

WAAS CH 77799 W32A	APP CRS 324°	Rwy Ldg 13492 TDZE 1167 Apt Elev 1189
--	------------------------	--

RNAV (GPS) Y RWY 32R

GRANT COUNTY INTL (MWH)

RNP APCH-GPS.

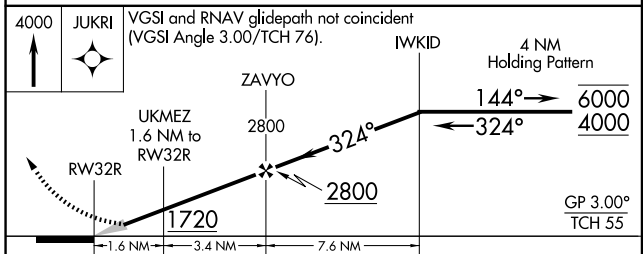
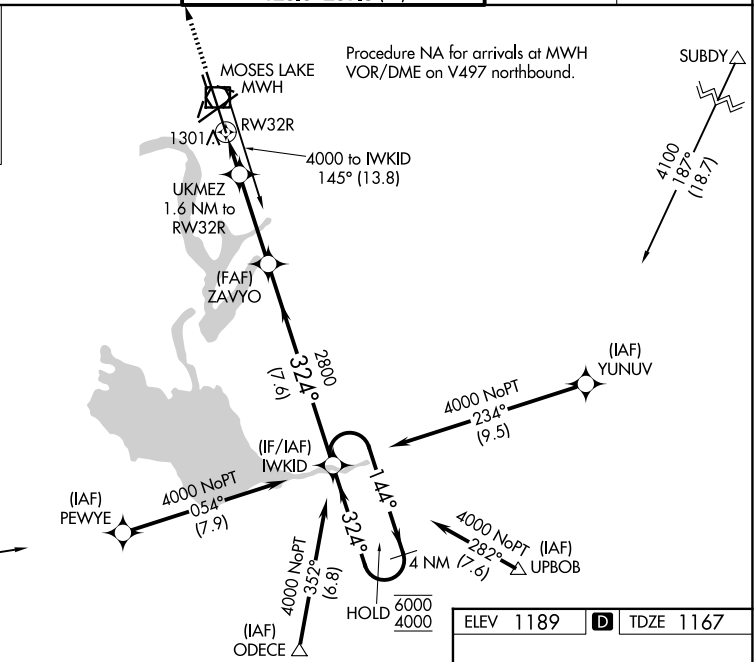
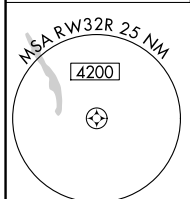
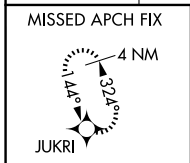
⚠ For uncompensated Baro-VNAV systems, LNAV/VNAV NA below -15°C or above 54°C. Circling Rwy 9/27, 18/36 NA at night. For inop ALS increase LNAV/VNAV all Cats visibility to RVR 5500, increase LNAV Cat C and D visibility to 1/2 SM.
*RVR 1800 authorized with use of FD or AP or HUD to DA (NA when using Ephrata altimeter setting).

MALSR

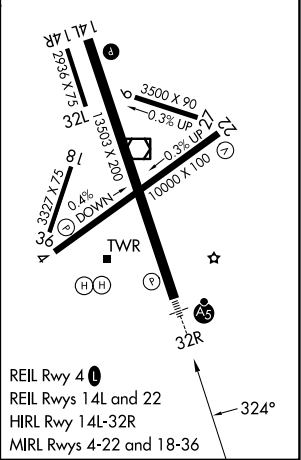


MISSED APPROACH: Climb to 4000 direct JUKRI and hold.

ATIS 119.05	GRANT COUNTY APP CON * 126.4 379.95	GRANT COUNTY TOWER * 118.25 (CTAF) 0 257.8 (E) 128.0 257.8 (W)	GND CON 121.9	UNICOM 122.95
-----------------------	---	--	-------------------------	-------------------------



ELEV 1189	D TDZE 1167
-----------	--------------------



CATEGORY	A	B	C	D
LPV DA*		1367/24	200 (200-1/2)	
LNAV/VNAV DA		1540/35	373 (400-3/4)	
LNAV MDA	1620/24	453 (500-1/2)	1620/45	453 (500-3/4)
CIRCLING	1660-1	471 (500-1)	1680-1 1/2 491 (500-1 1/2)	1820-2 631 (700-2)

NW-1, 16 APR 2026 to 14 MAY 2026

NW-1, 16 APR 2026 to 14 MAY 2026