

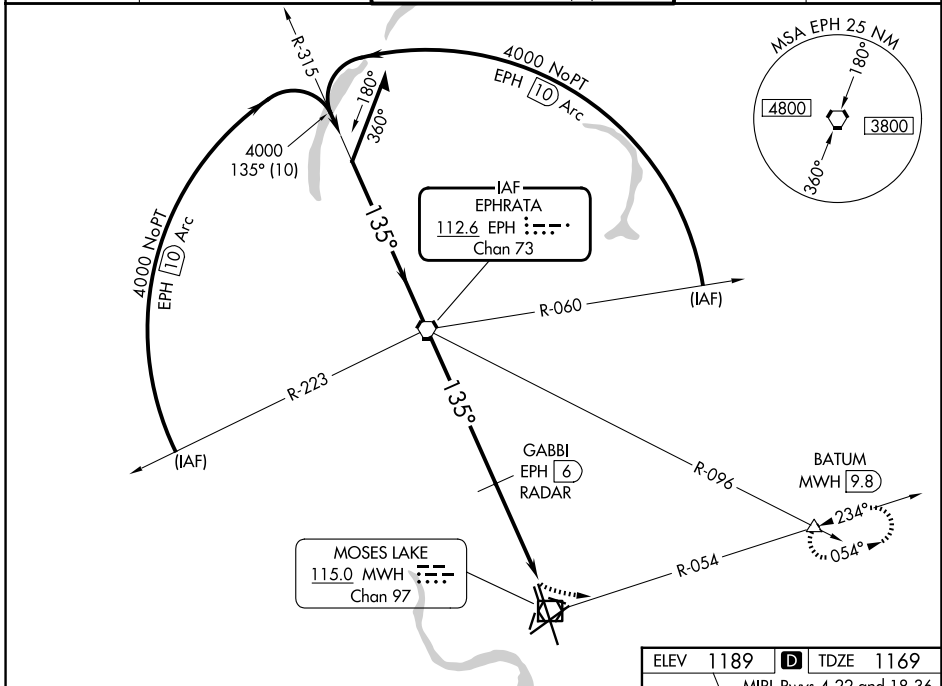
VORTAC EPH <b>112.6</b> Chan <b>73</b>	APP CRS <b>135°</b>	Rwy Ldg <b>13503</b> TDZE <b>1169</b> Apt Elev <b>1189</b>
--	------------------------	--

# VOR-1 RWY 14L

GRANT COUNTY INTL (MWH)

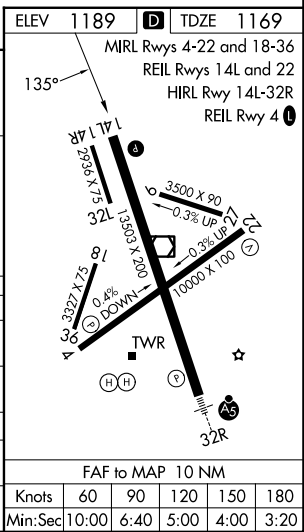
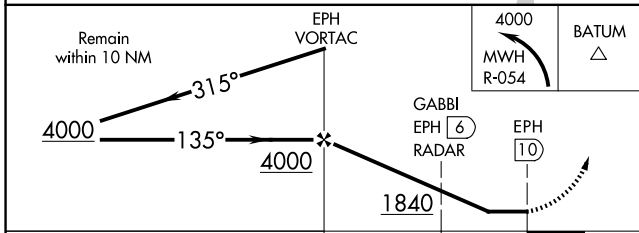
**⚠** MISSED APPROACH: Climbing left turn to 4000 via MWH R-054 to BATUM INT/MWH 9.8 DME and hold.

ATIS <b>119.05</b>	GRANT COUNTY APP CON * <b>126.4 379.95</b>	GRANT COUNTY TOWER * <b>118.25</b> (CTAF) <b>257.8</b> (E) <b>128.0 257.8</b> (W)	GND CON <b>121.9</b>	UNICOM <b>122.95</b>
-----------------------	---	---	-------------------------	-------------------------



NW-1, 16 APR 2026 to 14 MAY 2026

NW-1, 16 APR 2026 to 14 MAY 2026



CATEGORY	A	B	C	D
S-14L	1840-1 671 (700-1)		1840-2 671 (700-2)	1840-2 1/4 671 (700-2 1/4)
CIRCLING	1840-1 651 (700-1)		651 (700-2)	651 (700-2 1/4)
GABBI DME or RADAR MINIMUMS				
S-14L	1640-1 471 (500-1)		1640-1 1/4 471 (500-1 1/4)	1640-1 1/2 471 (500-1 1/2)
CIRCLING	1680-1 491 (500-1)		1680-1 1/2 491 (500-1 1/2)	1820-2 631 (700-2)