

VOR/DME MWH 115.0 Chan 97	APP CRS 231°	Rwy Ldg 10000 TDZE 1166 Apt Elev 1189
---	------------------------	--

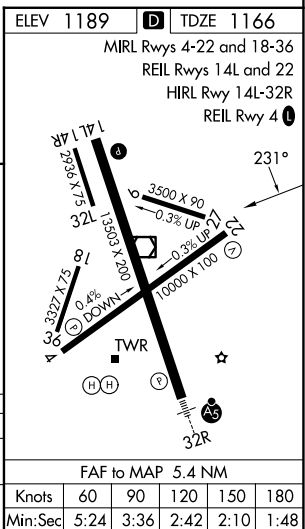
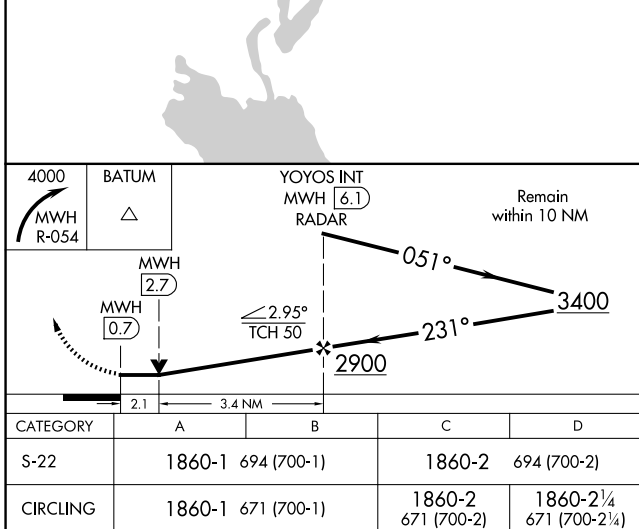
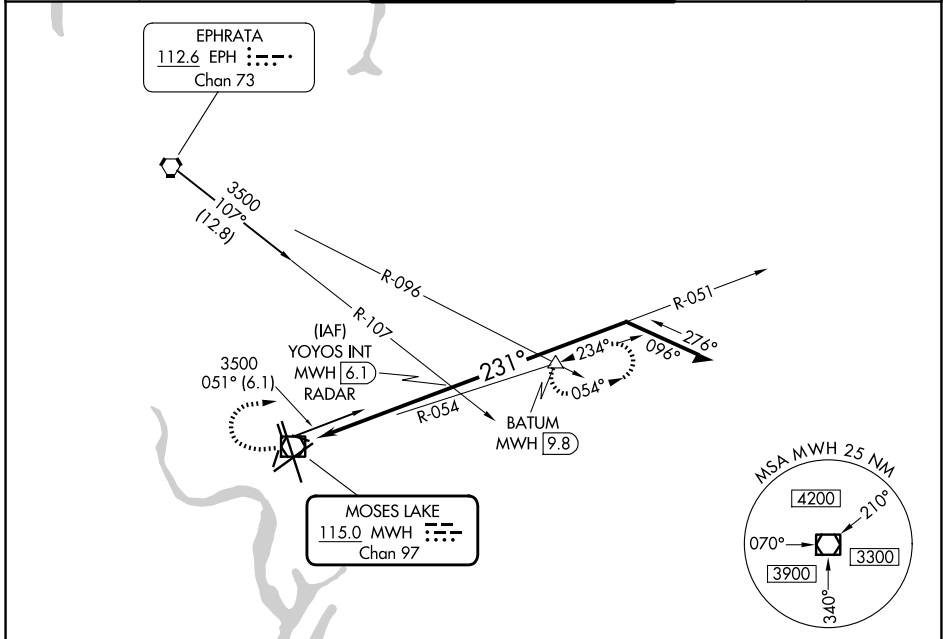
VOR RWY 22

GRANT COUNTY INTL (MWH)

⚠ Circling Rwy 9, 27, 18, 36 NA at night. VDP NA when using EPH altimeter setting. When local altimeter setting not received, use EPH altimeter setting and increase all MDAs 40 feet.

⚠ MISSED APPROACH: Climbing right turn to 4000 on MWH VOR/DME R-054 to BATUM INT/9.8 DME and hold, continue climb-in-hold to 4000.

ATIS 119.05	GRANT COUNTY APP CON * 126.4 379.95	GRANT COUNTY TOWER * 118.25 (CTAF) 0 257.8 (E) 128.0 257.8 (W)	GND CON 121.9	UNICOM 122.95
-----------------------	---	---	-------------------------	-------------------------



NW-1, 16 APR 2026 to 14 MAY 2026

NW-1, 16 APR 2026 to 14 MAY 2026