

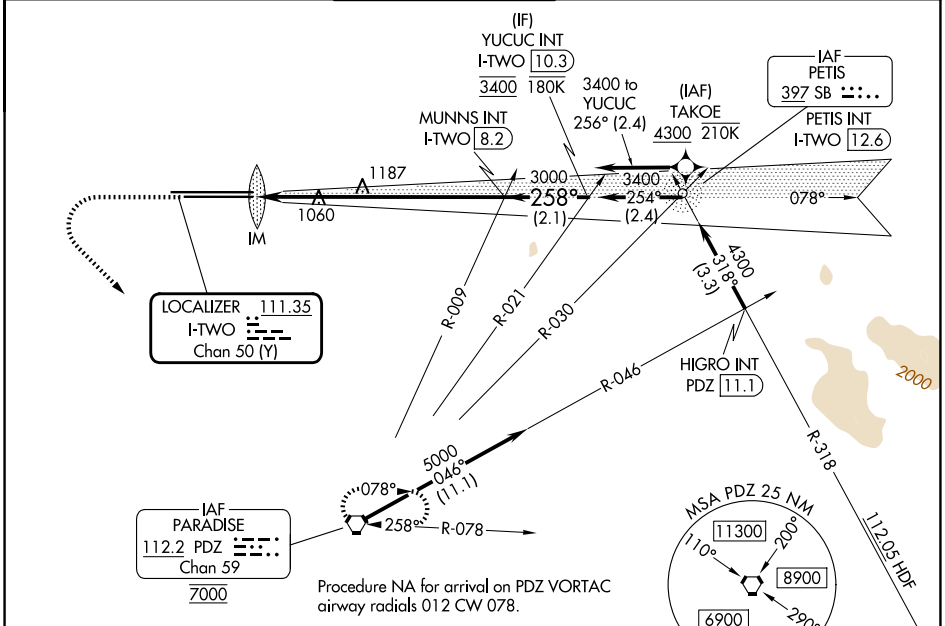
LOC/DME I-TWO 111.35 Chan 50(Y)	APP CRS 258°	Rwy Ldg TDZE 926 Apt Elev 944	10200
--	------------------------	--	--------------

ILS RWY 26L (CAT II & III)

ONTARIO INTL (ONT)

RNP APCH - GPS. From TAKOE.	ALSIF-2 	MISSED APPROACH: Climb to 2800 then climbing left turn to 5400 direct PDZ VORTAC and hold, continue climb-in-hold to 5400.
-----------------------------	-------------	--

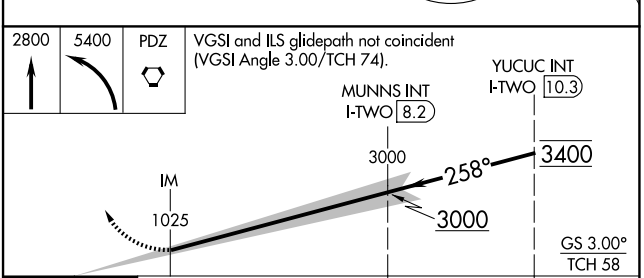
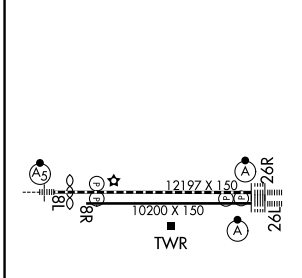
D-ATIS 124.25	SOCAL APP CON 127.0 318.2	ONTARIO TOWER 120.6 360.775	GND CON 121.9 257.8	CLNC DEL 132.9	CPDLC
-------------------------	-------------------------------------	---------------------------------------	-------------------------------	--------------------------	-------



SW-3, 16 APR 2026 to 14 MAY 2026

SW-3, 16 APR 2026 to 14 MAY 2026

ELEV 944	D	TDZE 926
----------	----------	----------



2800	5400	PDZ	VGSi and ILS glidepath not coincident (VGSi Angle 3.00/TCH 74).	YUCUC INT I-TWO 10.3
				MUNNS INT I-TWO 8.2
				3000
				258°
				3400
				GS 3.00° TCH 58
				11.63'
				6.3 NM
				2.1 NM
CATEGORY	A	B	C	D
S-ILS 26L	CAT II RA 103/12 100 DA 1026			
S-ILS 26L	CAT III RVR 06			

TDZ/CL Rwy 8L, 26L and 26R
HIRL Rwy 8L-26R and 8R-26L

CATEGORY II & III ILS - SPECIAL AIRCREW & AIRCRAFT CERTIFICATION REQUIRED