

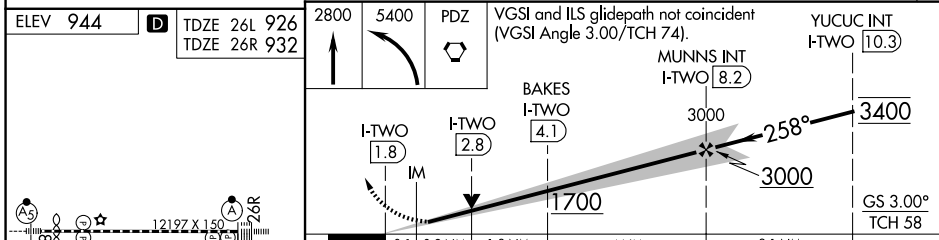
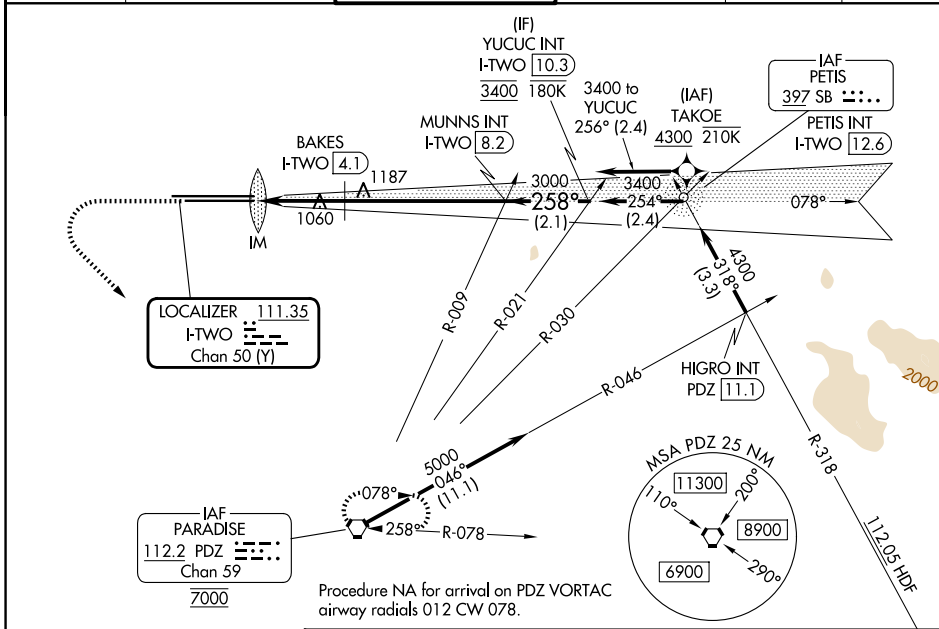
LOC/DME I-TWO 111.35 Chan 50 (Y)	APP CRS 258°	Rwy Ldg 10200 26L	26R 12197
		TDZE 926	932
		Apt Elev 944	944

ILS or LOC RWY 26L

ONTARIO INTL (ONT)

RNP APCH - GPS. From TAKOE.	ALSF-2 Rwy 26L	ALSF-2 Rwy 26R	MISSED APPROACH: Climb to 2800 then climbing left turn to 5400 direct PDZ VORTAC and hold, continue climb-in-hold to 5400.
Circling NA north of Rwy 8L-26R. For inop ALS, increase S-LOC 26L Cat C and D visibility to 2½ SM.			

D-ATIS 124.25	SOCAL APP CON 127.0 318.2	ONTARIO TOWER 120.6 360.775	GND CON 121.9 257.8	CLNC DEL 132.9	CPDLC
-------------------------	-------------------------------------	---------------------------------------	-------------------------------	--------------------------	-------



ELEV 944	D	TDZE 26L 926 TDZE 26R 932	2800	5400	PDZ	VGSI and ILS glidepath not coincident (VGSI Angle 3.00/TCH 74).	YUCUC INT I-TWO 10.3												
TDZ/CL Rwy 8L, 26L and 26R HIRL Rwy 8L-26R and 8R-26L		FAF to MAP 6.3 NM																	
<table border="1"> <tr> <th>Knots</th> <td>60</td> <td>90</td> <td>120</td> <td>150</td> <td>180</td> </tr> <tr> <th>Min:Sec</th> <td>6:18</td> <td>4:12</td> <td>3:09</td> <td>2:31</td> <td>2:06</td> </tr> </table>		Knots	60	90	120	150	180	Min:Sec	6:18	4:12	3:09	2:31	2:06	BAKES FIX MINIMUMS (DME REQUIRED)					
Knots	60	90	120	150	180														
Min:Sec	6:18	4:12	3:09	2:31	2:06														
S-LOC 26L		1320/24		394 (400-½)		1320/35 394 (400-¾)													

SW-3, 16 APR 2026 to 14 MAY 2026

SW-3, 16 APR 2026 to 14 MAY 2026