

RNAV (RNP) Z RWY 26L

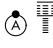
ONTARIO INTL (ONT)

APP CRS	Rwy Ldg	10200
258°	TDZE	926
	Apt Elev	944

RNP AR APCH - GPS.

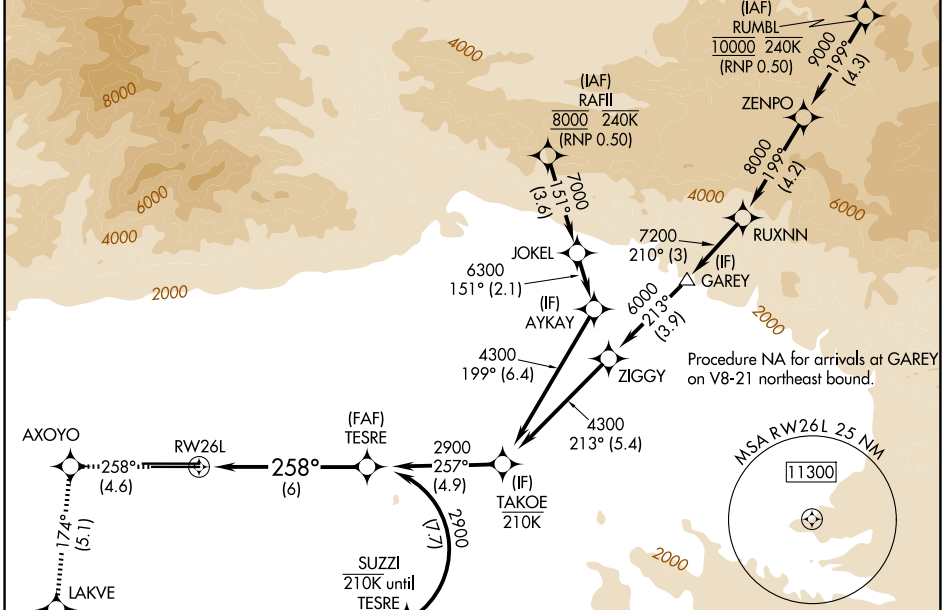
▼ For uncompensated Baro-VNAV systems, procedure NA below 1°C or above 54°C. For inop ALS, increase RNP 0.10 visibility all Cats to RVR 4500, RNP 0.17 visibility all Cats to RVR 5000, RNP 0.30 visibility all Cats to RVR 6000.

ALSF-2



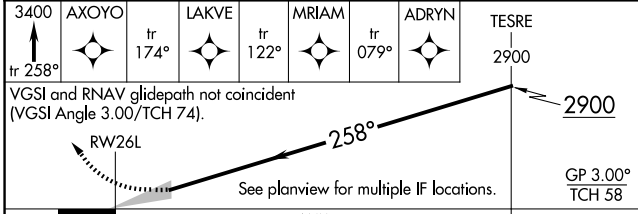
MISSED APPROACH: Climb to 3400 on track 258° to AXOYO and track 174° to LAKVE and track 122° to MRIAM and track 079° to ADRYN and hold.

D-ATIS	SOCAL APP CON	ONTARIO TOWER	GND CON	CLNC DEL	CPDLC
124.25	127.0 318.2	120.6 360.775	121.9 257.8	132.9	

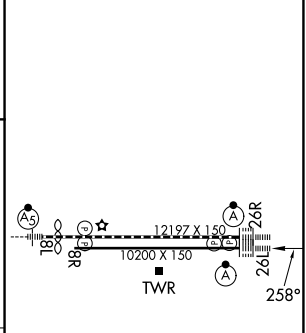


Procedure NA for arrivals at GAREY on V8-21 northeast bound.

Procedure NA for arrival on PDZ VORTAC airway radials 012 CW 078.



ELEV 944	D TDZE 926
----------	-------------------



CATEGORY	A	B	C	D
RNP 0.10 DA		1203/24	277 (300-½)	
RNP 0.17 DA		1245/24	319 (400-½)	
RNP 0.30 DA		1322/35	396 (400-¾)	

AUTHORIZATION REQUIRED

TDZ/CL Rwy's 8L, 26R and 26L

HIRL Rwy's 8L-26R and 8R-26L

SW-3, 16 APR 2026 to 14 MAY 2026

SW-3, 16 APR 2026 to 14 MAY 2026