

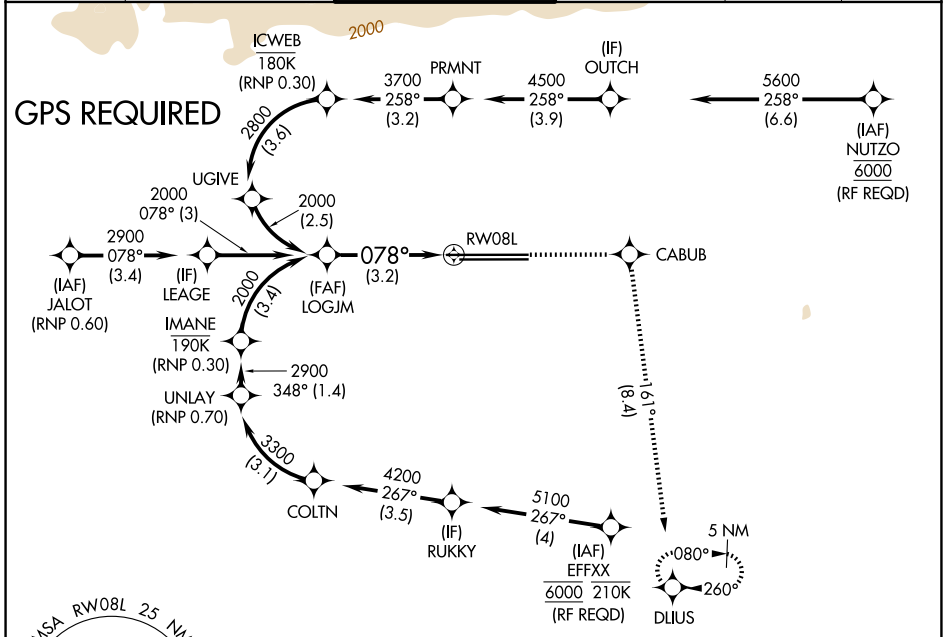
APP CRS	Rwy Ldg	<b>11200</b>
<b>078°</b>	TDZE	<b>944</b>
	Apt Elev	<b>944</b>

# RNAV (RNP) Z RWY 8L

ONTARIO INTL (ONT)

	For uncompensated Baro-VNAV systems, procedure NA below 2°C (36°F) or above 54°C (130°F).		MISSED APPROACH: Climb to 5300 direct CABUB on track 161° to DLIUS and hold, continue climb-in-hold to 5300.

D-ATIS <b>124.25</b>	SOCAL APP CON <b>127.0 318.2</b>	ONTARIO TOWER <b>120.6 360.775</b>	GND CON <b>121.9 257.8</b>	CLNC DEL <b>132.9</b>	CPDLC
-------------------------	-------------------------------------	---------------------------------------	-------------------------------	--------------------------	-------

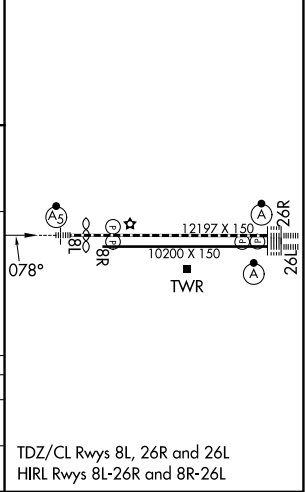


SW-3, 16 APR 2026 to 14 MAY 2026

SW-3, 16 APR 2026 to 14 MAY 2026

ELEV 944	TDZE 944
----------	----------

VGSi and RNAV glidepath not coincident (VGSi Angle 3.00/TCH 62). LOGJM 2000 → 078° → RWY 8L GP 3.00° TCH 45 See planview for multiple IF locations. 3.2 NM		5300 CABUB ↑ tr 161° DLIUS		
CATEGORY	A	B	C	D
RNP 0.30 DA	1490-13 <sup>3</sup> / <sub>8</sub>		546 (600-13 <sup>3</sup> / <sub>8</sub> )	
<b>AUTHORIZATION REQUIRED</b>				



TDZ/CL Rwy 8L, 26R and 26L  
HIRL Rwy 8L-26R and 8R-26L