

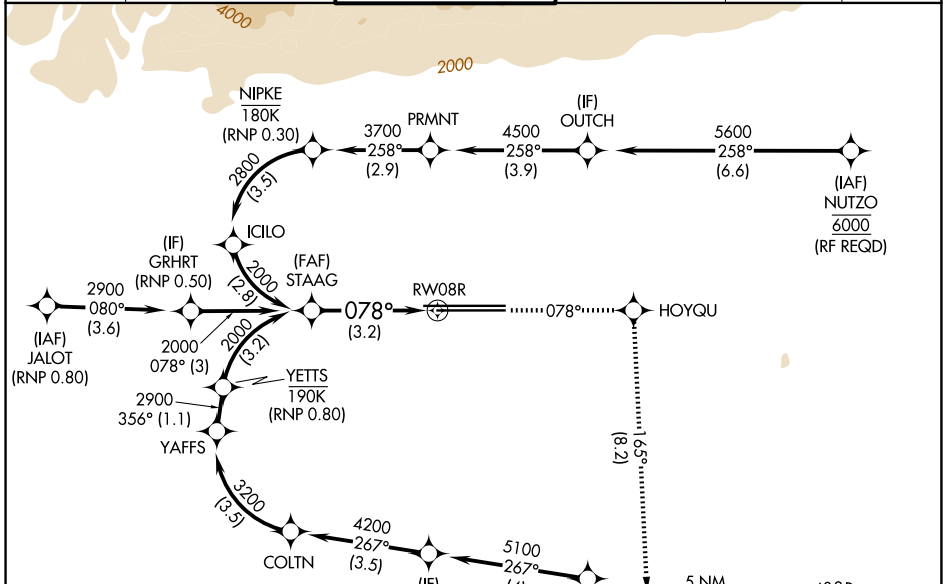
APP CRS	Rwy Ldg	<b>10200</b>
<b>078°</b>	TDZE	<b>936</b>
	Apt Elev	<b>944</b>

# RNAV (RNP) Z RWY 8R

ONTARIO INTL (ONT)

	For uncompensated Baro-VNAV systems, procedure NA below 2°C (36°F) or above 54°C (130°F).	MISSED APPROACH: Climb to 5300 on track 078° to HOYQU and on track 165° to DLIUS and hold, continue climb-in-hold to 5300.

D-ATIS <b>124.25</b>	SOCAL APP CON <b>127.0 318.2</b>	ONTARIO TOWER <b>120.6 360.775</b>	GND CON <b>121.9 257.8</b>	CLNC DEL <b>132.9</b>	CPDLC
-------------------------	-------------------------------------	---------------------------------------	-------------------------------	--------------------------	-------

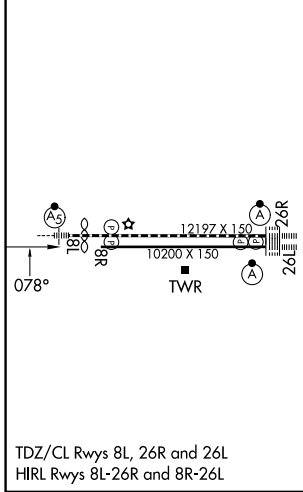


SW-3, 16 APR 2026 to 14 MAY 2026

SW-3, 16 APR 2026 to 14 MAY 2026

## GPS REQUIRED

ELEV	<b>944</b>	<b>D</b>	TDZE	<b>936</b>
------	------------	----------	------	------------

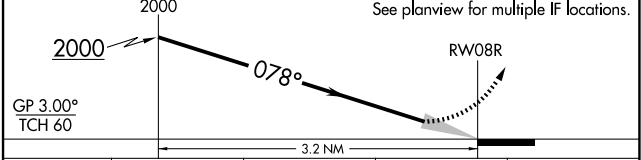


TDZ/CL Rwy 8L, 26R and 26L  
HIRL Rwy 8L-26R and 8R-26L

VGSI and RNAV glidepath not coincident (VGSI Angle 3.00/TCH 65).

5300	HOYQU	tr 165°	DLIUS
tr 078°			

See planview for multiple IF locations.



CATEGORY	A	B	C	D
RNP 0.30 DA		1342-1½	406 (400-1½)	

## AUTHORIZATION REQUIRED