

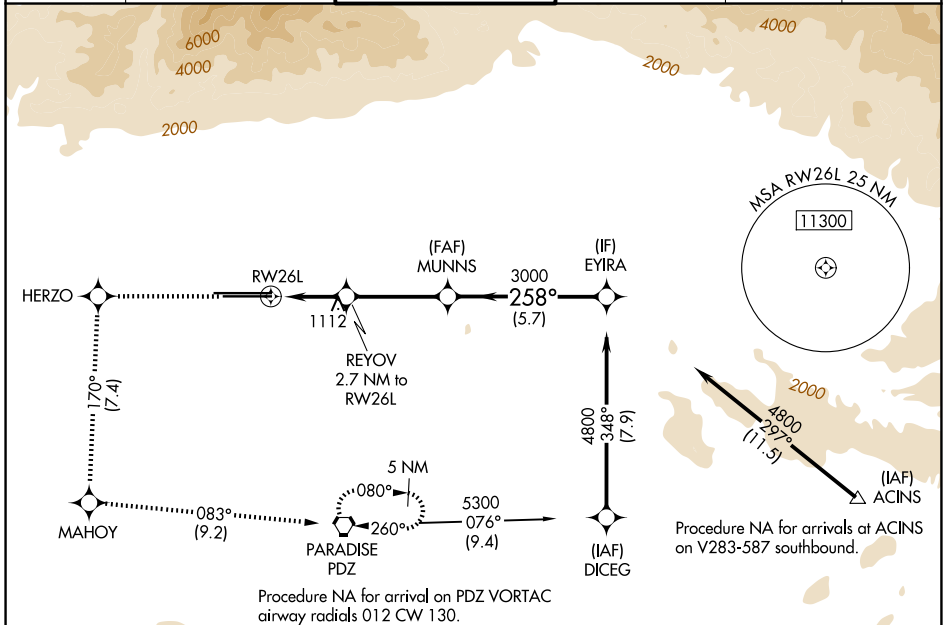
WAAS CH 90407 W26B	APP CRS 258°	Rwy Ldg TDZE 926 Apt Elev 944
--	------------------------	---

RNAV (GPS) Y RWY 26L

ONTARIO INTL (ONT)

RNP APCH - GPS.	ALSF-2	MISSED APPROACH: Climb to 4700 direct HERZO and on track 170° to MAHOY and on track 083° to PDZ VORTAC, continue climb in hold to 4700.
-----------------	--------	---

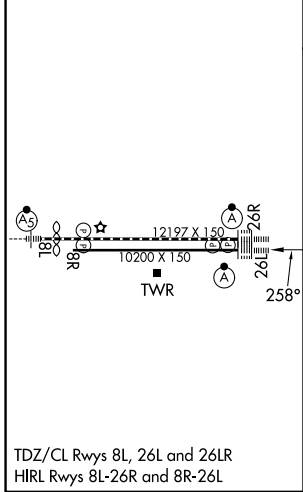
D-ATIS 124.25	SOCAL APP CON 127.0 318.2	ONTARIO TOWER 120.6 360.775	GND CON 121.9 257.8	CLNC DEL 132.9	CPDLC
-------------------------	-------------------------------------	---------------------------------------	-------------------------------	--------------------------	-------



SW-3, 16 APR 2026 to 14 MAY 2026

SW-3, 16 APR 2026 to 14 MAY 2026

ELEV 944	D	TDZE 926
----------	----------	----------



4700	HERZO	MAHOY	PDZ	VGS1 and RNAV glidepath not coincident (VGS1 Angle 3.00/TCH 74).	
↑	tr 170°	tr 083°		MUNNS	EYIRA
	REYOV 2.7 NM to RWY 26L	REYOV 2.7 NM to RWY 26L		3000	4800
	1.2 NM to RWY 26L	1.5 NM	3.6 NM	1840	GP 3.00° TCH 58
CATEGORY	A	B	C	D	
LPV DA		1126/18	200 (200-½)		
LNAV/VNAV DA		1267/30	341 (400-⅙)		
LNAV MDA	1380/24	454 (500-½)	1380/45	454 (500-⅔)	
CIRCLING	1400-1	456 (500-1)	1500-1½	1540-2	556 (600-1½) 596 (600-2)