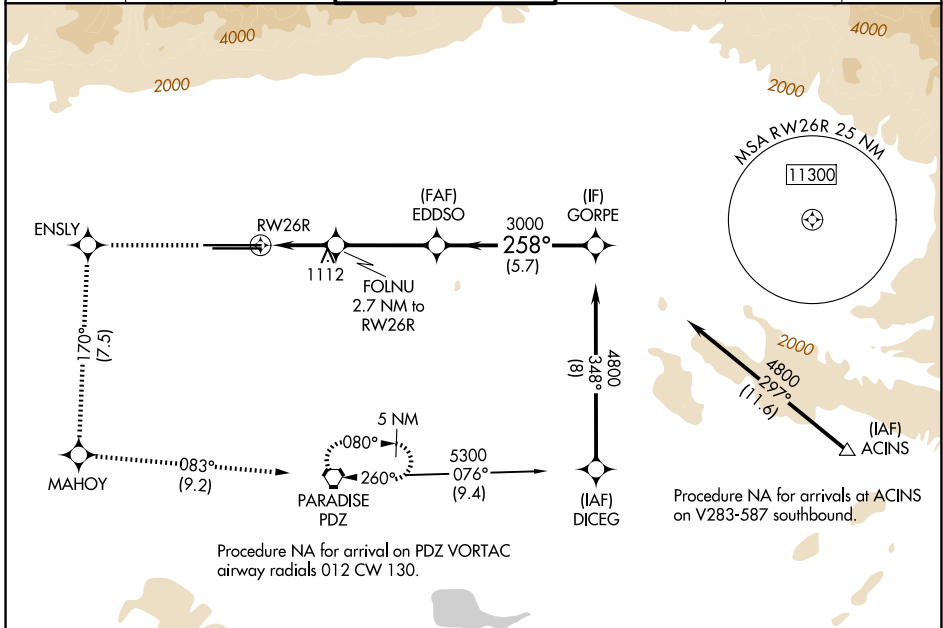


WAAS CH 53406 W26A	APP CRS 258°	Rwy Ldg 12197 TDZE 932 Apt Elev 944
--	------------------------	--

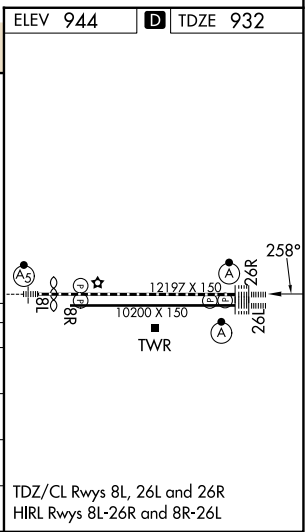
RNAV (GPS) Y RWY 26R

ONTARIO INTL (ONT)

RNP APCH - GPS.		ALSIF-2		MISSED APPROACH: Climb to 4700 direct ENSLY and on track 170° to MAHOY and on track 083° to PDZ VORTAC and hold, continue climb-in-hold to 4700.		
▼ Circling NA north of Rwy 8L-26R. For uncompensated Baro-VNAV systems, procedure NA below 2°C or above 54°C.						
D-ATIS 124.25	SOCAL APP CON 127.0 318.2	ONTARIO TOWER 120.6 360.775		GND CON 121.9 257.8	CLNC DEL 132.9	CPDLC



ELEV 944	D TDZE 932
4700	↑
ENSLY	tr 170°
MAHOY	tr 083°
PDZ	
VGSI and RNAV glidepath not coincident (VGSI Angle 3.00/TCH 75).	
EDDSO	GORPE
3000	4800
FOLNU 2.7 NM to RWY 26R	258°
1.2 NM to RWY 26R	3000
1840	GP 3.00° TCH 60
1.2 NM	1.5 NM
3.6 NM	5.7 NM
CATEGORY	A B C D
LPV DA	1132/18 200 (200-½)
LNAV/VNAV DA	1267/55 335 (400-1)
LNAV MDA	1380/24 448 (500-½) 1380/45 448 (500-¾)
CIRCLING	1400-1 456 (500-1) 1500-1½ 556 (600-1½) 1540-2 596 (600-2)



SW-3, 16 APR 2026 to 14 MAY 2026

SW-3, 16 APR 2026 to 14 MAY 2026