

LOC/DME I-RUT 111.7 Chan 54	APP CRS 194°	Rwy Ldg 5004 TDZE 787 Apt Elev 787
---	------------------------	---

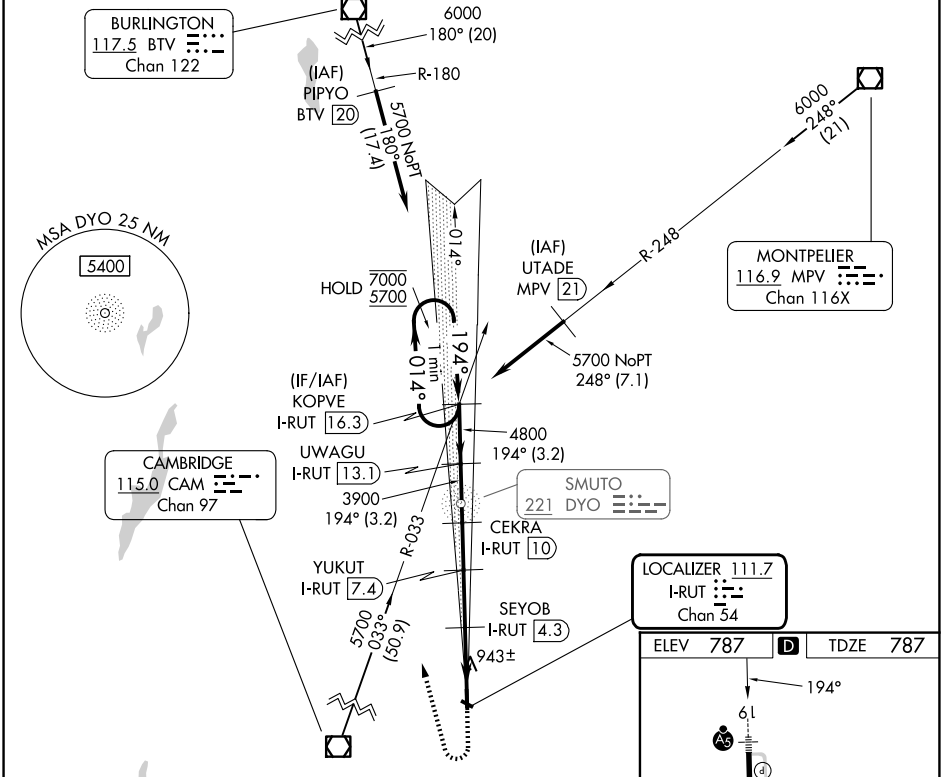
ILS Z or LOC Z RWY 19

RUTLAND/SOUTHERN VERMONT RGNL (RUT)

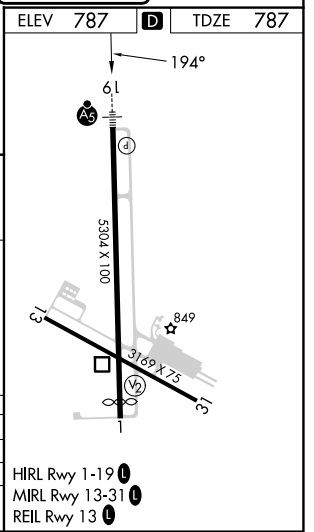
DME required.

MALS R MISSED APPROACH: Climb to 1900 then climbing right turn to 5700 on heading 360° and CAM VOR/DME R-033 to KOPVE/I-RUT 16.3 DME and hold. If unable to meet climb gradient, see ILS Y or LOC Y Rwy 19. # Missed approach requires minimum climb of 425 feet per NM to 3200.

AWOS-3PT 118.375	BOSTON CENTER 135.7 282.2	UNICOM 122.8 (CTAF)
----------------------------	-------------------------------------	-------------------------------



One Minute Holding Pattern	1900	5700	CAM R-033	KOPVE I-RUT 16.3
KOPVE I-RUT 16.3	UWAGU I-RUT 13.1	CEKRA I-RUT 10	YUKUT I-RUT 7.4	SEYOB I-RUT 4.3
7000 ← 014°	5700 → 194°	4800 → 194°	3900 → 194°	3040 → 194°
GS 3.20°	TCH 54	3900	*1980	*1980
	3.2 NM	3.2 NM	2.5 NM	3.1 NM
CATEGORY	A	B	C	D
S-ILS 19 #	1451-1½ 664 (700-1½)			
S-LOC 19 #	1520-½ 733 (800-½)	1520-1½ 733 (800-1½)	2520-3 1733 (1800-3)	2760-3 1973 (2000-3)
CIRCLING	2160-1¼ 1373 (1400-1¼)	2160-1½ 1373 (1400-1½)	2520-3 1733 (1800-3)	2760-3 1973 (2000-3)



NE-1, 16 APR 2026 to 14 MAY 2026

NE-1, 16 APR 2026 to 14 MAY 2026