

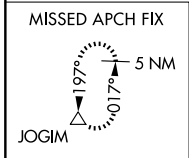
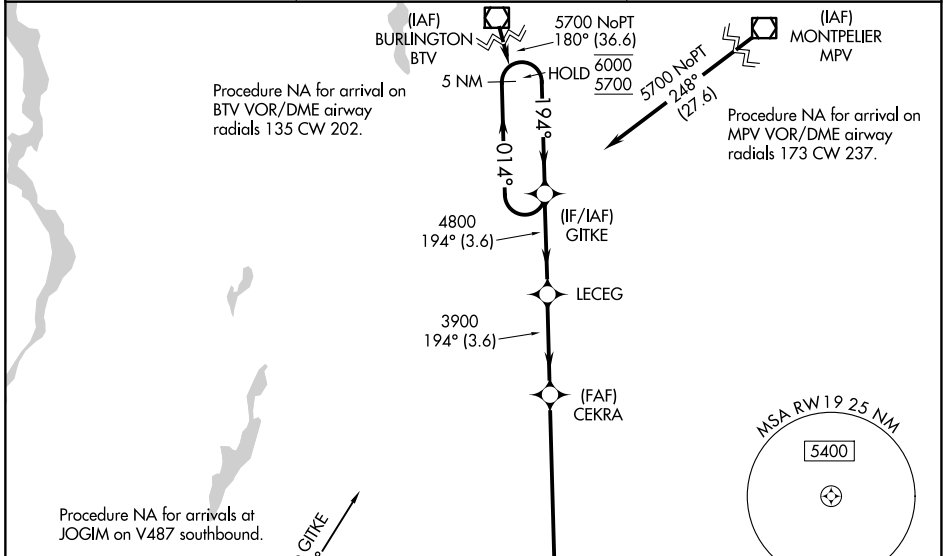
WAAS CH <b>65830</b> <b>W19A</b>	APP CRS <b>194°</b>	Rwy Ldg TDZE <b>787</b> Apt Elev <b>787</b>	<b>5004</b>
--	------------------------	---	-------------

# RNAV (GPS) Y RWY 19

RUTLAND/SOUTHERN VERMONT RGNL (RUT)

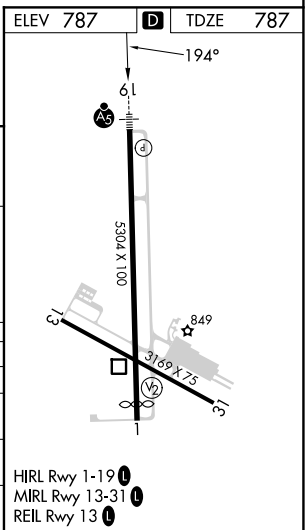
RNP APCH - GPS. <p>Circling NA northeast of Rwy 19 and 31. Circling Rwy 13, 31 NA at night. Inop table does not apply to LPV, LNAV/VNAV, LNAV all Cats. Inop table does not apply when using VSF altimeter setting to LPV, LNAV/VNAV, LNAV all Cats. Baro-VNAV NA. VDP NA when using VSF altimeter setting. When local altimeter setting not received, use VSF altimeter setting and increase LPV DA to 2350 feet and all visibilities 1 SM; increase LNAV/VNAV DA to 2303 feet; increase all MDAs 80 feet.</p>	MALSR 	MISSED APPROACH: Climb to 2700, then climbing right turn to 5700 direct JOGIM and hold, continue climb-in-hold to 5700.
--	-----------	---

AWOS-3PT <b>118.375</b>	BOSTON CENTER <b>135.7 282.2</b>	UNICOM <b>122.8 (CTAF) 0</b>
----------------------------	-------------------------------------	---------------------------------



GP 3.20° TCH 54	3.6 NM	3.6 NM	4 NM	5 NM
--------------------	--------	--------	------	------

CATEGORY	A	B	C	D
LPV DA	2270-5	1483 (1500-5)		NA
LNAV/VNAV DA	2223-5	1436 (1500-5)		NA
LNAV MDA	2560-1¼ 1773 (1800-1¼)	2560-1½ 1773 (1800-1½)	2560-3 1773 (1800-3)	NA
CIRCLING	2560-1¼ 1773 (1800-1¼)	2560-1½ 1773 (1800-1½)	2560-3 1773 (1800-3)	NA



NE-1, 16 APR 2026 to 14 MAY 2026

NE-1, 16 APR 2026 to 14 MAY 2026