

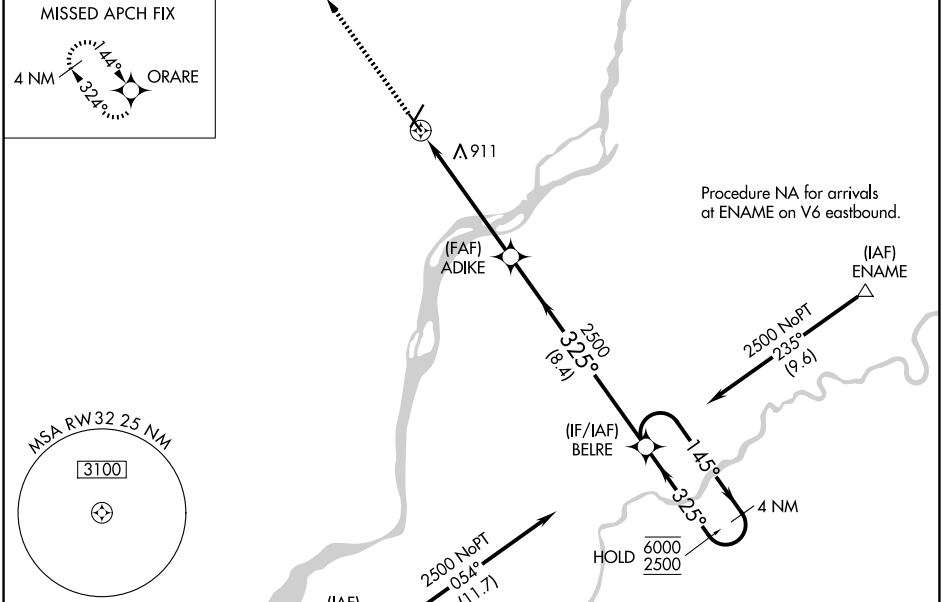
WAAS CH 77629 W32A	APP CRS 325°	Rwy Ldg TDZE Apt Elev	4200 697 708
--	------------------------	-----------------------------	---

RNAV (GPS) RWY 32

CLINTON MUNI (CWI)

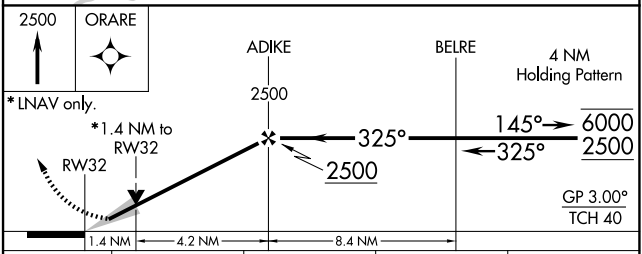
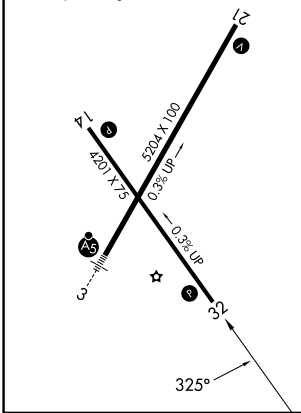
RNP APCH.	MISSED APPROACH: Climb to 2500 direct ORARE and hold.
 <p>For uncompensated Baro-VNAV systems, LNAV/VNAV NA below -16°C or above 54°C.</p>	

AWOS-3PT 125.525	QUAD CITY APP CON ★ 125.95 257.8	UNICOM 123.075 (CTAF) 0
----------------------------	--	-----------------------------------



ELEV 708	D	TDZE 697
----------	----------	----------

REIL Rwy 14 and 21 **0**
MIRL Rwy 14-32 **0**
HIRL Rwy 3-21 **0**



CATEGORY	A	B	C	D
LPV DA	947-1	250 (300-1)		NA
LNAV/VNAV DA	1205-1 ³ / ₈	508 (500-1 ³ / ₈)		NA
LNAV MDA	1180-1	483 (500-1)	1180-1 ³ / ₈ 483 (500-1 ³ / ₈)	NA
CIRCLING	1180-1 472 (500-1)	1240-1 532 (600-1)	1240-1 ¹ / ₂ 532 (600-1 ¹ / ₂)	NA

NC-3, 16 APR 2026 to 14 MAY 2026

NC-3, 16 APR 2026 to 14 MAY 2026