


LOC I-GNV <b>111.3</b>	APP CRS <b>286°</b>	Rwy Ldg TDZE <b>122</b> Apt Elev <b>151</b>
---------------------------	------------------------	---

# ILS or LOC RWY 29

GAINESVILLE RGNL (GNV)

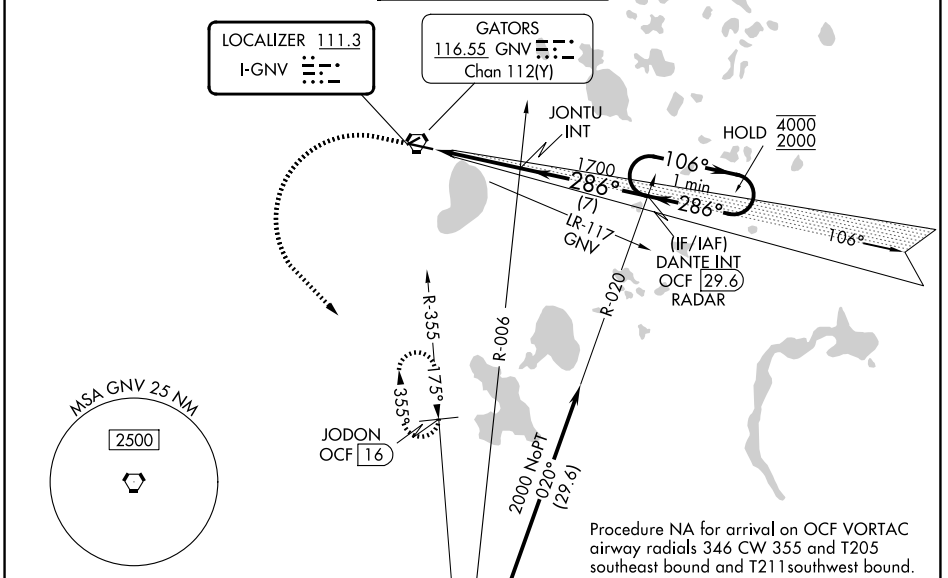
DME required. RADAR required for procedure entry at DANTE.

⚠ When local altimeter setting not received, use OCF altimeter setting and increase S-ILS 29 DA to 403 feet; increase all MDAs 100 feet and S-LOC 29 visibility Cat C/D to RVR 6000, and Circling visibility Cat C/D ½ SM. For inop ALS when using OCF altimeter setting, increase S-ILS 29 all Cats visibility to RVR 4500. \* RVR 1800 authorized with use of FD or AP or HUD to DA (NA when using OCF altimeter setting.)

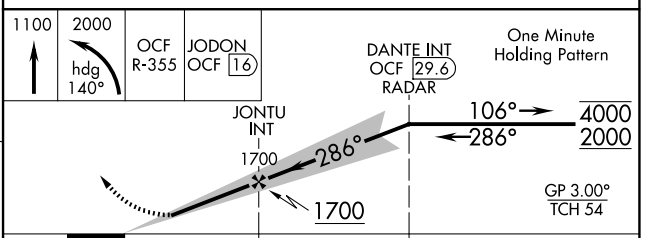
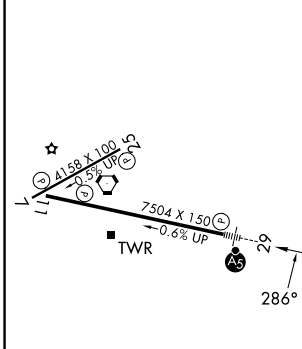
MALSR 

MISSED APPROACH: Climb to 1100 then climbing left turn to 2000 on heading 140° and OCF VORTAC R-355 to JODON/OCF 16 DME and hold.

ATIS <b>127.15</b>	JACKSONVILLE APP CON <b>118.175 338.25</b>	GAINESVILLE TOWER★ <b>119.55 (CTAF) 353.7</b>	GND CON <b>121.7</b>	UNICOM <b>122.95</b>
-----------------------	---	--	-------------------------	-------------------------



ELEV 151	TDZE 122
----------	----------



CATEGORY	A	B	C	D
S-ILS 29 *	322/24 200 (200-½)			
S-LOC 29	580/24 458 (500-½)	580/45 458 (500-¾)		
CIRCLING	620-1 469 (500-1)	700-1 549 (600-1)	760-1¾ 609 (700-1¾)	820-2 669 (700-2)

SE-3, 16 APR 2026 to 14 MAY 2026

SE-3, 16 APR 2026 to 14 MAY 2026