

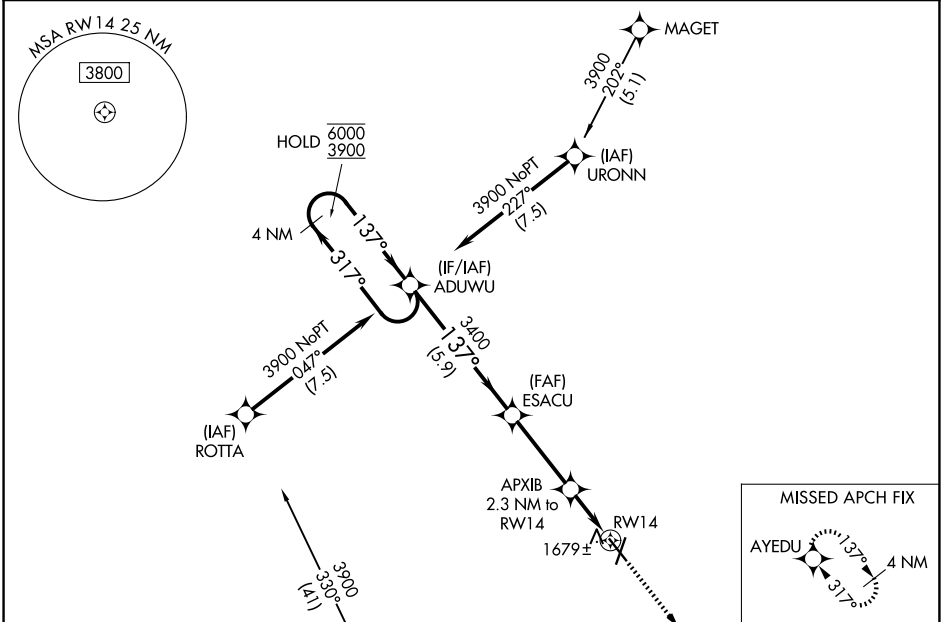
WAAS CH 62915 W14A	APP CRS 137°	Rwy Ldg TDZE Apt Elev	5160 1543 1573
--	------------------------	-----------------------------	---

RNAV (GPS) RWY 14

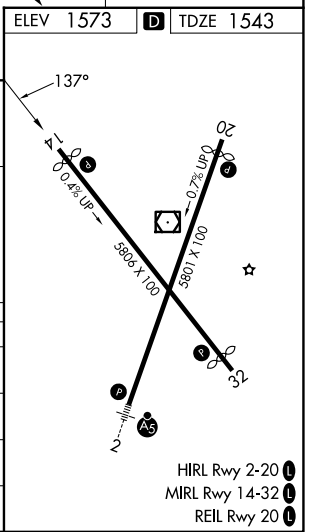
NORFOLK RGNL/KARL STEFAN MEML FLD (OFK)

RNP APCH - GPS.	MISSED APPROACH: Climb to 3900 direct AYEDU and hold.
▼ For uncompensated Baro-VNAV systems, LNAV/VNAV NA below -23°C or above 54°C.	

ASOS 119.025	MINNEAPOLIS CENTER 125.025 235.625	UNICOM 122.7 (CTAF) 0
------------------------	--	---------------------------------



4 NM Holding Pattern		ADUWU	ESACU	APXIB 2.3 NM to RW14	3900 AYEDU
6000 ← 317°	3900 → 137°	137°	3400	1.1 NM to RW14	↑
GP 3.00°	TCH 40	5.9 NM	3.4 NM	1.2 NM	1.1 NM
CATEGORY	A	B	C	D	
LPV DA		1808-1	265 (300-1)		
LNAV/VNAV DA		1860-1	317 (300-1)		
LNAV MDA	1940-1	397 (400-1)	1940-1½	397 (400-1½)	
CIRCLING	2060-1 487 (500-1)	2100-1 527 (600-1)	2260-2 687 (700-2)	2360-2½ 787 (800-2½)	



NC-2, 16 APR 2026 to 14 MAY 2026

NC-2, 16 APR 2026 to 14 MAY 2026