

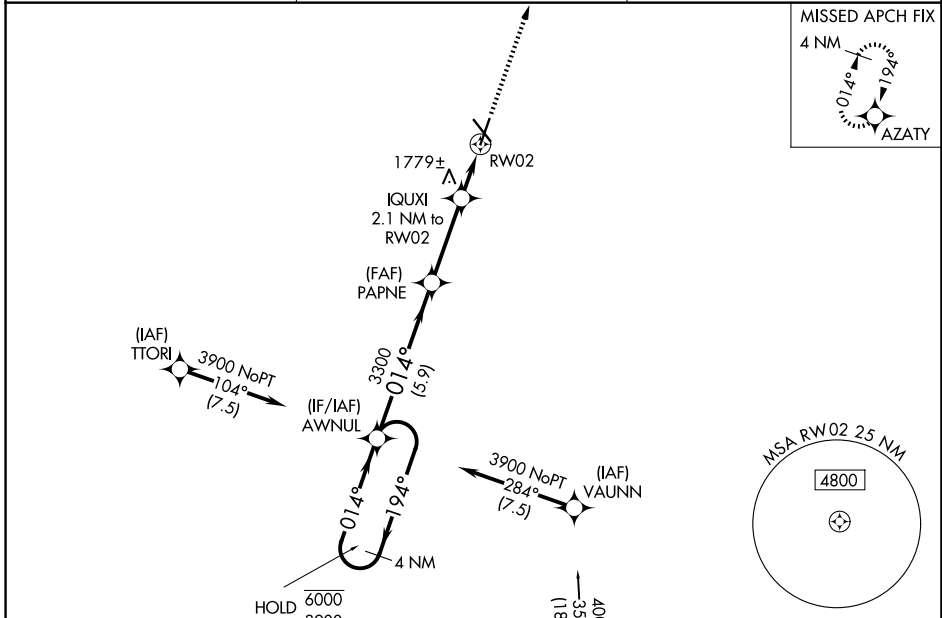
WAAS CH <b>50120</b> <b>W02A</b>	APP CRS <b>014°</b>	Rwy Ldg TDZE Apt Elev	<b>5801</b> <b>1573</b> <b>1573</b>
--	------------------------	-----------------------------	---

# RNAV (GPS) RWY 2

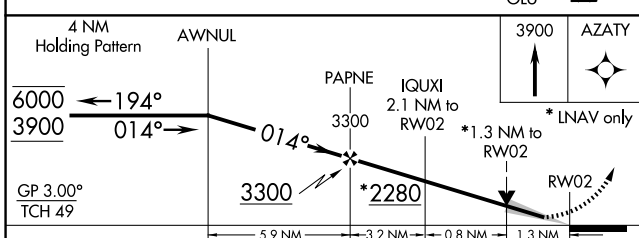
NORFOLK RGNL/KARL STEFAN MEML FLD (OFK)

RNP APCH.	MALSR	MISSED APPROACH: Climb to 3900 direct AZATY and hold.
<p>For uncorrected Baro-VNAV systems, LNAV/VNAV NA below -21°C or above 54°C.</p>		

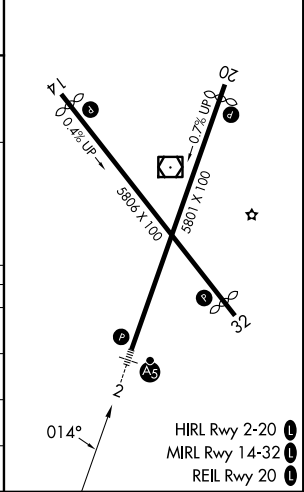
ASOS <b>119.025</b>	MINNEAPOLIS CENTER <b>125.025 235.625</b>	UNICOM <b>122.7 (CTAF) 0</b>
------------------------	--	---------------------------------



Procedure NA for arrivals at OLU VORTAC on V71 southeast bound.



ELEV 1573	TDZE 1573
-----------	-----------



CATEGORY	A	B	C	D
LPV DA		1773-½	200 (200-½)	
LNAV/VNAV DA		2038-1	465 (500-1)	
LNAV MDA	2040-½	467 (500-½)	2040-1	467 (500-1)
CIRCLING	2060-1 487 (500-1)	2100-1 527 (600-1)	2260-2 687 (700-2)	2360-2½ 787 (800-2½)

NC-2, 16 APR 2026 to 14 MAY 2026

NC-2, 16 APR 2026 to 14 MAY 2026