

WAAS CH <b>62820</b> <b>W05A</b>	APP CRS <b>049°</b>	Rwy Ldg <b>5000</b> TDZE <b>47</b> Apt Elev <b>53</b>
--	------------------------	---

# RNAV (GPS) RWY 5

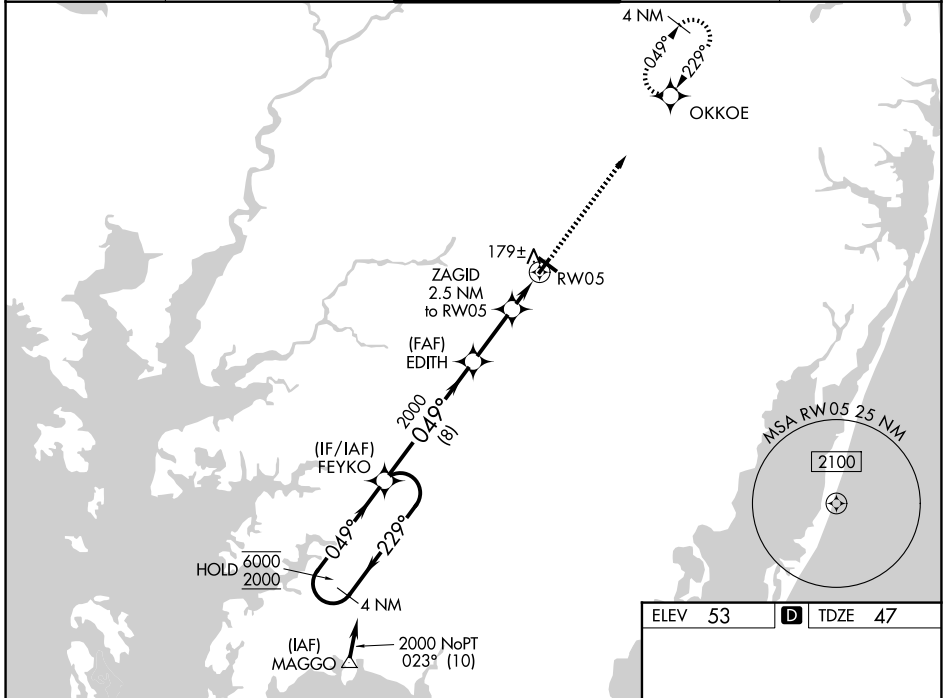
SALISBURY-OCEAN CITY WICOMICO RGNL (SBY)

RNP APCH - GPS.

**⚠** For uncompensated Baro-VNAV systems, LNAV/VNAV NA below -9°C or above 54°C. Rwy 5 helicopter visibility reduction below 3/4 SM NA.

MISSED APPROACH: Climb to 2000 direct OKKOE and hold.

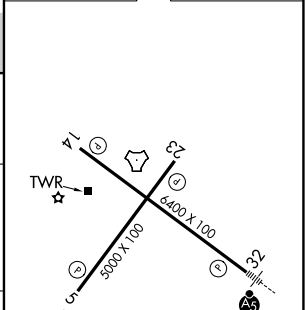
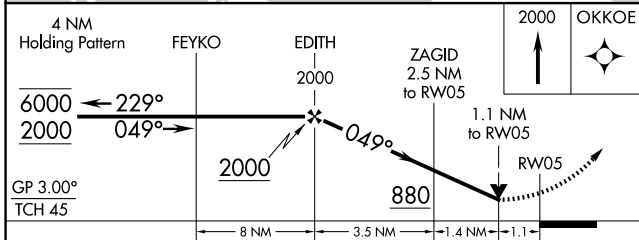
ASOS <b>118.325</b>	PATUXENT APP CON* <b>127.95 314.0</b>	SALISBURY TOWER* <b>119.425 (CTAF) 0</b>	GND CON <b>123.775</b>	UNICOM <b>122.95</b>
------------------------	--	---	---------------------------	-------------------------



NE-3, 16 APR 2026 to 14 MAY 2026

NE-3, 16 APR 2026 to 14 MAY 2026

ELEV 53	<b>D</b> TDZE 47
---------	------------------



CATEGORY	A	B	C	D
LPV DA		345-7/8	298 (300-7/8)	
LNAV/VNAV DA		460-1 1/8	413 (500-1 1/8)	
LNAV MDA	440-1	393 (400-1)	440-1 1/8	393 (400-1 1/8)
CIRCLING	480-1 427 (500-1)	520-1 467 (500-1)	560-1 1/2 507 (600-1 1/2)	700-2 647 (700-2)

REIL Rwy 5, 14 and 23 **0**  
MIRL Rwy 5-23 **0**  
HIRL Rwy 14-32 **0**