

WAAS CH <b>69503</b> <b>W27A</b>	APP CRS <b>274°</b>	Rwy Ldg <b>6122</b> TDZE <b>812</b> Apt Elev <b>812</b>
--	------------------------	---

# RNAV (GPS) RWY 27

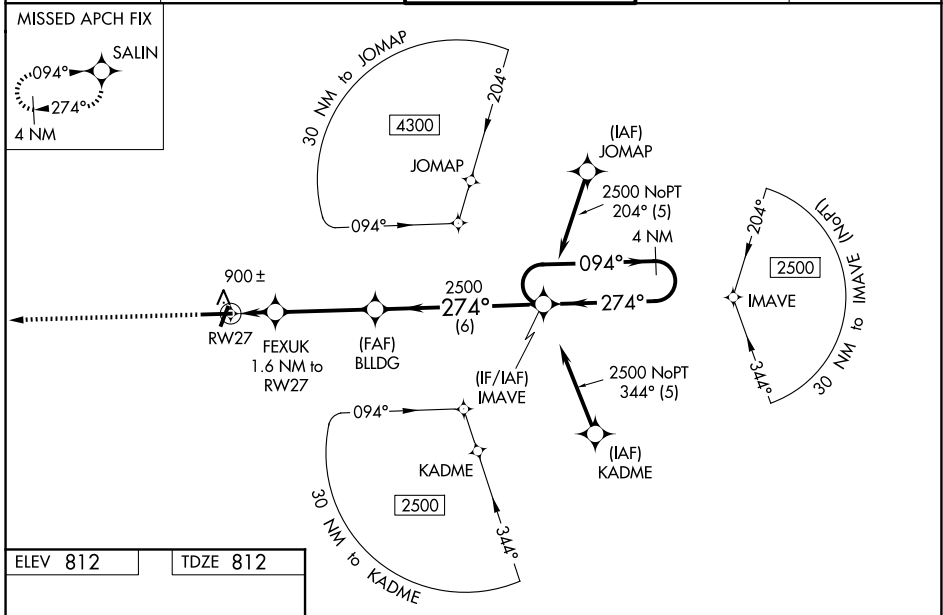
ATHENS/BEN EPPS (AHN)

RNP APCH - GPS.

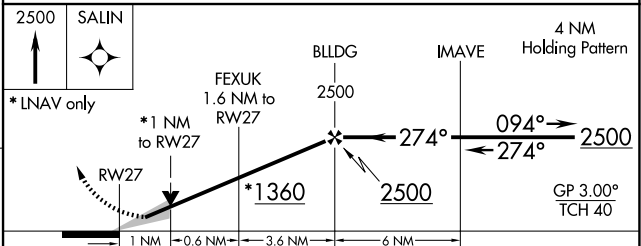
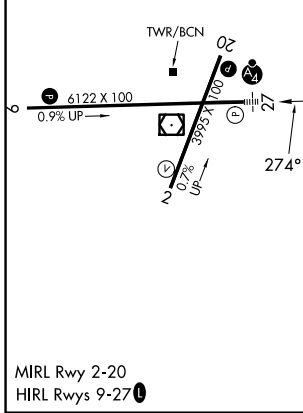
▼ For uncompensated Baro-VNAV systems, LNAV/VNAV NA below -9°C or above 54°C.  
 ▲ When local altimeter setting not received, use Winder altimeter setting: increase LPV DA to 1071 feet; increase LNAV/VNAV DA to 1121 feet; increase all MDA 60 feet and increase LNAV Cat C/D visibility to 1 mile and Circling Cat D visibility to 2¼ mile. For inop MALSF, increase LNAV/VNAV all Cats visibility to 7/8 mile, increase LNAV Cat C/D visibility to 1 mile. For inop MALSF when using Winder altimeter setting increase LPV all Cats visibility to 7/8 mile, increase LNAV/VNAV all Cats visibility to 1 mile, increase LNAV Cat C, D visibility to 1 1/8 mile. Baro-VNAV and VDP NA when using Winder altimeter setting. Inop table does not apply to LPV. Circling Rwy 2, 20 NA at night.

MALSF MISSED APPROACH: Climb to 2500 direct SALIN and hold.

ASOS <b>132.875</b>	ATLANTA APP CON * <b>132.475 291.1</b>	ATHENS TOWER * <b>126.3 (CTAF) 338.275</b>	GND CON <b>121.8</b>	UNICOM <b>122.95</b>
------------------------	---	---	-------------------------	-------------------------



ELEV 812	TDZE 812
----------	----------



CATEGORY	A	B	C	D
LPV DA		1012-3/4	200 (200-3/4)	
LNAV/VNAV DA		1064-3/4	252 (300-3/4)	
LNAV MDA		1160-3/4	348 (400-3/4)	
CIRCLING	1260-1 448 (500-1)	1280-1 468 (500-1)	1320-1 1/2 508 (600-1 1/2)	1460-2 648 (700-2)

SE-4, 16 APR 2026 to 14 MAY 2026

SE-4, 16 APR 2026 to 14 MAY 2026