


VOR/DME MFE 117.2 Chan 119	APP CRS 134°	Rwy Ldg 6983 TDZE 107 Apt Elev 107
--	------------------------	---

VOR RWY 14

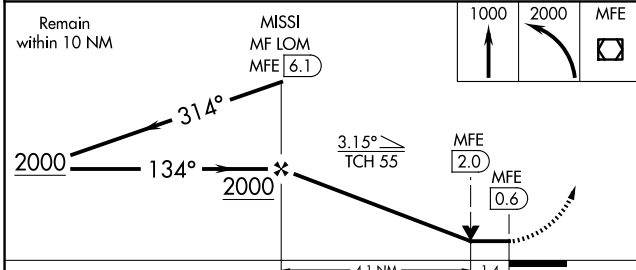
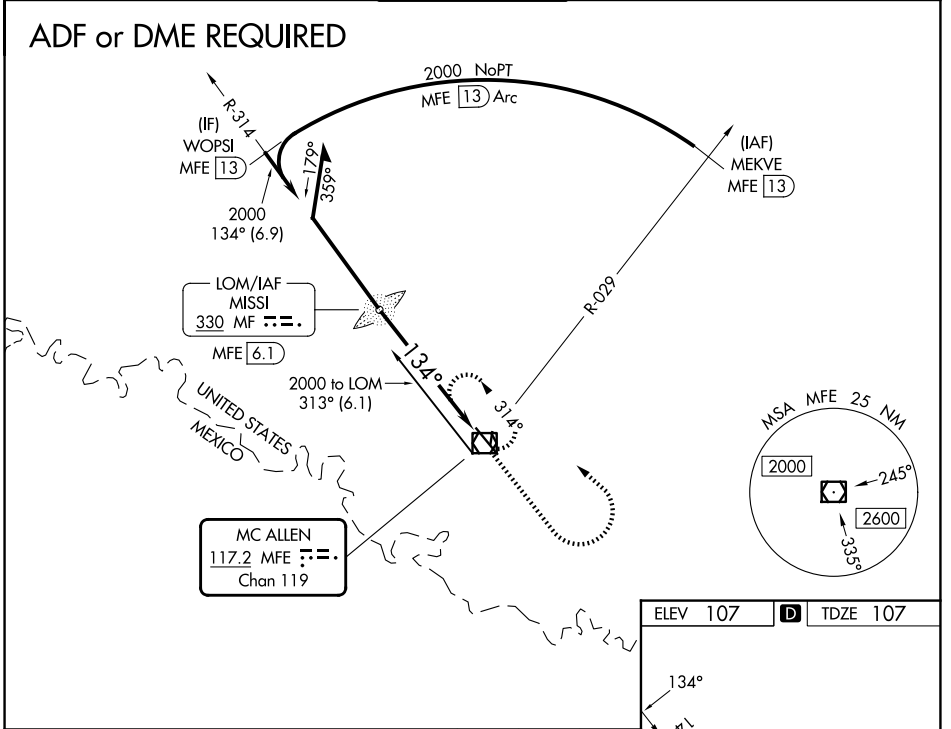
MC ALLEN INTL (MFE)

⚠ Circling NA northeast of Rwy 14-32. ADF or DME required. For inp MALSR, increase S-14 Cat C/D visibility to 1 1/8 mile. When local altimeter setting not received, use Weslaco altimeter setting and increase all MDA 40 feet and S-14 Cat C/D and Circling Cat C visibility 1/8 mile. VDP NA when using Weslaco altimeter setting.

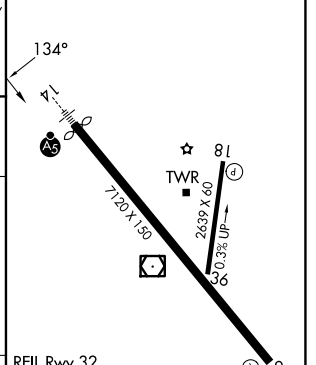
MALSR 

MISSED APPROACH: Climb to 1000 then climbing left turn to 2000 direct MFE VOR/DME and hold.

ATIS 128.5	VALLEY APP CON 126.55 377.2	MC ALLEN TOWER ★ 118.5 (CTAF) 0 256.9	GND CON 121.8	UNICOM 122.95
----------------------	---------------------------------------	--	-------------------------	-------------------------





ELEV 107	D	TDZE 107
----------	----------	----------



CATEGORY	A	B	C	D
S-14	620-1/2	513 (600-1/2)	620-1	513 (600-1)
CIRCLING	620-1	513 (600-1)	620-1 1/2	800-2 1/4
			513 (600-1/2)	693 (700-2 1/4)

REIL Rwy 32

HIRL Rwy 14-32 

MIRL Rwy 18-36 

FAF to MAP 5.5 NM

Knots	60	90	120	150	180
Min:Sec	5:30	3:40	2:45	2:12	1:50

SC-3, 16 APR 2026 to 14 MAY 2026

SC-3, 16 APR 2026 to 14 MAY 2026