

LOC I-TW1 <b>109.1</b>	APP CRS <b>016°</b>	Rwy Ldg <b>10302</b>
		TDZE <b>1314</b>
		Apt Elev <b>1333</b>

# ILS or LOC RWY 1L

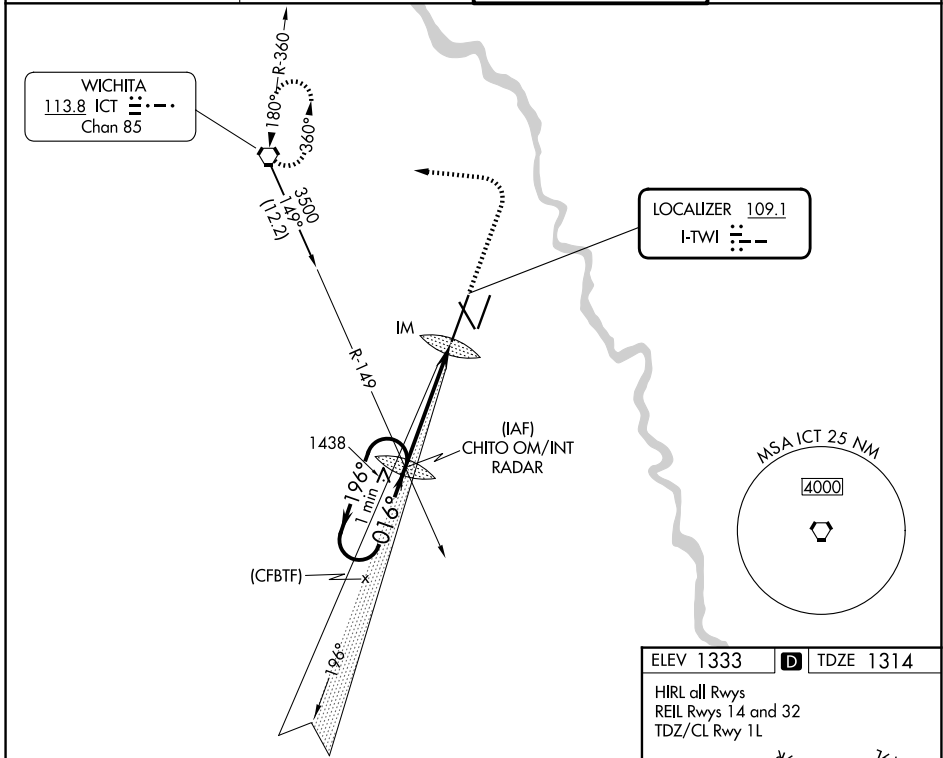
WICHITA DWIGHT D EISENHOWER NTL (ICT)

▼ Simultaneous approach authorized with Rwy 1R.  
▲ For inoperative ALSF-2, increase S-ILS 1L Cat E visibility to RVR 4000 and S-LOC 1L Cat E visibility to RVR 6000.



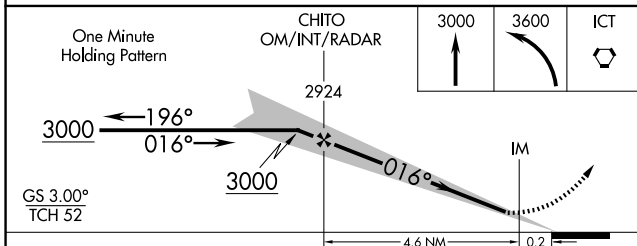
MISSED APPROACH: Climb to 3000 then climbing left turn to 3600 direct ICT VORTAC and hold.

ATIS <b>125.15</b>	WICHITA APP CON <b>126.7 353.5</b>	WICHITA TOWER <b>118.2 257.8</b>	GND CON <b>121.9 348.6</b>
-----------------------	---------------------------------------	-------------------------------------	-------------------------------

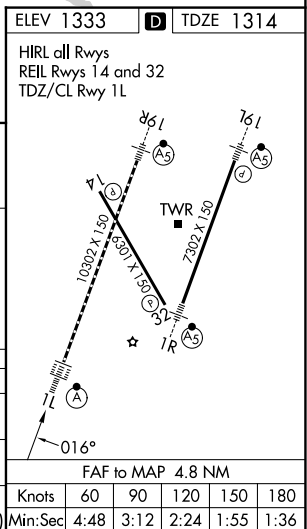


NC-2, 16 APR 2026 to 14 MAY 2026

NC-2, 16 APR 2026 to 14 MAY 2026



CATEGORY	A	B	C	D	E
S-ILS 1L	1514/18 200 (200-½)				
S-LOC 1L	1700/24 386 (400-½)		1700/40 386 (400-¾)		
CIRCLING	1800-1 467 (500-1)	1980-1¾ 647 (700-1¾)	1980-2 647 (700-2)	2000-2¼ 667 (700-2¼)	



ELEV 1333	TDZE 1314
HIRL all Rwys REIL Rwys 14 and 32 TDZ/CL Rwy 1L	
Knots	60 90 120 150 180
Min:Sec	4:48 3:12 2:24 1:55 1:36