

WAAS CH <b>99617</b> <b>W32A</b>	APP CRS <b>326°</b>	Rwy Ldg TDZE Apt Elev	<b>6301</b> <b>1322</b> <b>1333</b>
--	------------------------	-----------------------------	---

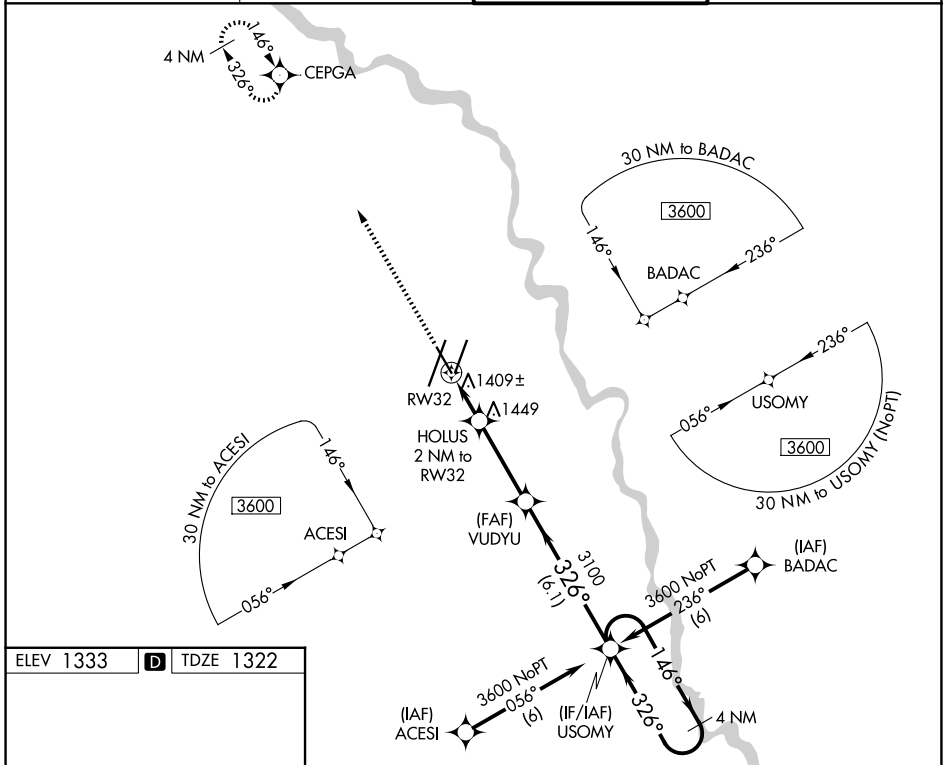
# RNAV (GPS) RWY 32

WICHITA DWIGHT D EISENHOWER NTL (ICT)

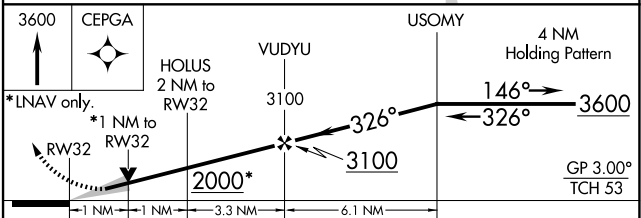
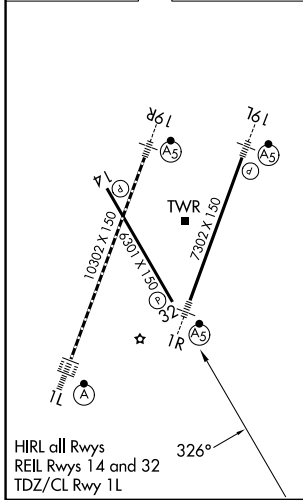
For uncompensated Baro-VNAV systems, LNAV/VNAV NA below -15°C (5°F) or above 54°C (130°F).  
DME/DME RNP-0.3 NA.

MISSED APPROACH: Climb to 3600 direct CEPGA and hold.

ATIS <b>125.15</b>	WICHITA APP CON <b>126.7 353.5</b>	WICHITA TOWER <b>118.2 257.8</b>	GND CON <b>121.9 348.6</b>
-----------------------	---------------------------------------	-------------------------------------	-------------------------------



ELEV 1333	<b>D</b>	TDZE 1322
-----------	----------	-----------



CATEGORY	A	B	C	D
LPV DA		1572-3/4	250 (300-3/4)	
LNAV/VNAV DA		1761-1 1/2	439 (500-1 1/2)	
LNAV MDA		1680-1 358 (400-1)		1680-1 1/4 358 (400-1 1/4)
CIRCLING	1800-1	467 (500-1)	1980-1 3/4 647 (700-1 3/4)	1980-2 647 (700-2)

NC-2, 16 APR 2026 to 14 MAY 2026

NC-2, 16 APR 2026 to 14 MAY 2026