

APP CRS	Rwy Ldg	6301
146°	TDZE	1333
	Apt Elev	1333

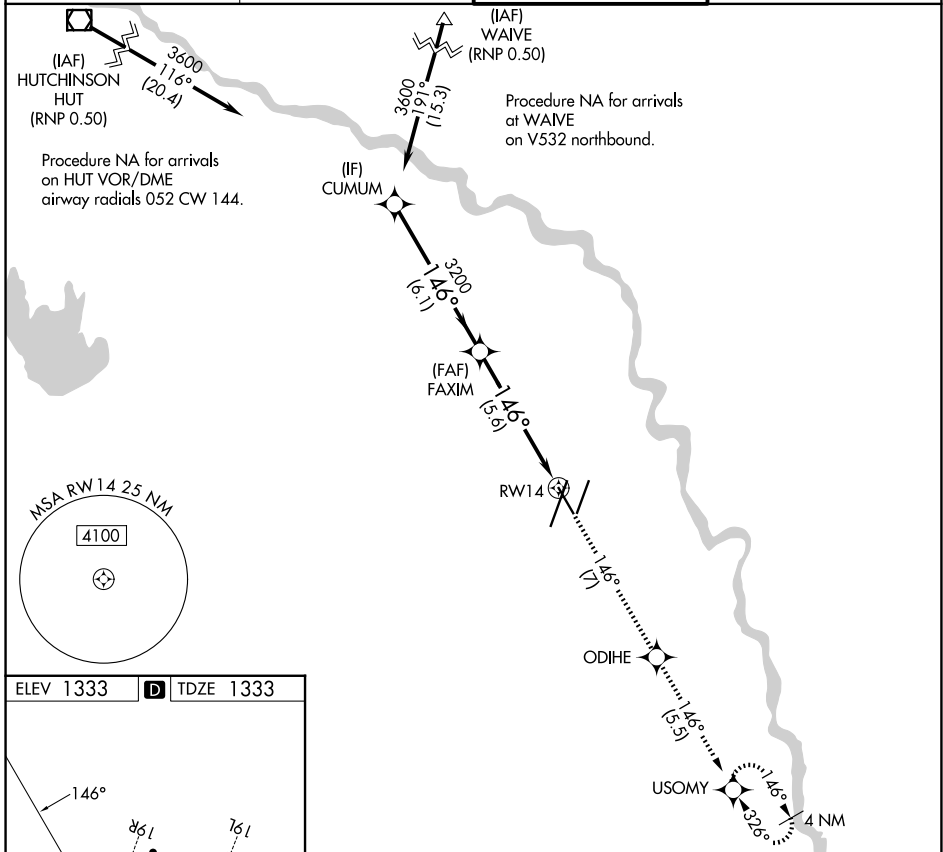
RNAV (RNP) Z RWY 14

WICHITA DWIGHT D EISENHOWER NTL (ICT)

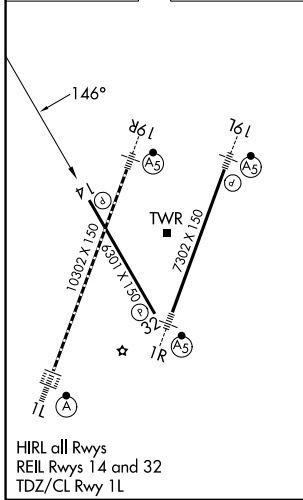
▼ For uncompensated Baro-VNAV systems, procedure NA below -15°C (5°F) or above 54°C (130°F). GPS required.

MISSED APPROACH: Climb to 3600 on track 146° to ODIHE and on track 146° to USOMY and hold.

ATIS 125.15	WICHITA APP CON 126.7 353.5	WICHITA TOWER 118.2 257.8	GND CON 121.9 348.6
-----------------------	---------------------------------------	-------------------------------------	-------------------------------



ELEV 1333	D	TDZE 1333
-----------	----------	-----------



VGSi and RNAV glidepath not coincident (VGSi Angle 3.00/TCH 50).	3600	ODIHE	tr 146°	USOMY
CUMUM	FAXIM			
3600	3200			
GP 3.00° TCH 50	146°			
	6.1 NM	5.6 NM		
CATEGORY	A	B	C	D
RNP 0.11 DA		1682-1 $\frac{1}{8}$	349 (400-1 $\frac{1}{8}$)	
RNP 0.30 DA		1732-1 $\frac{1}{8}$	399 (400-1 $\frac{1}{8}$)	

AUTHORIZATION REQUIRED

NC-2, 16 APR 2026 to 14 MAY 2026

NC-2, 16 APR 2026 to 14 MAY 2026