

RNAV (RNP) Z RWY 19R

WICHITA DWIGHT D EISENHOWER NTL (ICT)

| | | |
|-------------|----------|--------------|
| APP CRS | Rwy Ldg | 10302 |
| 196° | TDZE | 1330 |
| | Apt Elev | 1333 |

▼ For uncompensated Baro-VNAV systems, procedure NA below -15°C (5°F) or above 54°C (130°F). For inoperative MALS, increase all Cats visibility to 1 ¼ mile. GPS required.

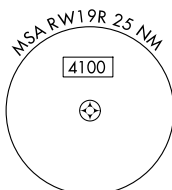
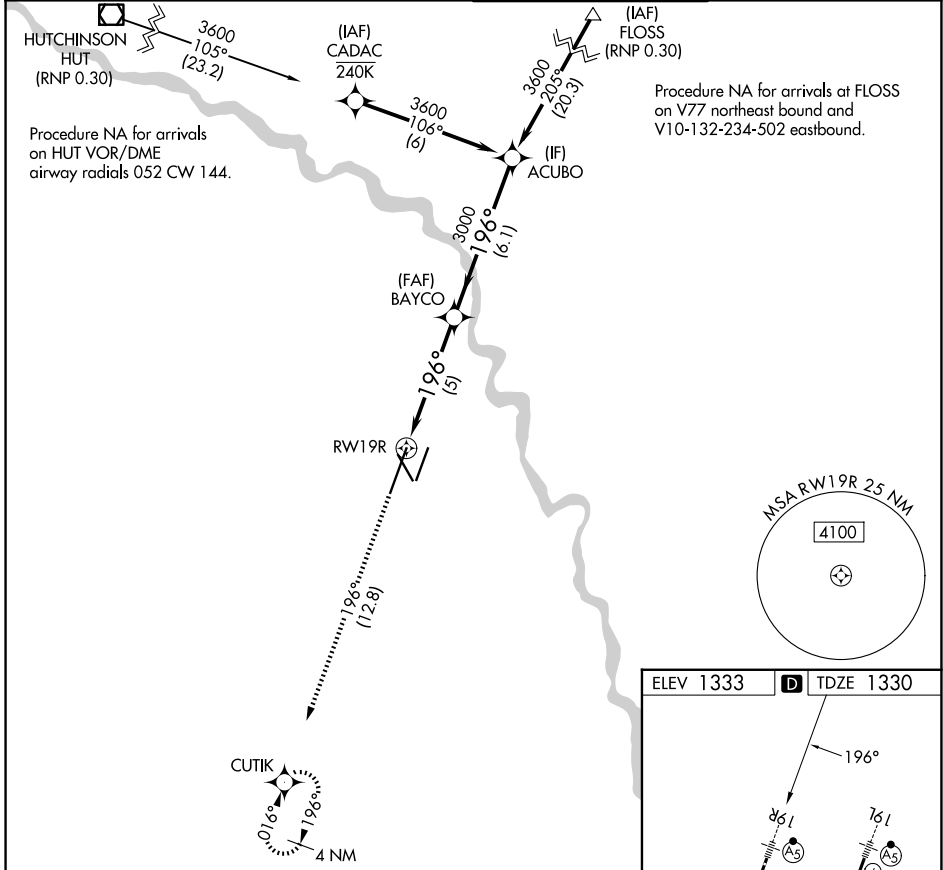
MALS R MISSED APPROACH: Climb to 4200 on track 196° to CUTIK and hold.

ATIS **125.15**

WICHITA APP CON **126.7 353.5**

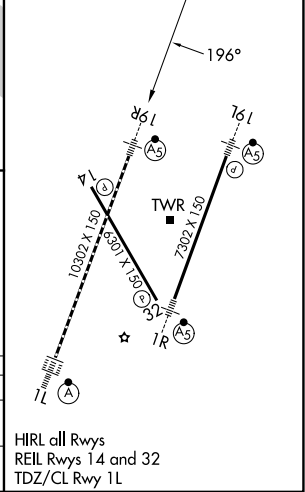
WICHITA TOWER **118.2 257.8**

GND CON **121.9 348.6**



ELEV 1333 TDZE 1330

| | | | |
|-------------------------------|---------------------|--------|--------------------|
| 4200 | CUTIK | BAYCO | ACUBO |
| ↑ | | 3000 | 3600 |
| tr 196° | | | |
| RWY 19R | | | |
| | 5 NM | 6.1 NM | |
| | | | GP 3.00° TCH 52 |
| CATEGORY | A | B | C |
| RNP 0.30 DA | 1727/50 397 (400-1) | | |
| AUTHORIZATION REQUIRED | | | |



HIRL all Rwys
REIL Rwys 14 and 32
TDZ/CL Rwy 1L

NC-2, 16 APR 2026 to 14 MAY 2026

NC-2, 16 APR 2026 to 14 MAY 2026