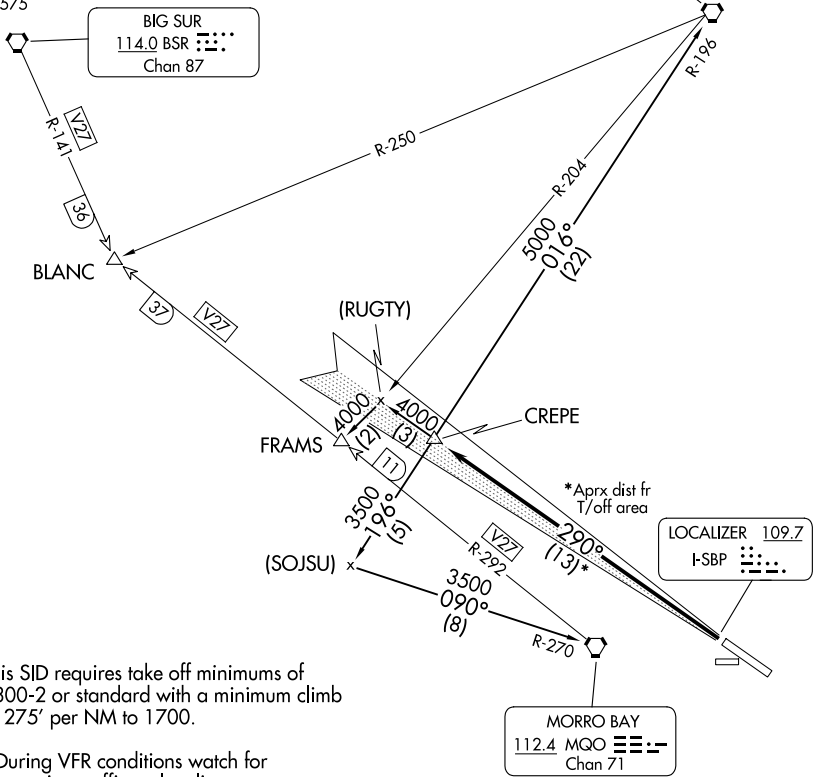


# CREPE THREE DEPARTURE

GND CON  
121.6  
SAN LUIS TOWER \*  
124.0 (CTAF) 379.9  
SANTA BARBARA DEP CON \*  
127.725 244.575

BIG SUR  
114.0 BSR  
Chan 87

PASO ROBLES  
114.3 PRB  
Chan 90



NOTE: This SID requires take off minimums of 1300-2 or standard with a minimum climb of 275' per NM to 1700.

NOTE: During VFR conditions watch for opposing traffic on localizer course.

NOTE: This procedure applicable to Runway 29 departures only.

NOTE: Chart not to scale.

## DEPARTURE ROUTE DESCRIPTION

**TAKEOFF RUNWAY 29:** Climb via San Luis Obispo localizer I-SBP west course to CREPE INT; thence via (transition) or (assigned route).

**FRAMS TRANSITION (CREPE3.FRAMS):** From over CREPE INT via I-SBP LOC west course and PRB R-204 to FRAMS INT.

**MORRO BAY TRANSITION (CREPE3.MQO):** From over CREPE INT via PRB R-196 and MQO R-270 to MQO VORTAC.

**PASO ROBLES TRANSITION (CREPE3.PRB):** From over CREPE INT via PRB R-196 to PRB VORTAC.

# CREPE THREE DEPARTURE

SW-3, 16 APR 2026 to 14 MAY 2026

SW-3, 16 APR 2026 to 14 MAY 2026