

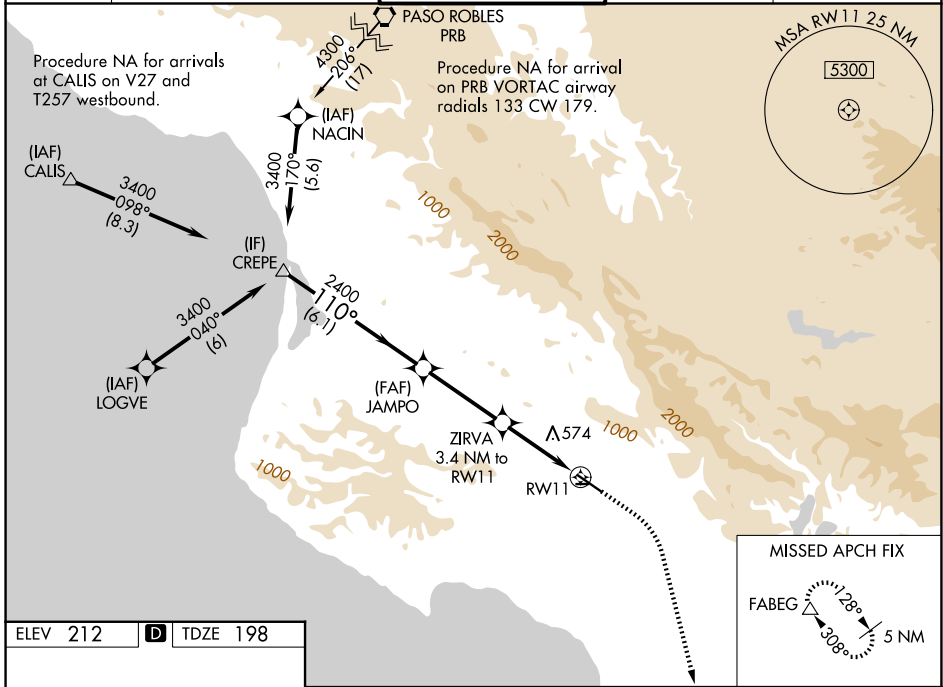
WAAS CH 50328 W11A	APP CRS 110°	Rwy Ldg TDZE Apt Elev	5300 198 212
--	------------------------	-----------------------------	---

RNAV (GPS) RWY 11

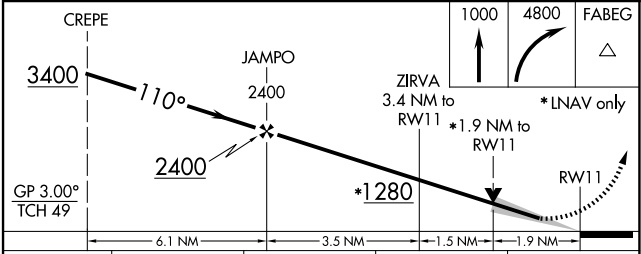
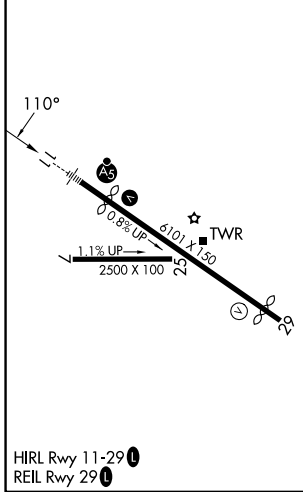
SAN LUIS OBISPO COUNTY RGNL (SBP)

RNP APCH.	<p>⚠ Circling NA north of Rwy 11-29. Circling Rwy 25 NA at night. For uncompensated Baro-VNAV systems, LNAV/VNAV NA below 0°C or above 54°C. For inop ALS, increase LNAV/VNAV all Cats visibility to 2 SM.</p>	MALSRL	MISSED APPROACH: Climb to 1000 then climbing right turn to 4800 direct FABEG and hold, continue climb-in-hold to 4800.
-----------	--	--------	--

ATIS 120.6	SANTA BARBARA APP CON* 127.725 244.575	SAN LUIS TOWER* 124.0 (CTAF) 379.9	GND CON 121.6	UNICOM 122.95
----------------------	--	--	-------------------------	-------------------------



ELEV 212	D	TDZE 198
----------	----------	----------



CATEGORY	A	B	C	D
LPV DA		398-½	200 (200-½)	
LNAV/VNAV DA		946-1¾	748 (800-1¾)	
LNAV MDA	840-½	642 (700-½)	840-1⅜	642 (700-1⅜)
CIRCLING	840-1 628 (700-1)	1220-1½ 1008 (1100-1½)	1460-3 1248 (1300-3)	1560-3 1348 (1400-3)

SW-3, 16 APR 2026 to 14 MAY 2026

SW-3, 16 APR 2026 to 14 MAY 2026