

WAAS CH 50517 W18A	APP CRS 184°	Rwy ldg TDZE Apt Elev	4498 22 24
--	------------------------	-----------------------------	---------------------------------------

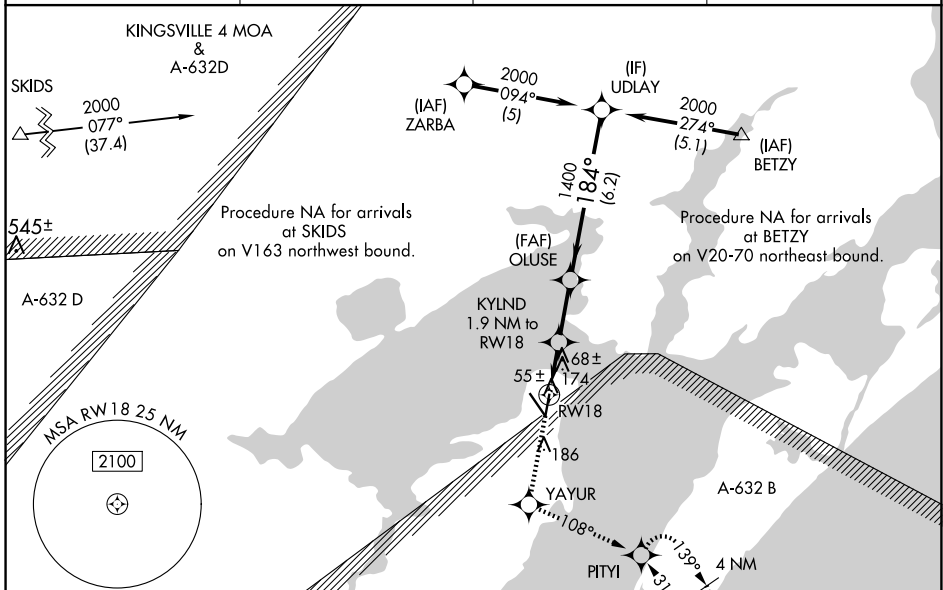
RNAV (GPS) RWY 18

ARANSAS COUNTY (RKP)

⚠ Baro-VNAV NA when using Ingleside altimeter setting. For uncompensated Baro-VNAV systems, LNAV/VNAV NA below -15°C (5°F) or above 54°C (130°F). DME/DME RNP-0.3 NA. Helicopter visibility reduction below ¾ SM NA. When local altimeter setting not received, use Ingleside altimeter setting and increase all DA 33 feet and all MDA 40 feet; increase LNAV/VNAV visibility all Cats ¼ mile. VDP NA with Ingleside altimeter setting.

MISSED APPROACH: Climb to 2000 direct YAYUR and on track 108° to PITYI and hold, continue climb-in-hold to 2000.

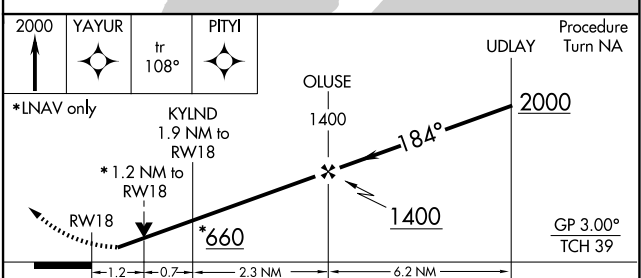
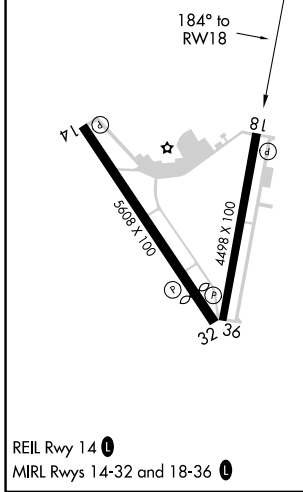
ASOS 119.275	CORPUS APP CON 120.9 348.725	CLNC DEL 121.7	UNICOM 123.05 (CTAF) 0
------------------------	--	--------------------------	----------------------------------



SC-3, 16 APR 2026 to 14 MAY 2026

SC-3, 16 APR 2026 to 14 MAY 2026

ELEV 24	TDZE 22
----------------	----------------



CATEGORY	A	B	C	D
LPV DA	272-1	250 (300-1)		NA
LNAV/VNAV DA	459-1½	437 (500-1½)		NA
LNAV MDA	440-1	418 (500-1)	440-1¼ 418 (500-1¼)	NA
CIRCLING	500-1	476 (500-1)	500-1½ 476 (500-1½)	NA