

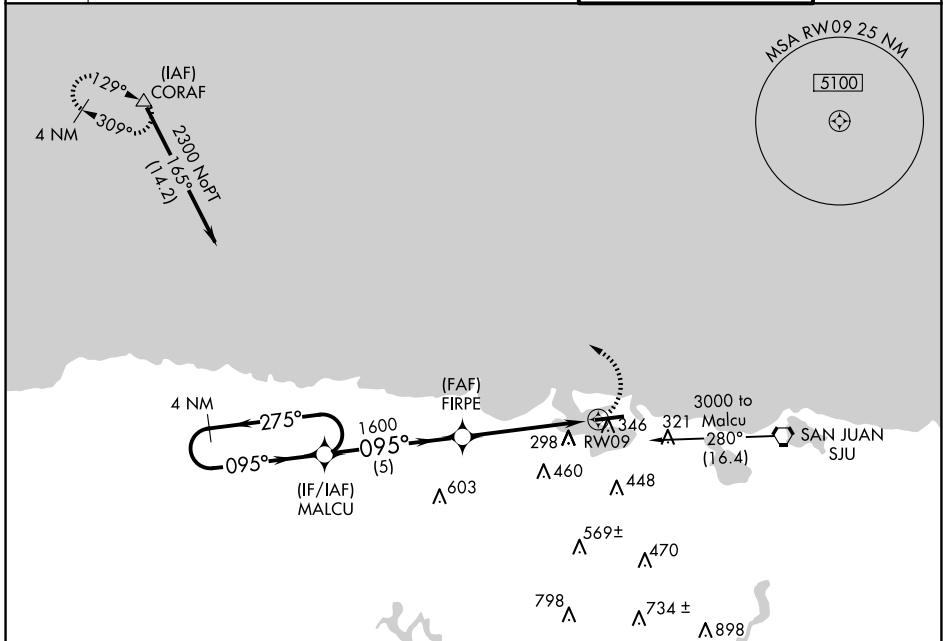
APP CRS	Rwy Ldg	5126
095°	TDZE	10
	Apt Elev	10

RNAV (GPS) RWY 9

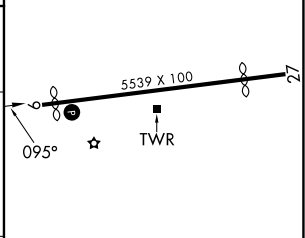
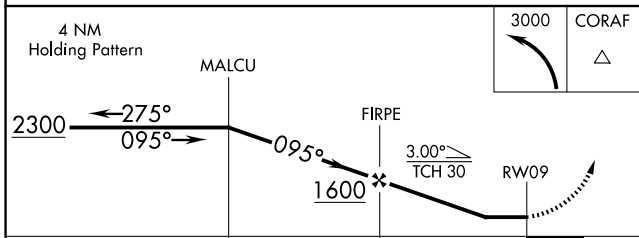
FERNANDO LUIS RIBAS DOMINICCI (SIG) (TJIG)

RNP APCH.	<p>Use Luis Munoz Marin Intl altimeter setting. Circling Rwy 27 NA at night. Rwy 9 helicopter visibility reduction below 3/4 SM NA.</p>	MISSED APPROACH: Climbing left turn to 3000 direct CORAF WP and hold.
-----------	---	---

ATIS	SAN JUAN APP CON	ISLA GRANDE TOWER*	GND CON
120.4	119.4 269.2 (WEST & SW) 120.9 290.2 (NORTH & EAST)	135.875 (CTAF) 298.85	121.7



ELEV	10	D	TDZE	10
------	----	----------	------	----



CATEGORY	A	B	C	D
LNVA MDA	540-1	530 (600-1)		NA
CIRCLING	660-1	650 (700-1)		NA

REIL Rwy 9 and 27
MIRL Rwy 9-27

SE-3, 16 APR 2026 to 14 MAY 2026

SE-3, 16 APR 2026 to 14 MAY 2026