

BOJAA FOUR DEPARTURE (BOJAA4.BOJAA)

EIELSON AFB (PAEI)

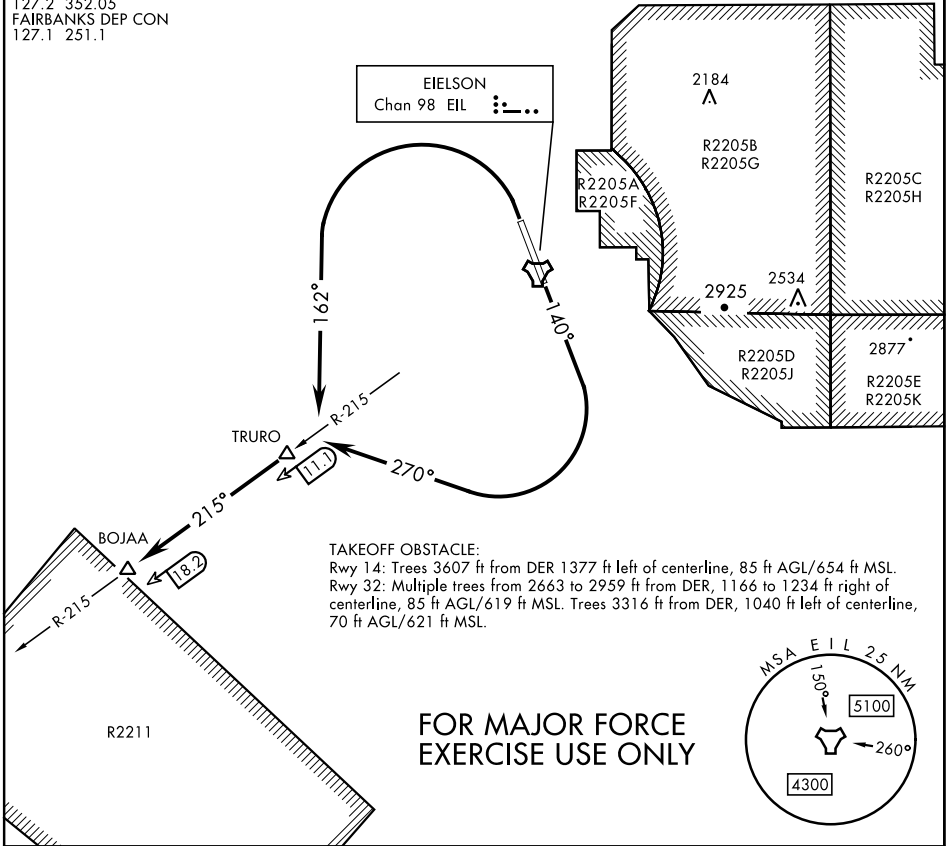
FAIRBANKS, ALASKA

RADAR required

[USAF]

ATIS ★ 119.9 273.5
 CLNC DEL
 343.7
 GND CON
 121.8 275.8
 TOWER ★
 127.2 352.05
 FAIRBANKS DEP CON
 127.1 251.1

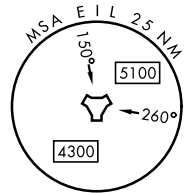
EIELSON
 Chan 98 EIL :...



TAKEOFF OBSTACLE:

Rwy 14: Trees 3607 ft from DER 1377 ft left of centerline, 85 ft AGL/654 ft MSL.
 Rwy 32: Multiple trees from 2663 to 2959 ft from DER, 1166 to 1234 ft right of centerline, 85 ft AGL/619 ft MSL. Trees 3316 ft from DER, 1040 ft left of centerline, 70 ft AGL/621 ft MSL.

FOR MAJOR FORCE EXERCISE USE ONLY



AK, 19 MAR 2026 to 14 MAY 2026

AK, 19 MAR 2026 to 14 MAY 2026



DEPARTURE ROUTE DESCRIPTION

TAKEOFF RWY 14: Climb heading 140° to 1100, then climbing right turn to heading 270°, intercept EIL TACAN R-215 outbound to BOJAA. Climb and maintain 3700 or assigned altitude.

TAKEOFF RWY 32: Climbing left turn to heading 162° to TRURO then continue outbound on EIL TACAN R-215 to BOJAA. Maintain at or above 3700 or assigned altitude.

BOJAA FOUR DEPARTURE (BOJAA4.BOJAA)

Orig 26DEC24

FAIRBANKS, ALASKA

EIELSON AFB (PAEI)