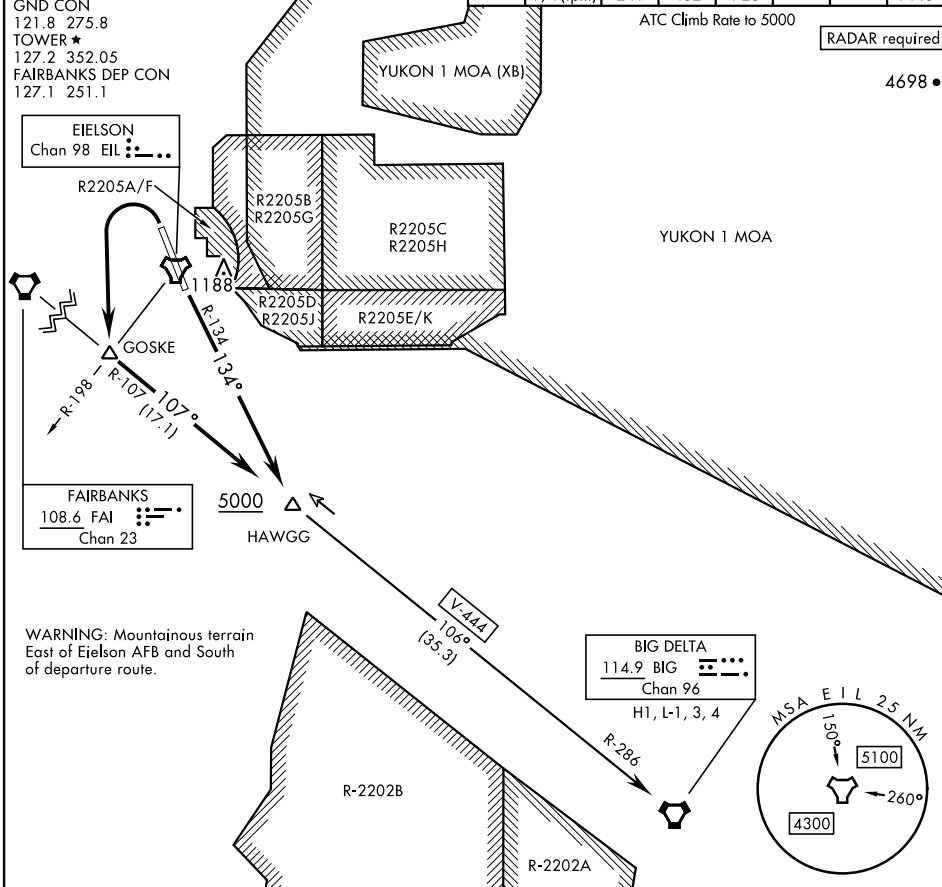


HAWGG EIGHT DEPARTURE (HAWGG8•HAWGG)

EIELSON AFB (PAEI)

FAIRBANKS, ALASKA

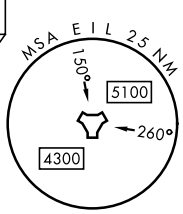
ATIS ★ 119.9 273.5	AL-1729 [USAF]	YUKON 2 MOA	Rwy	Knots	60	120	180	240	300	360
CLINC DEL 343.7			32	V/V(fpm)	214	428	642	856	1070	1284
GND CON 121.8 275.8			14	V/V(fpm)	241	482	723	964	1205	1446



EIELSON
Chan 98 EIL

FAIRBANKS
108.6 FAI
Chan 23

BIG DELTA
114.9 BIG
Chan 96
H1, L-1, 3, 4



DEPARTURE ROUTE DESCRIPTION

TAKEOFF RWY 14: Turn left to join EIL TACAN R-134 to FAI VORTAC R-107. Cross HAWGG at or above 5000. Thence...

TAKEOFF RWY 32: Turn left to GOSKE then continue outbound FAI VORTAC R-107 to HAWGG. Cross HAWGG at or above 5000. Thence...

...intercept V-444 to BIG VORTAC, then via assigned route.

HAWGG EIGHT DEPARTURE (HAWGG8•HAWGG)

Orig 20APR23

FAIRBANKS, ALASKA
EIELSON AFB (PAEI)

AK, 19 MAR 2026 to 14 MAY 2026

AK, 19 MAR 2026 to 14 MAY 2026