

# COPTER RNAV (GPS) 004°

APCH CRS <b>004°</b>	Rwy Idg THRE Arprt Elev	<b>5996</b> N/A <b>177</b>
-------------------------	-------------------------------	----------------------------------

[USN]

WHITING FLD NAS - SOUTH (KNDZ)

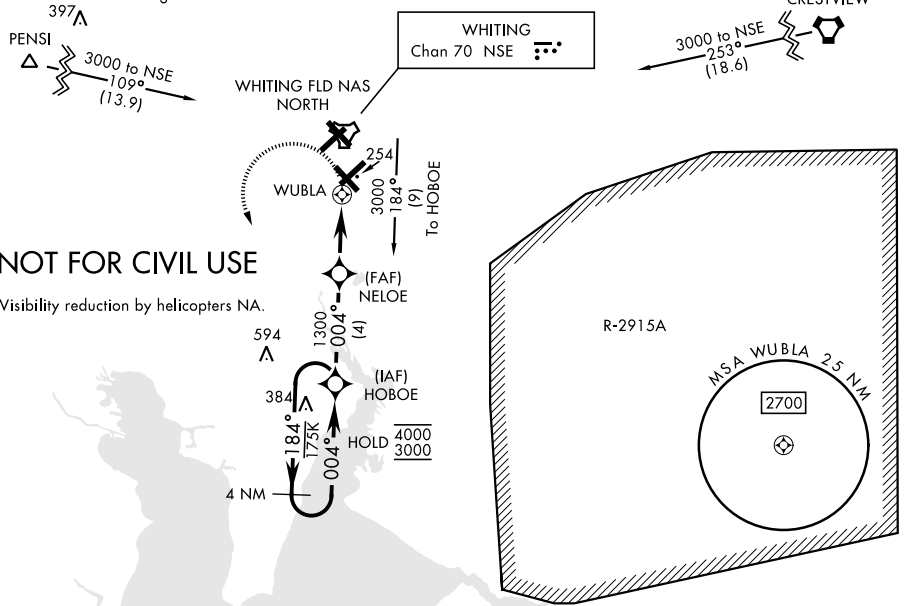
RNP APCH

MISSED APPROACH: Climb to 700, then climbing left turn to 3000 direct HOBEO and hold. Continue climb-in-hold to 3000. Contact Pensacola Approach Control.

▼ Max procedure airspeed 90 KIAS.  
Arm approach made 30 NM from airport.

ATIS ★ <b>273.575</b>	PENSACOLA APP CON <b>124.85 235.775</b>	SOUTH WHITING TOWER ★ <b>123.075 348.675</b>	GND CON <b>317.65</b>	CLNC DEL <b>355.6</b>	ASR/PAR
--------------------------	--	---	--------------------------	--------------------------	---------

CAUTION: 1. Intensive VFR student training all quadrants.  
2. Whiting FLD NAS - NORTH located 1 NM N.



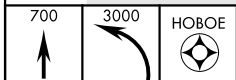
**NOT FOR CIVIL USE**

Visibility reduction by helicopters NA.

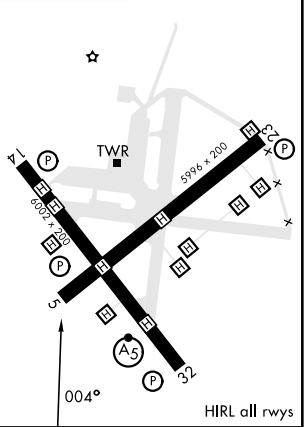
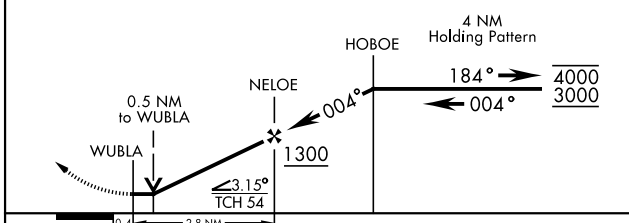
SE-3, 16 APR 2026 to 14 MAY 2026

SE-3, 16 APR 2026 to 14 MAY 2026

EMERG SAFE ALT 100 NM 3500



ELEV 177



CATEGORY	COPTER		
LNAV MDA	520-1	350	(400-1)
CIRCLING	NOT AUTHORIZED		

# COPTER RNAV (GPS) 004°