

MILTON, FLORIDA

ILS Z or RNAV (GPS) RWY 32

LOC/DME I-NDZ 110.55 Chan 42(Y)	APCH CRS 319°	Rwy Ildg TDZE Arprt Elev 6002 172 177
--	-------------------------	---

AL-1909 [USN]

WHITING FLD NAS - SOUTH (KNDZ)

RNP APCH. RNAV 1 - GPS.

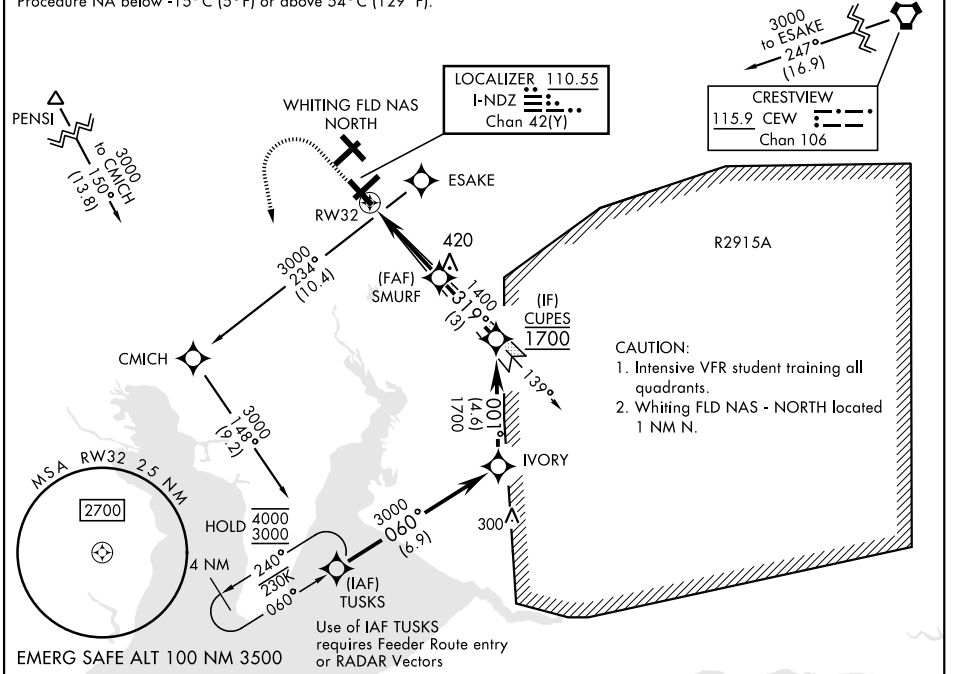
- * When ALS inop, increase vis to 3/4 mile.
- ** When ALS inop, increase vis to 1 mile.
- *** Circling not authorized N of Rwy 14 and 23.



MISSED APPROACH: Climb to 800. Then climbing left turn to 3000, direct to TUSKS and hold. Contact Pensacola Approach Control.

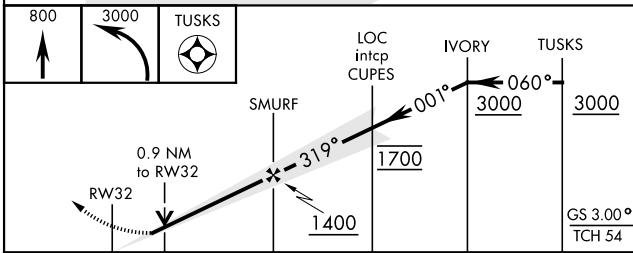
ATIS * 273.575	PENSACOLA APP CON 124.85 235.775	SOUTH WHITING TOWER * 123.075 348.675	GND CON 317.65	CLNC DEL 355.6	ASR/PAR
--------------------------	--	--	--------------------------	--------------------------	---------

For uncompensated Baro-VNAV systems,
Procedure NA below -15°C (5°F) or above 54°C (129°F).

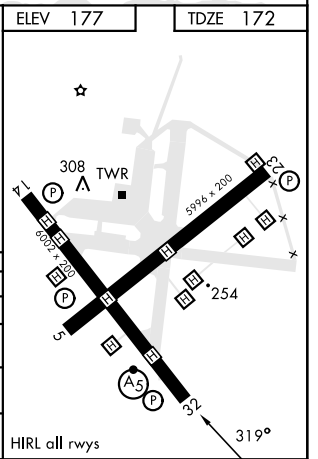


SE-3, 16 APR 2026 to 14 MAY 2026

SE-3, 16 APR 2026 to 14 MAY 2026



CATEGORY	A	B	C	D
S-ILS 32 *	372-1/2		200	(200-1/2)
LNAV/ * VNAV DA	422-1/2	250	(300-1/2)	425-1/2 253 (300-1/2)
LNAV MDA **	520-1/2 348 (400-1/2)		520-5/8 348 (400-5/8)	
CIRCLING ***	580-1 403 (500-1)	640-1 463 (500-1)	660-1 1/2 483 (500-1 1/2)	740-2 563 (600-2)



MILTON, FLORIDA
Orig 10AUG23

30°42'N-87°01'W

WHITING FLD NAS - SOUTH (KNDZ)

ILS Z or RNAV (GPS) RWY 32