

RNAV (GPS) RWY 11

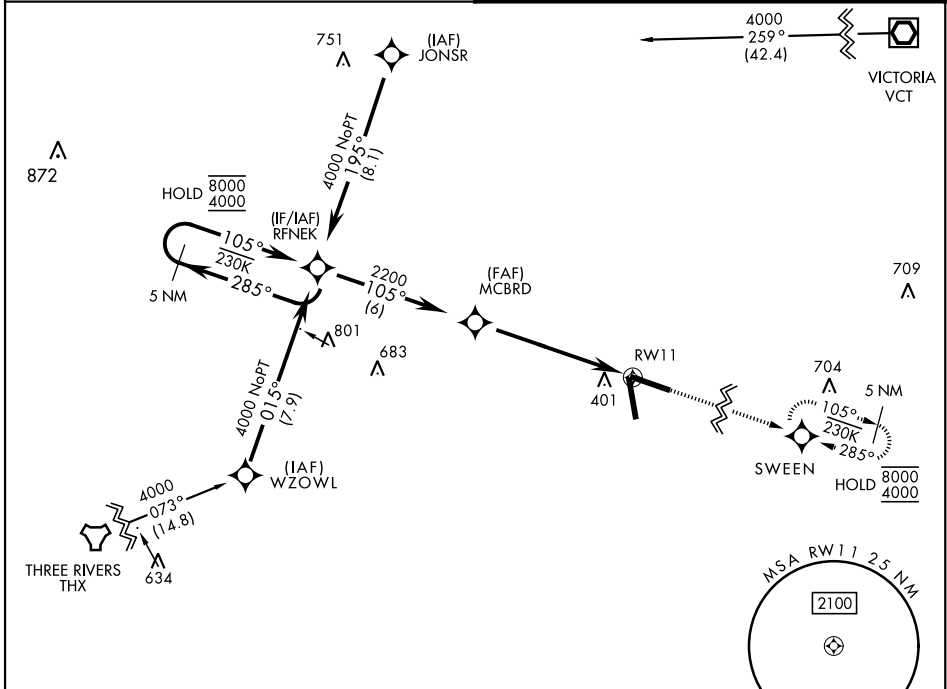
APCH CRS	Rwy Idg	8000
105°	TDZE	318
	Arpt Elev	322

[USN]

GOLIAD NOLF (KNGT)

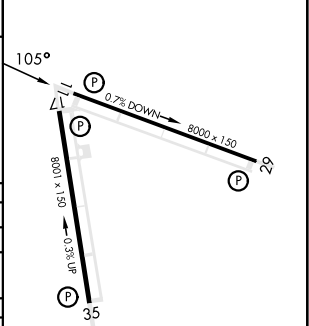
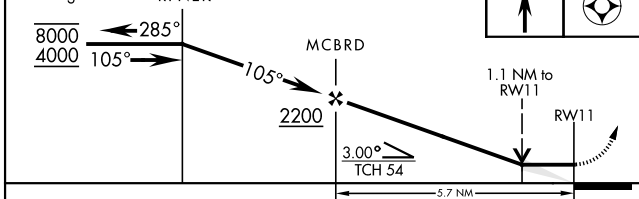
RNP APCH
 When local altimeter setting not received, use Beeville Muni altimeter setting.
 MISSED APPROACH: Climb to 4000 direct SWEEN and hold, continue climb-in-hold to 4000.

ASOS 353.675	CTAF 132.875 307.075
------------------------	--------------------------------



US Navy Training Wing Four Use Only
 EMERG SAFE ALT 100 NM 11,100

5 NM Holding Pattern	RFNEK	VDP NA with Beeville Muni altimeter setting.	4000	SWEEN	ELEV 322	TDZE 318
----------------------	-------	--	------	-------	----------	----------



CATEGORY	A	B	C	D
LNAV MDA	720-1 402 (400-1)	720-1½ 402 (400-1½)	720-1½ 402 (400-1½)	720-1½ 402 (400-1½)
CIRCLING	800-1 478 (500-1)	820-1 498 (500-1)	820-1½ 498 (500-1½)	880-2 558 (600-2)
BEEVILLE MUNI ALTIMETER SETTING MINIMA				
LNAV MDA	760-1 442 (500-1)	760-1½ 442 (500-1½)	760-1½ 442 (500-1½)	760-1½ 442 (500-1½)
CIRCLING	800-1 478 (500-1)	820-1 498 (500-1)	820-1½ 498 (500-1½)	880-2 558 (600-2)

HIRL Rwy 11-29, 17-35
 TDZL Rwy 11-29, 17-35

RNAV (GPS) RWY 11

SC-3, 16 APR 2026 to 14 MAY 2026

SC-3, 16 APR 2026 to 14 MAY 2026