

RNAV (GPS) RWY 35

APCH CRS	Rwy ldg	8001
346°	TDZE	307
	Arpt Elev	322

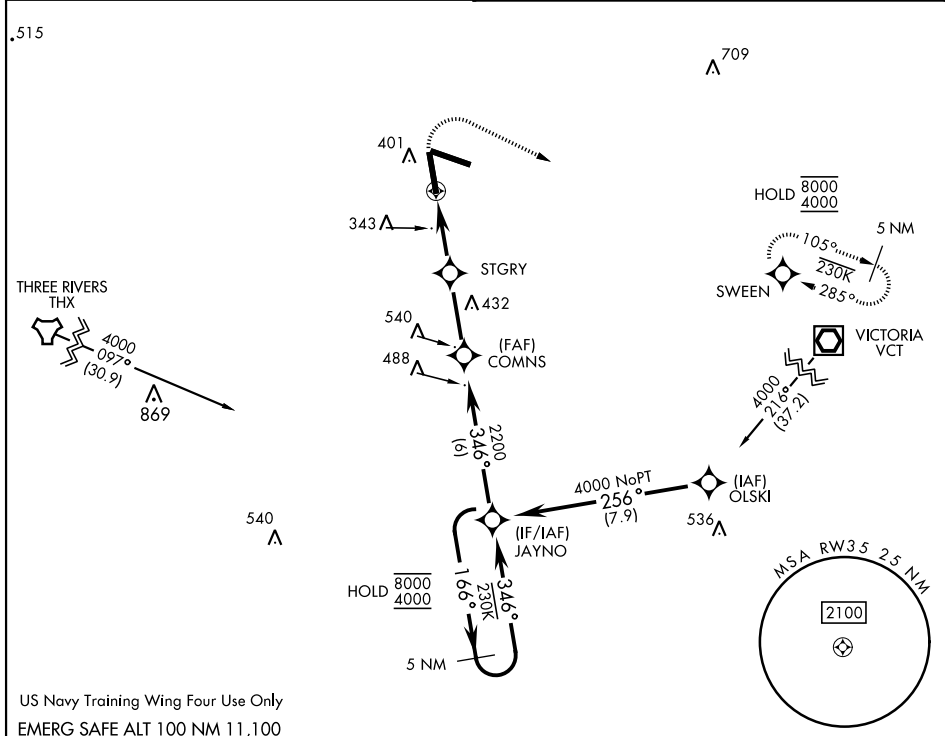
[USN]

GOLIAD NOLF (KNGT)

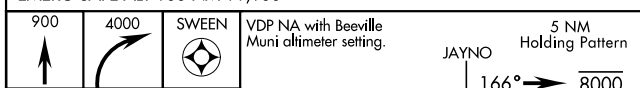
RNP APCH
When local altimeter setting not received, use Beeville Muni altimeter setting.

MISSED APPROACH: Climb to 900 then climbing right turn to 4000 direct SWEEN and hold, continue climb-in-hold to 4000.

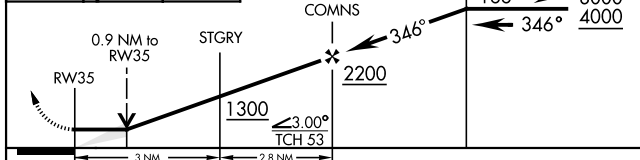
ASOS 353.675	CTAF 132.875 307.075
------------------------	--------------------------------



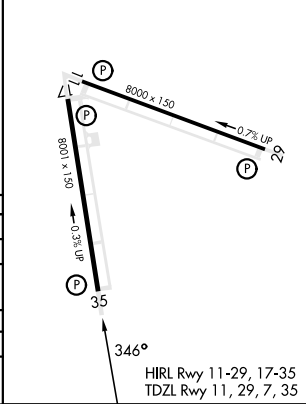
US Navy Training Wing Four Use Only
EMERG SAFE ALT 100 NM 11,100



ELEV	322	TDZE	307
------	-----	------	-----



CATEGORY	A	B	C	D
LNAV MDA	620-1 313 (300-1)			
CIRCLING	760-1 438 (500-1)	780-1 458 (500-1)	780-1½ 458 (500-1½)	880-2 558 (600-2)
BEEVILLE MUNI ALTIMETER SETTING MINIMA				
LNAV MDA	660-1 353 (400-1)			
CIRCLING	800-1 478 (500-1)	820-1 498 (500-1)	820-1½ 498 (500-1½)	880-2 558 (600-2)



RNAV (GPS) RWY 35

SC-3, 16 APR 2026 to 14 MAY 2026

SC-3, 16 APR 2026 to 14 MAY 2026