

TONOPAHA, NEVADA

RNAV (GPS) RWY 32

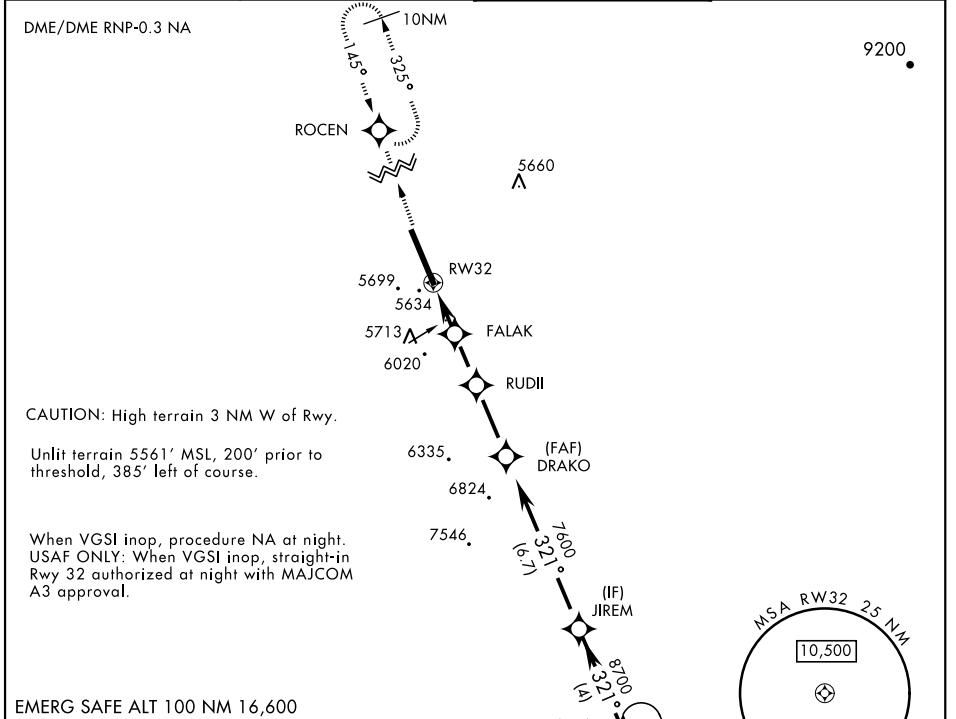
APCH CRS	Rwy ldg	12,001
321°	TDZE	5550
	Arpt Elev	5550

AL-3188 [USAF]

TONOPAHA TEST RANGE (KTNX)

<p>▼ * When ALS inop, increase CAT CD vis to 1½ miles. ** Circling not authorized W of Rwy 14-32.</p>	<p>ALSF-1</p>	<p>MISSED APPROACH: Climb to 11,000 direct ROCEN and hold, continue climb-in-hold to 11,000.</p>

<p>AWOS</p> <p>113.0</p>	<p>NELLIS CONTROL</p> <p>119.35 254.4</p>	<p>SILVERBOW TOWER *</p> <p>124.75 257.95</p>	<p>GND CON</p> <p>127.25 335.5</p>
---------------------------------	--	--	---

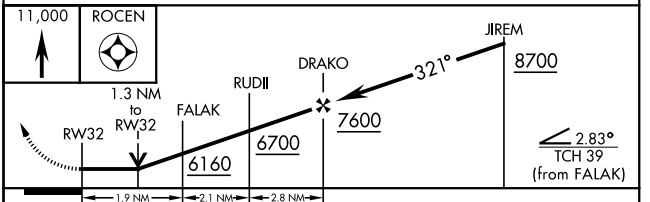
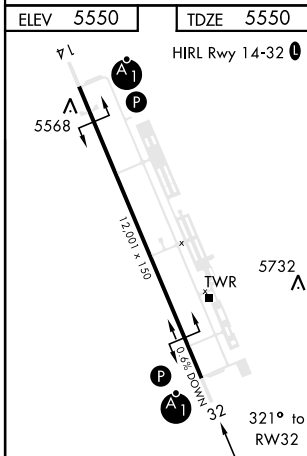


CAUTION: High terrain 3 NM W of Rwy.

Unlit terrain 5561' MSL, 200' prior to threshold, 385' left of course.

When VGSI inop, procedure NA at night.
USAF ONLY: When VGSI inop, straight-in Rwy 32 authorized at night with MAJCOM A3 approval.

EMERG SAFE ALT 100 NM 16,600



CATEGORY	A	B	C	D
LNAV MDA *	5980/24 430 (500-½)	5980/40 430 (500-¾)		
CIRCLING **	6040-1 490 (500-1)	6040-1½ 490 (500-½)	6100-2 550 (600-2)	

TONOPAHA, NEVADA
Amdt 3 29MAR18

37°47'N-116°47'W

TONOPAHA TEST RANGE (KTNX)

RNAV (GPS) RWY 32

SW-4, 16 APR 2026 to 14 MAY 2026

SW-4, 16 APR 2026 to 14 MAY 2026