

VOR/DME or TACAN RWY 32

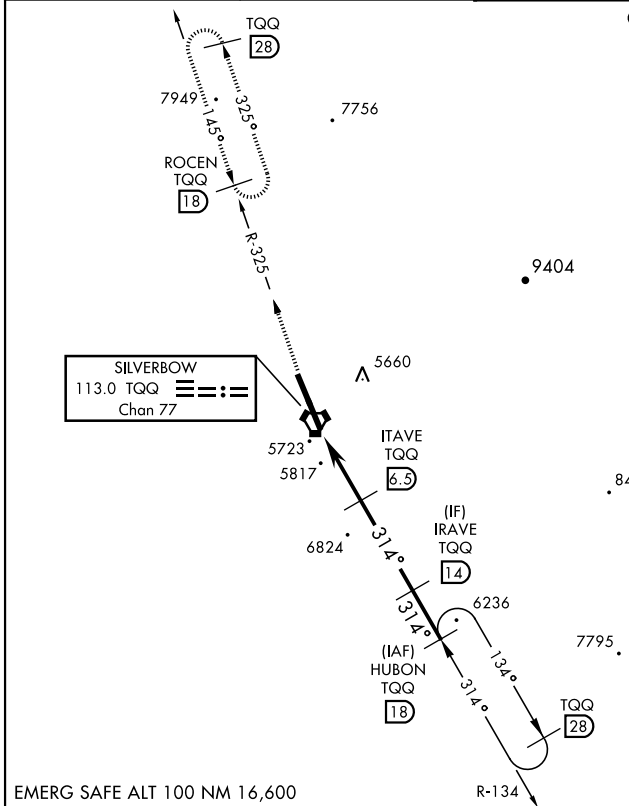
VORTAC TQQ 113.0 Chan 77	APCH CRS 314°	Rwy ldg 12,001 THRE 5550 Arprt Elev 5550
--	-------------------------	---

AL-3188 [USAF]

TONOPAH TEST RANGE (KTNX)

<p>▼ * When ALS inop, increase CAT CDE vis to 1½ miles. ** Circling not authorized W of Rwy 14-32</p>	<p>ALSF-1</p> 	<p>MISSED APPROACH: Climb to 11,000 via TQQ VORTAC R-325 to ROCEN and hold, continue climb in hold to 11,000.</p>
--	---	---

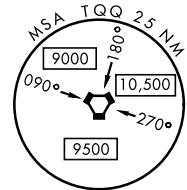
AWOS 113.0	NELLIS CONTROL 119.35 254.4	SILVERBOW TOWER* 124.75 257.95	GND CON 127.25 335.5
----------------------	---------------------------------------	--	--------------------------------



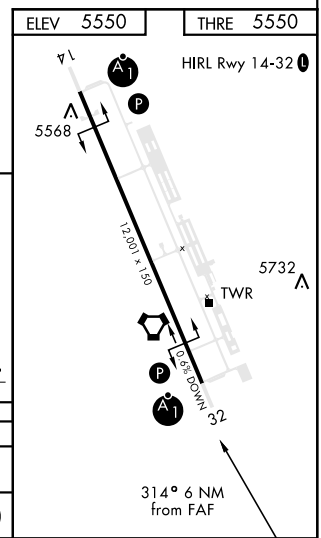
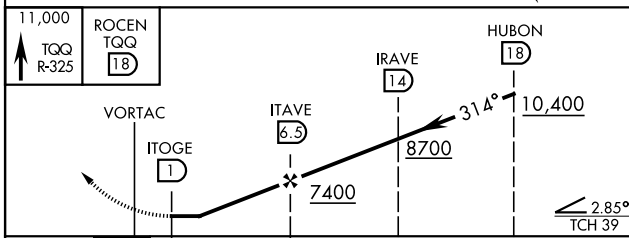
CAUTION: High terrain 3 NM W of Rwy. Unlit terrain 5561' MSL, 200' prior to threshold, 385' left of course.

When VGSI inop, procedure NA at night. USAF ONLY: When VGSI inop, straight-in Rwy 32 authorized at night with MAJCOM A3 approval.

SILVERBOW
113.0 TQQ
Chan 77



EMERG SAFE ALT 100 NM 16,600



CATEGORY	A	B	C	D	E
S-32 *	6080-1		530	(600-1)	
CIRCLING **	6080-1	530 (600-1)	6080-1½ 530 (600-1½)	6100-2	550 (600-2)

VOR/DME or TACAN RWY 32

SW-4, 16 APR 2026 to 14 MAY 2026

SW-4, 16 APR 2026 to 14 MAY 2026