

VOR/DME Z RWY 14

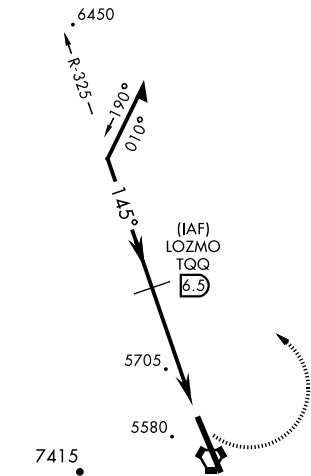
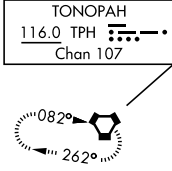
VORTAC TQO 113.0 Chan 77	APCH CRS 145°	Rwy Idg THRE 5473 Arprt Elev 5550
--	-------------------------	---

AL-3188 [USAF]

TONOPAH TEST RANGE (KTNX)

<p>V * Circling not authorized W of Rwy 14-32.</p>	<p>ALSIF-1</p>	<p>MISSED APPROACH: Turn left, climb to 11,000 direct to TPH VORTAC and hold. Continue climb in holding to 11,000.</p>
---	----------------	--

<p>AWOS 113.0</p>	<p>NELLIS CONTROL 119.35 254.4</p>	<p>SILVERBOW TOWER* 124.75 257.95 0</p>	<p>GND CON 127.25 335.5</p>
------------------------------	---	---	--

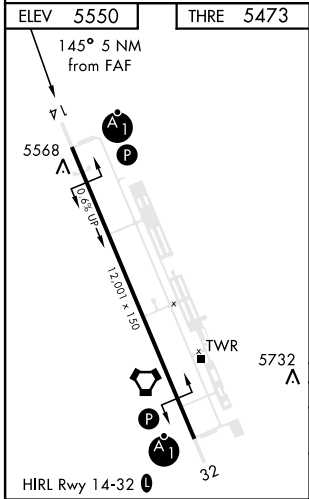
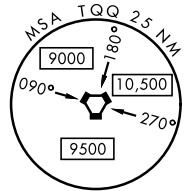


When VGSI inop, procedure NA at night.

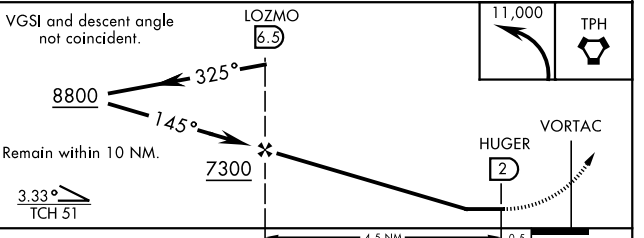
USAF ONLY: When Rwy 14 VGSI inop, straight-in Rwy 14 authorized at night with MAJCOM A3 approval.

CAUTION: When Rwy 32 VGSI inop, circling to Rwy 32 NA at night.

CAUTION: High terrain 3 NM W of Rwy. Unlit terrain 5558' MSL, 200' prior to Rwy 32 threshold, 200' left of centerline.



EMERG SAFE ALT 100 NM 16,600 FROM TQO



CATEGORY	A	B	C	D	E
S-14	5960/24	487 (500-1/2)	5960/50 487 (500-1)	NOT AUTHORIZED	
C CIRCLING*	6040-1	490 (500-1)	6040-1 1/2 490 (500-1 1/2)	NOT AUTHORIZED	

VOR/DME Z RWY 14

SW-4, 16 APR 2026 to 14 MAY 2026

SW-4, 16 APR 2026 to 14 MAY 2026