

RNAV (GPS) RWY 23

APCH CRS	Rwy Idg	5018
230°	TDZE	34
	Arpt Elev	41

[USA]

CAMP PEARY LNDG STRIP (KW94)

RNP APCH - GPS

Available Type Unknown

MISSED APPROACH: Climb to 2000 direct GAGVE and hold.

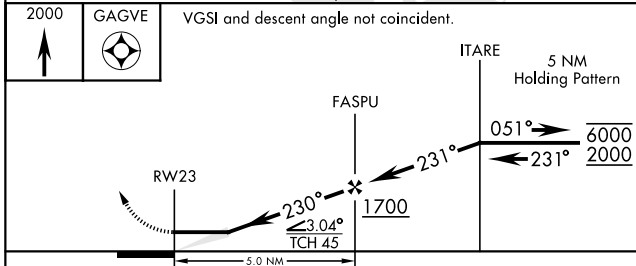
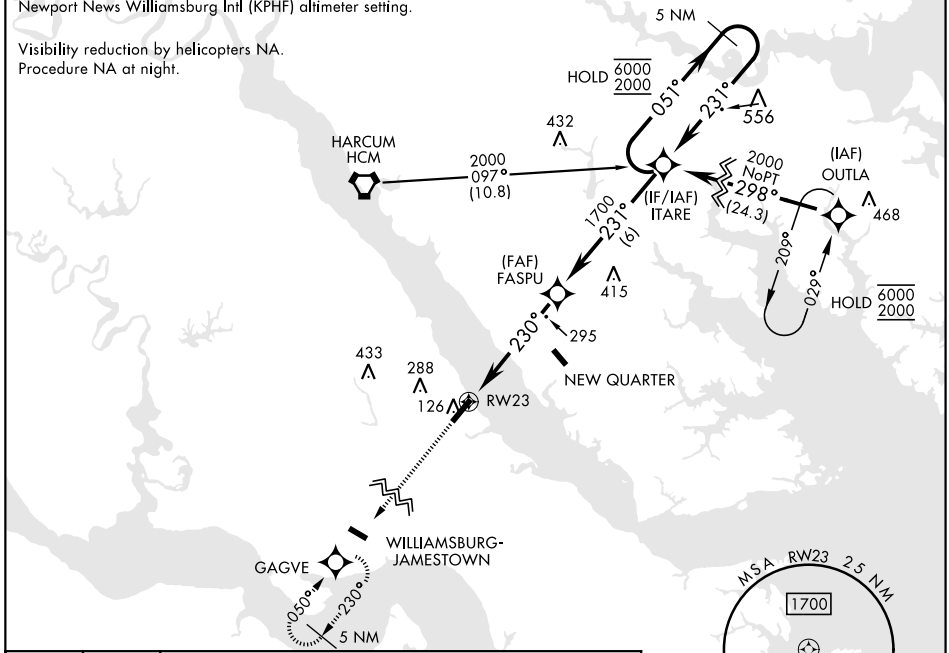
Restricted airfield, PPR. Contact Camp Peary Ops prior to landing. Williamsburg Jamestown (KJGG) Primary altimeter setting.

WILLIAMSBURG-JAMESTOWN AWOS-3
120.625

NORFOLK APP CON
125.7 335.625

When primary altimeter setting (KJGG) not received, use Newport News Williamsburg Intl (KPHF) altimeter setting.

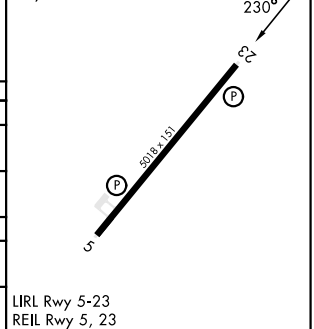
Visibility reduction by helicopters NA.
Procedure NA at night.



ELEV	41	TDZE	34
------	----	------	----

Rwy 05-23 Lead-In SFL.

CATEGORY	A	B	C	D
RNAV MDA	560-1	526 (600-1)	560-1½	526 (600-1½)
CIRCLING	560-1 519 (600-1)	600-1 559 (600-1)	600-1½ 559 (600-1½)	740-2¼ 699 (700-2¼)
NEWPORT NEWS / WILLIAMSBURG INTL ALTIMETER SETTING MINIMUMS				
RNAV MDA	600-1	556 (600-1)	600-1½	566 (600-1½)
CIRCLING	600-1 559 (600-1)	640-1 559 (600-1)	600-1½ 559 (600-1½)	780-2¼ 739 (800-2¼)



RNAV (GPS) RWY 23