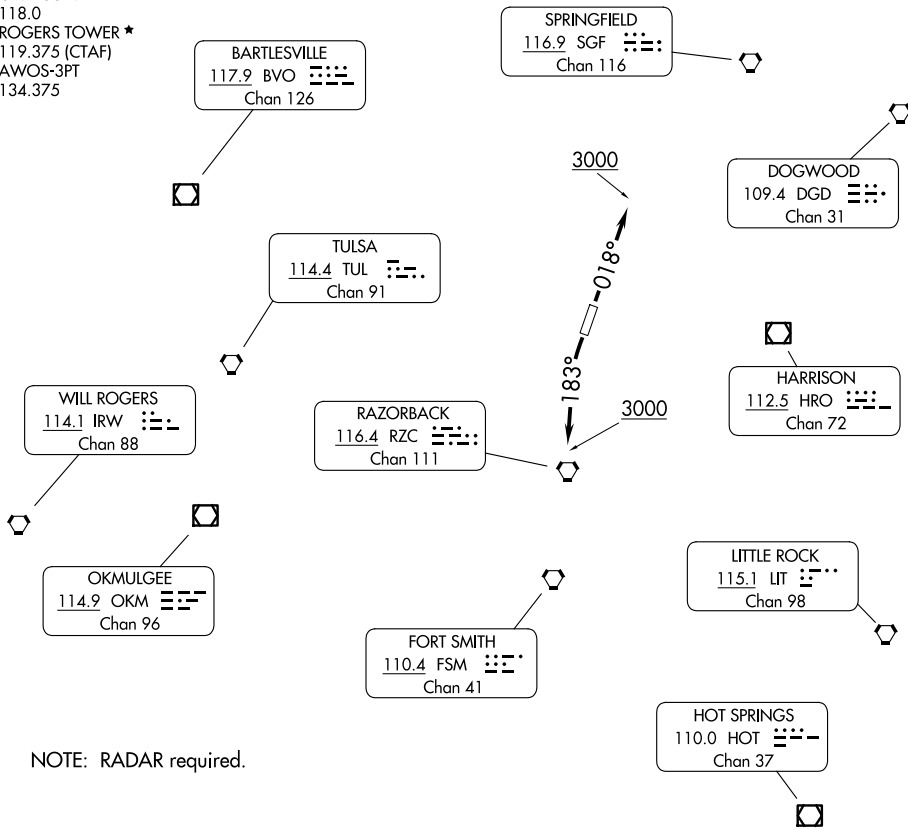


RAZORBACK DEP CON ★  
 126.6 305.2  
 CLNC DEL  
 121.75  
 CLNC DEL (When twr closed)  
 121.75  
 GND CON  
 118.0  
 ROGERS TOWER ★  
 119.375 (CTAF)  
 AWOS-3PT  
 134.375

TAKEOFF MINIMUMS

Rwys 2, 20: Standard.

TOP ALTITUDE:  
3000



NOTE: RADAR required.

NOTE: Chart not to scale.

DEPARTURE ROUTE DESCRIPTION

TAKEOFF RUNWAY 2: Climb on heading 018° to 3000, thence . . . .

TAKEOFF RUNWAY 20: Climbing left turn to 3000 on heading 183°, thence . . . .

. . . . expect RADAR vectors to assigned route. Expect clearance to requested altitude ten minutes after departure.

LOST COMMUNICATIONS: If communications are not established within 2 minutes after departure climb and maintain 5000 feet and proceed direct RZC VORTAC, then proceed on course.

SC-1, 16 APR 2026 to 14 MAY 2026

SC-1, 16 APR 2026 to 14 MAY 2026