

WAAS CH 58239 W04A	APP CRS 051°	Rwy Idg TDZE Apt Elev	5001 693 720
--	------------------------	-----------------------------	---

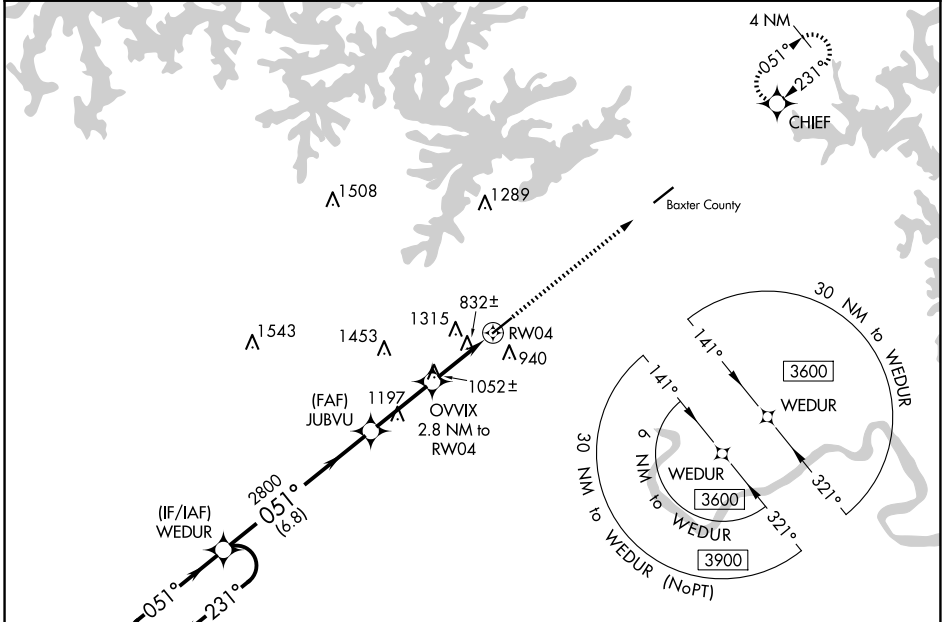
RNAV (GPS) RWY 4

MARION COUNTY RGNL (FLP)

▼ DME/DME RNP-0.3 NA. Procedure NA at night.
▲ Rwy 4 helicopter visibility reduction below 1 SM NA.
 Circling NA northwest of Rwy 4-22.

MISSED APPROACH: Climb to 3400 direct CHIEF and hold.

AWOS-3PT 132.075	MEMPHIS CENTER 126.85 281.55	UNICOM 123.0 (CTAF)
----------------------------	--	-------------------------------



4 NM Holding Pattern		WEDUR		3400		CHIEF	
3600		2800		1740		RWY 4	
← 231°		051°		3.50°		2.8 NM to RWY 4	
051° →		← 6.8 NM		← 2.8 NM		← 2.8 NM	
CATEGORY	A	B	C	D			
LP MDA	1100-1	407 (400-1)	1100-1 $\frac{3}{8}$ 407 (400-1 $\frac{3}{8}$)	NA			
LNAV MDA	1500-1 807 (800-1)	1500-1 $\frac{1}{4}$ 807 (800-1 $\frac{1}{4}$)	1500-2 $\frac{1}{2}$ 807 (800-2 $\frac{1}{2}$)	NA			
C CIRCLING	1500-1 780 (800-1)	1500-1 $\frac{1}{4}$ 780 (800-1 $\frac{1}{4}$)	1500-2 $\frac{1}{2}$ 780 (800-2 $\frac{1}{2}$)	NA			

ELEV 720	TDZE 693
----------	----------

SC-1, 16 APR 2026 to 14 MAY 2026

SC-1, 16 APR 2026 to 14 MAY 2026