

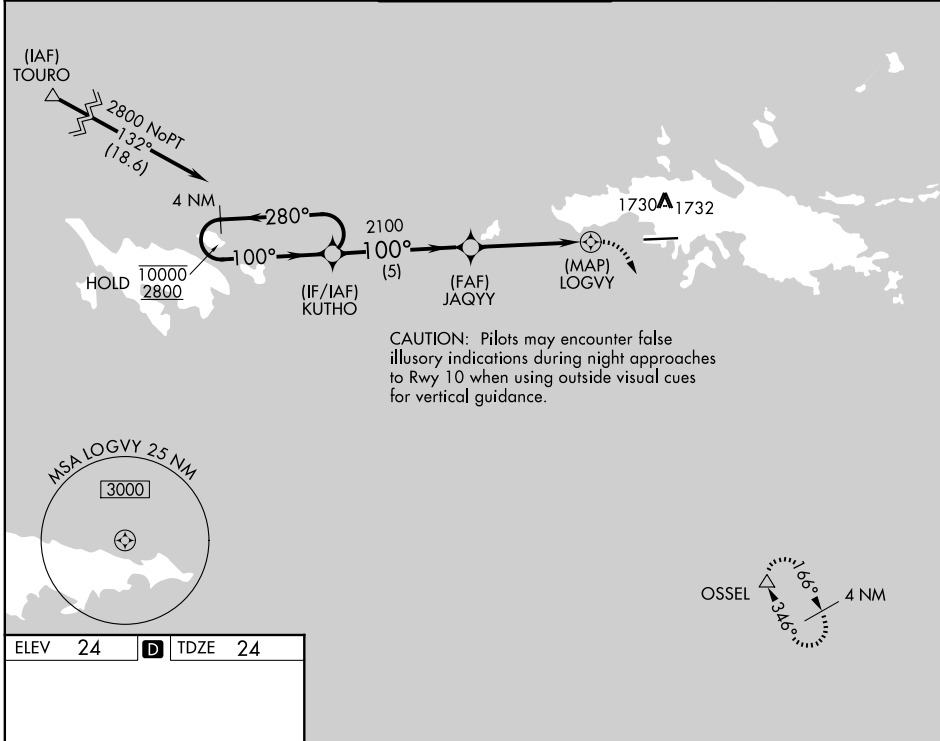
APP CRS 100°	Rwy Ldg 6892 TDZE 24 Apt Elev 24
------------------------	---

RNAV (GPS) RWY 10

CYRIL E KING (STT)(TIST)

RNP APCH - GPS.	MISSED APPROACH: Climbing right turn to 2800 direct OSSEL and hold. * Missed approach requires minimum climb of 411 feet per NM to 1900 for Category C/D aircraft.
▽ Circling NA at night. Circling NA north of Rwy 10-28. ▲ Cat A and B missed approach climb gradient is standard.	

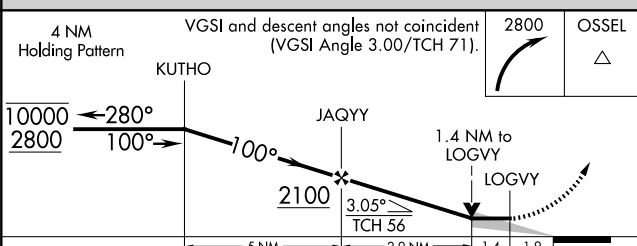
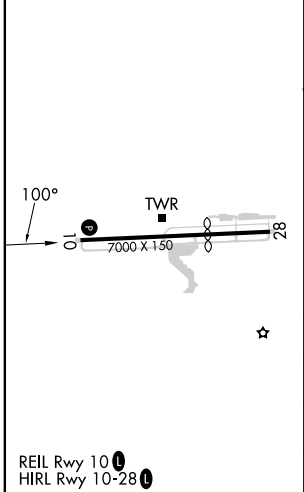
ATIS 124.0	SAN JUAN CENTER 128.65 279.6	ST. THOMAS TOWER ★ 118.8 (CTAF) 0 257.6 118.1 (NORTH OF ISLAND)	GND CON 121.9	UNICOM 122.95
----------------------	--	--	-------------------------	-------------------------



SE-3, 16 APR 2026 to 14 MAY 2026

SE-3, 16 APR 2026 to 14 MAY 2026

ELEV 24	D	TDZE 24
----------------	----------	----------------



CATEGORY	A	B	C	D
LNAV MDA*	NA		1180-3	1156 (1200-3)
LNAV MDA	1180-2½	1156 (1200-2½)	1560-3	1536 (1600-3)
CIRCLING	1180-2½	1156 (1200-2½)	1560-3	1536 (1600-3)