

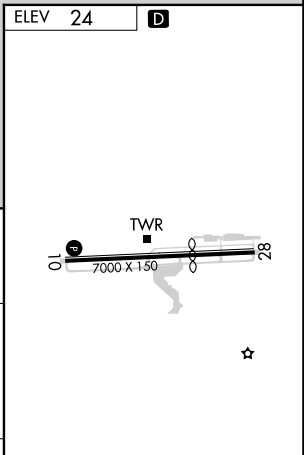
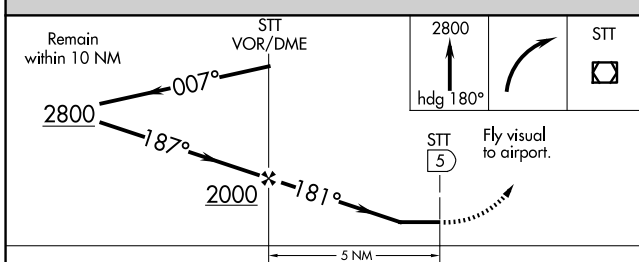
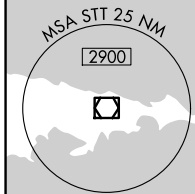
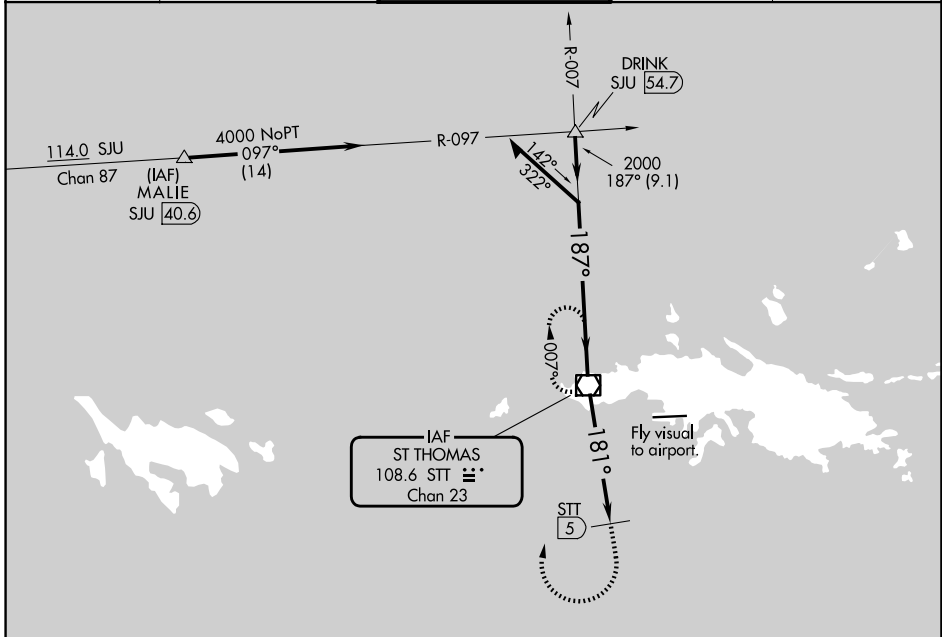
VOR/DME STT <b>108.6</b> Chan <b>23</b>	APP CRS <b>181°</b>	Rwy Ldg TDZE Apt Elev <b>N/A</b> <b>24</b>
---	------------------------	---

**VOR-A**  
CYRIL E KING (STT)(TIST)

**CAUTION:** High terrain north of Rwy 10-28 extended. Circling NA north of Rwy 10-28. Procedure NA when control tower not in operation. Procedure NA at night.

**MISSED APPROACH:** If unable to proceed visually to airport upon descent to 1160, climb to 2800 via heading 180°, then right turn direct STT VOR/DME and hold.

ATIS <b>124.0</b>	SAN JUAN CENTER <b>128.65 279.6</b>	<b>ST. THOMAS TOWER *</b> <b>118.8 (CTAF) 0 257.6</b> <b>118.1 (NORTH OF ISLAND)</b>	GND CON <b>121.9</b>	UNICOM <b>122.95</b>
----------------------	--	--	-------------------------	-------------------------



CATEGORY	A	B	C	D
CIRCLING	1160-3	1136 (1200-3)	1480-3 1456 (1500-3)	

SE-3, 16 APR 2026 to 14 MAY 2026

SE-3, 16 APR 2026 to 14 MAY 2026