

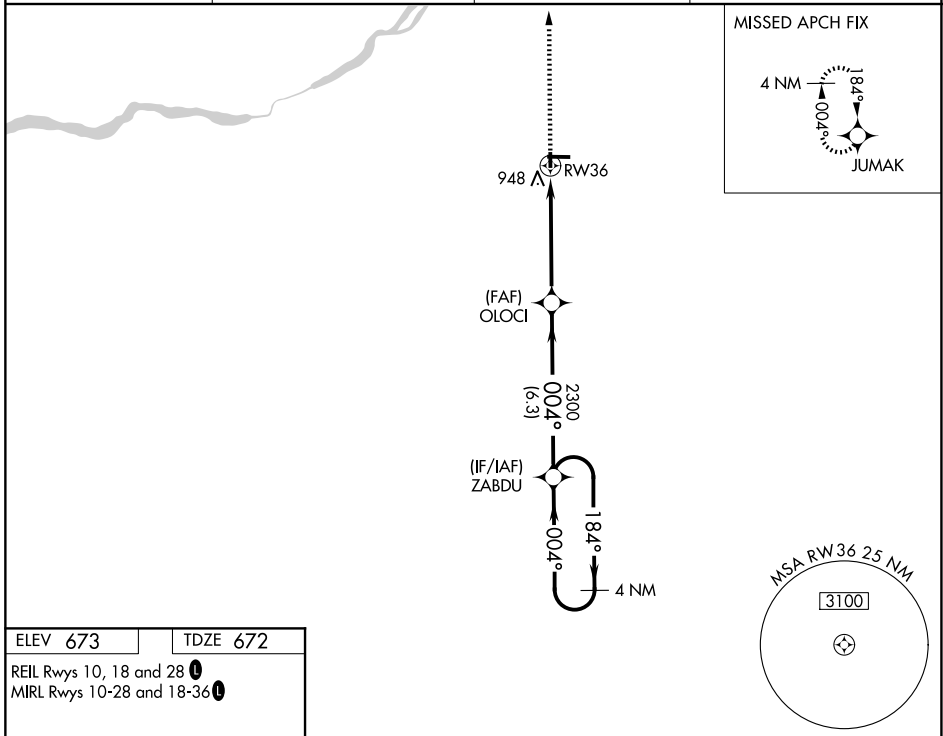
APP CRS	Rwy Ldg	<b>2560</b>
<b>004°</b>	TDZE	<b>672</b>
	Apt Elev	<b>673</b>

# RNAV (GPS) RWY 36

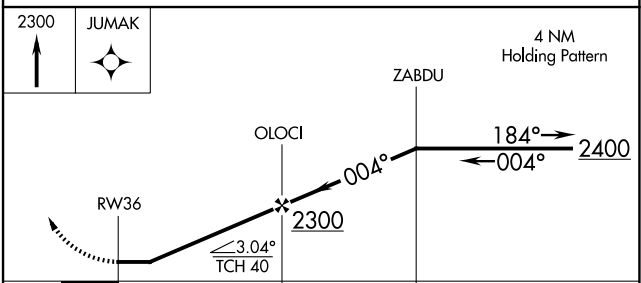
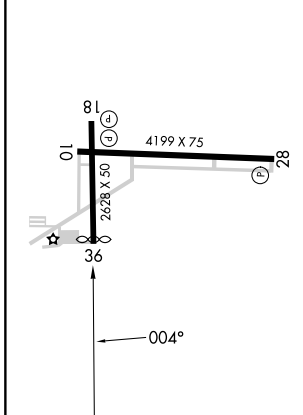
WOOD COUNTY (1G $\emptyset$ )

RNP APCH.	Rwy 36 helicopter visibility reduction below 1 SM NA. When local altimeter setting not received, use Toledo Express altimeter setting and increase all MDAs 40 feet. Straight-in and Circling Rwy 36 NA at night.	MISSED APPROACH: Climb to 2300 direct JUMAK and hold.
-----------	---	---

AWOS-3 <b>120.725</b>	TOLEDO APP CON <b>126.1 317.55</b>	CLNC DEL <b>125.6</b>	UNICOM <b>122.975 (CTAF) <math>\emptyset</math></b>
--------------------------	---------------------------------------	--------------------------	--



ELEV <b>673</b>	TDZE <b>672</b>
REIL Rwy 10, 18 and 28 $\emptyset$	
MIRL Rwy 10-28 and 18-36 $\emptyset$	



CATEGORY	A	B	C	D
LNAV MDA	1260-1	588 (600-1)	NA	
CIRCLING	1300-1	627 (700-1)	NA	

EC-2, 16 APR 2026 to 14 MAY 2026

EC-2, 16 APR 2026 to 14 MAY 2026