

ILS or LOC RWY 18

LOC I-AVA 111.3	APCH CRS 177°	Rwy ldg 12,351 TDZE 900 Arprt Elev 911
---------------------------	-------------------------	--

[USAF]

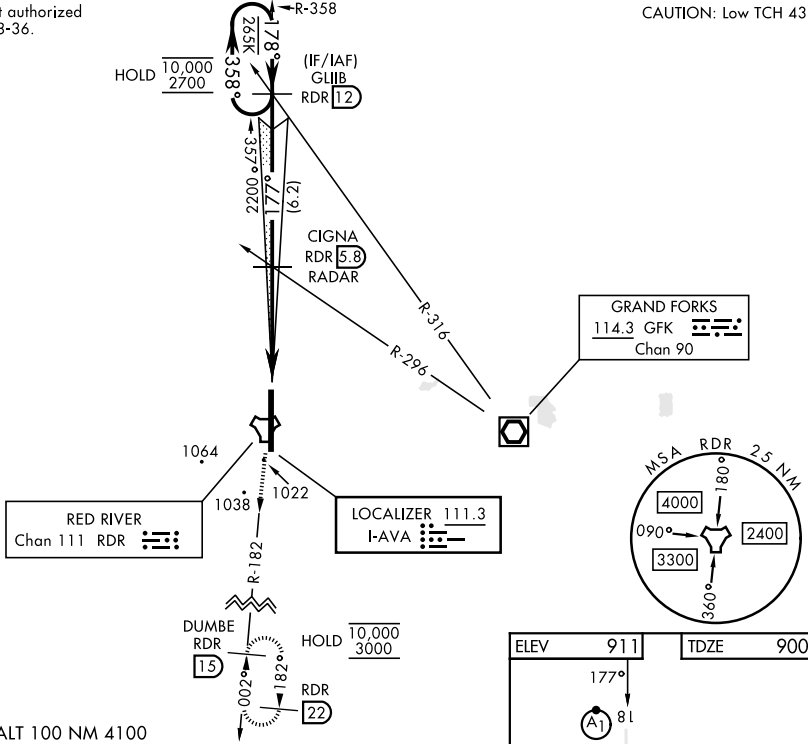
GRAND FORKS AFB (KRDR)

RADAR or DME required		ALSIF-1 	MISSED APPROACH: Climb to 3000 on RDR TACAN R-182 to DUMBE and hold.
-----------------------	--	-------------	--

* When ALS inop, increase RVR to 40 and vis to 3/4 mile.
** When ALS inop, increase CAT AB RVR to 55 and vis to 1 mile; CAT CDE vis to 1 1/4 miles.

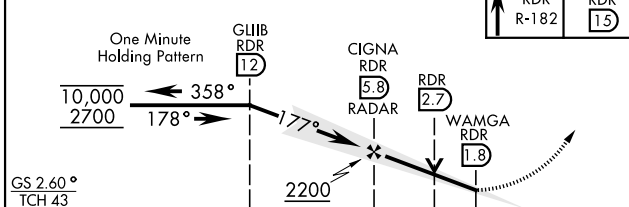
ATIS 273.45	APP CON * 118.1 318.1	RED RIVER TOWER * 124.9 349.0	GND CON 119.15 275.8	CLNC DEL 119.15 360.7
-----------------------	---------------------------------	---	--------------------------------	---------------------------------

*** Circling not authorized E of Rwy 18-36. CAUTION: Low TCH 43



1339
EMERG SAFE ALT 100 NM 4100

VGSI and ILS glidepath not coincident (VGSI Angle 2.60/TCH 48).



ELEV 911	TDZE 900
----------	----------

Vertical profile details:

- 177° heading, 81' distance, A1 marker.
- 12,351 x 1.50 distance.
- 36' distance, A1 marker.
- HIRL Rwy 18-36.
- FAF to MAP 4.1 NM.
- Speed table:

Knots	60	90	120	150	180
Min:Sec	4:06	2:44	2:03	1:38	1:22

CATEGORY	A	B	C	D	E
S-ILS 18*	1100/24		200	(200-1/2)	
S-LOC 18**	1340/24	440 (500-1/2)	1340/40	440	(500-3/4)
CIRCLING***	1340-1 429 (500-1)	1380-1 469 (500-1)	1380-1 1/2 469 (500-1 1/2)	1540-2 629 (700-2)	1560-2 1/4 649 (700-2 1/4)

ILS or LOC RWY 18

NC-1, 16 APR 2026 to 14 MAY 2026

NC-1, 16 APR 2026 to 14 MAY 2026