

GRAND FORKS, NORTH DAKOTA

# TACAN RWY 18

TACAN RDR Chan 111	APCH CRS 182°	Rwy Idg TDZE Arprt Elev	12,351 900 911
-----------------------	------------------	-------------------------------	----------------------

(USAF)

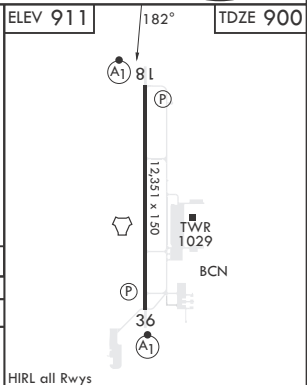
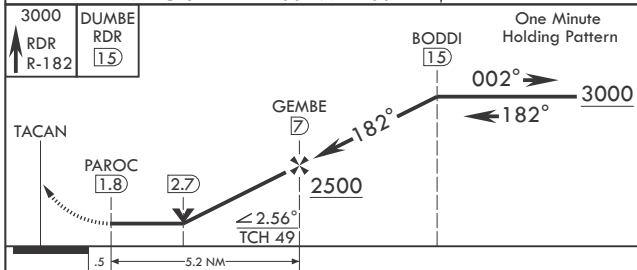
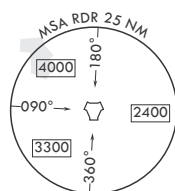
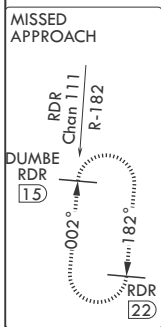
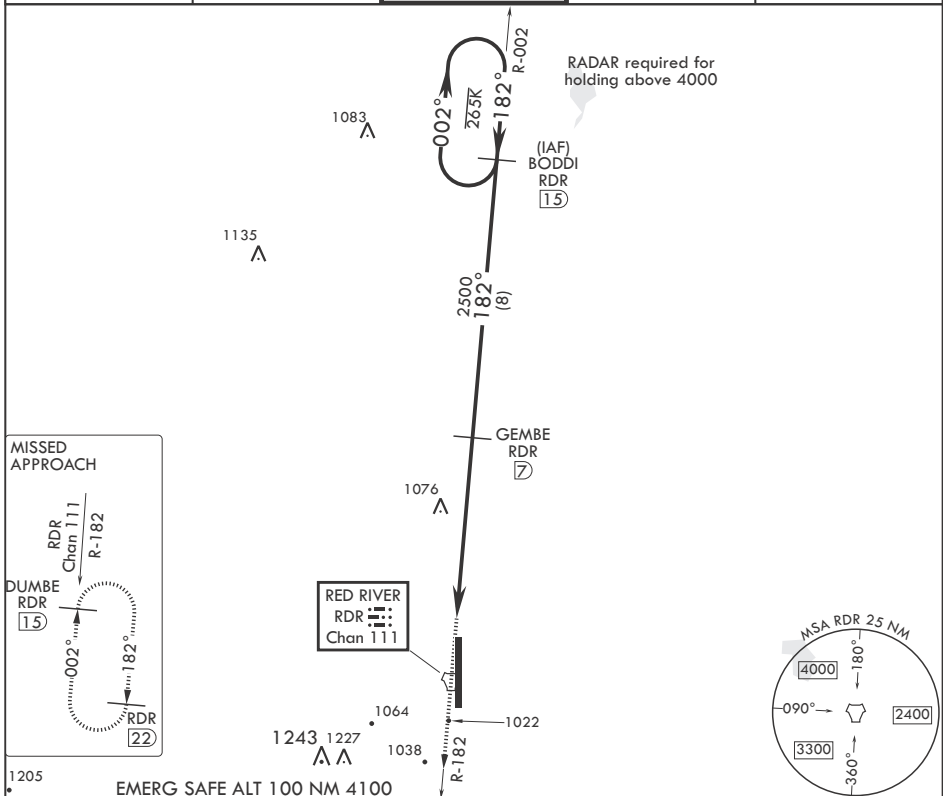
GRAND FORKS AFB (KRDR)

\* When ALS inop, increase CAT AB RVR to 55, vis to 1 mile; CAT CDE vis to 1 1/4 miles.  
\*\* Circling E of Rwy 18-36 not authorized.

ALSF-1

MISSED APPROACH: Climb to 3000 on RDR TACAN R-182 to DUMBE and hold.

ATIS 273.45	APP CON* 118.1 318.1	RED RIVER TOWER* 124.9 349.0	GND CON 119.15 275.8	CLNC DEL 119.15 360.7
----------------	-------------------------	---------------------------------	-------------------------	--------------------------



CATEGORY	A	B	C	D	E
S-18*	1340/24	440 (500-1/2)	1340/40	440	(500-3/4)
CIRCLING**	1340-1 429 (500-1)	1380-1 469 (500-1)	1380-1 1/2 469 (500-1 1/2)	1540-2 629 (700-2)	1560-2 1/4 649 (700-2 1/4)

GRAND FORKS, NORTH DAKOTA

47°58'N - 97°24'W

GRAND FORKS AFB (KRDR)

Orig 10AUG23

# TACAN RWY 18

NC-1, 16 APR 2026 to 14 MAY 2026

NC-1, 16 APR 2026 to 14 MAY 2026