

GRAND FORKS, NORTH DAKOTA

TACAN RWY 36

TACAN RDR Chan 111	APCH CRS 351°	Rwy Idg 12,351	TDZE 911
		Arprt Elev 911	

(USAF)

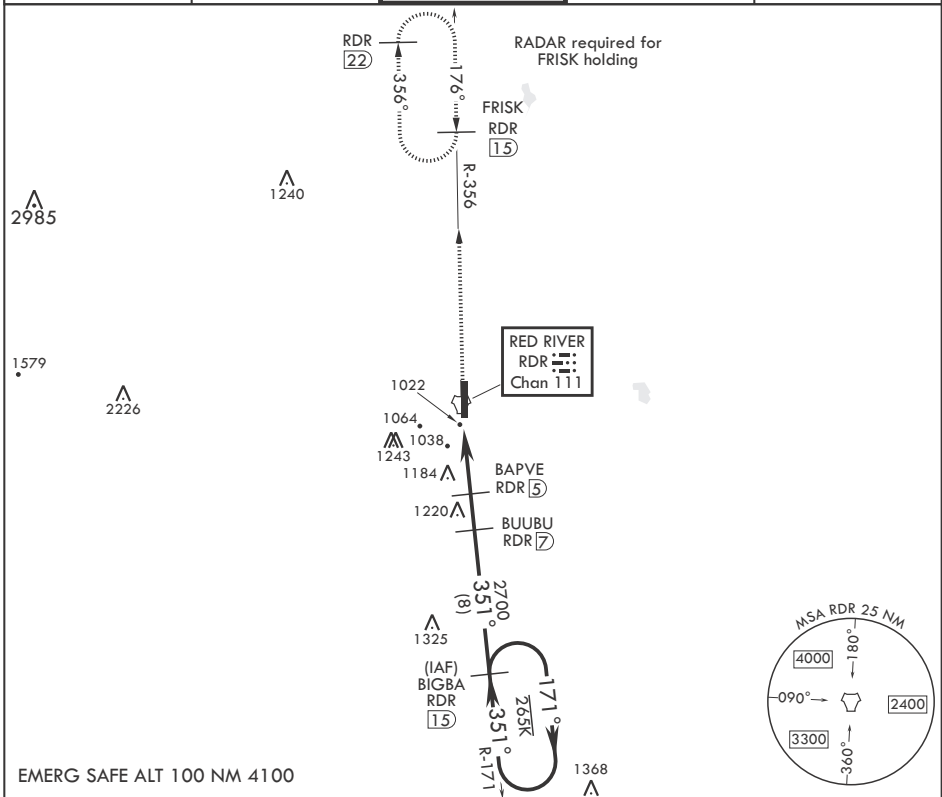
GRAND FORKS AFB (KRDR)

* When ALS inop, increase CAT AB RVR to 55, vis to 1 mile, CAT CDE vis to 1 1/2 miles.
 ** Circling E of Rwy 18-36 not authorized.

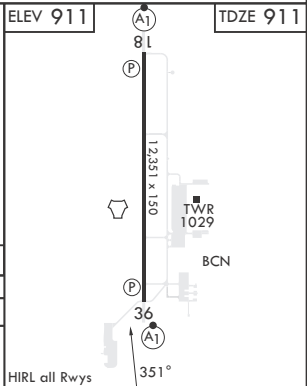
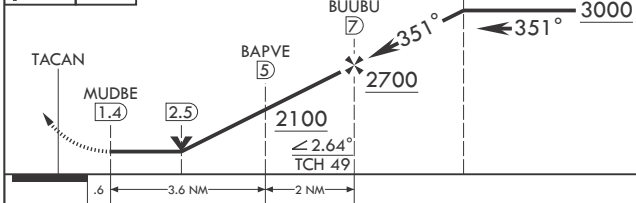
ALSF-1

MISSED APPROACH: Climb to 3000 on RDR TACAN R-356 to FRISK and hold.

ATIS 273.45	APP CON* 118.1 318.1	RED RIVER TOWER* 124.9 349.0	GND CON 119.15 275.8	CLNC DEL 119.15 360.7
----------------	-------------------------	---------------------------------	-------------------------	--------------------------



3000 RDR R-356	FRISK RDR 15	BIGBA 15	One Minute Holding Pattern	ELEV 911	TDZE 911
----------------	--------------	----------	----------------------------	----------	----------



CATEGORY	A	B	C	D	E
S-36*	1440/24 529 (600-1/2)		1440/55 529 (600-1)		
CIRCLING**	1440-1 529 (600-1)		1440-1 1/2 529 (600-1 1/2)	1540-2 629 (700-2)	1560-2 1/4 649 (700-2 1/4)

GRAND FORKS, NORTH DAKOTA

47°58'N - 97°24'W

GRAND FORKS AFB (KRDR)

Orig 10AUG23

TACAN RWY 36

NC-1, 16 APR 2026 to 14 MAY 2026

NC-1, 16 APR 2026 to 14 MAY 2026