

LOC I-JNK 109.1	APP CRS 319°	Rwy Ldg 6500
		TDZE 937
		Apt Elev 937

ILS or LOC RWY 32

DELAWARE COUNTY RGNL (MIE)

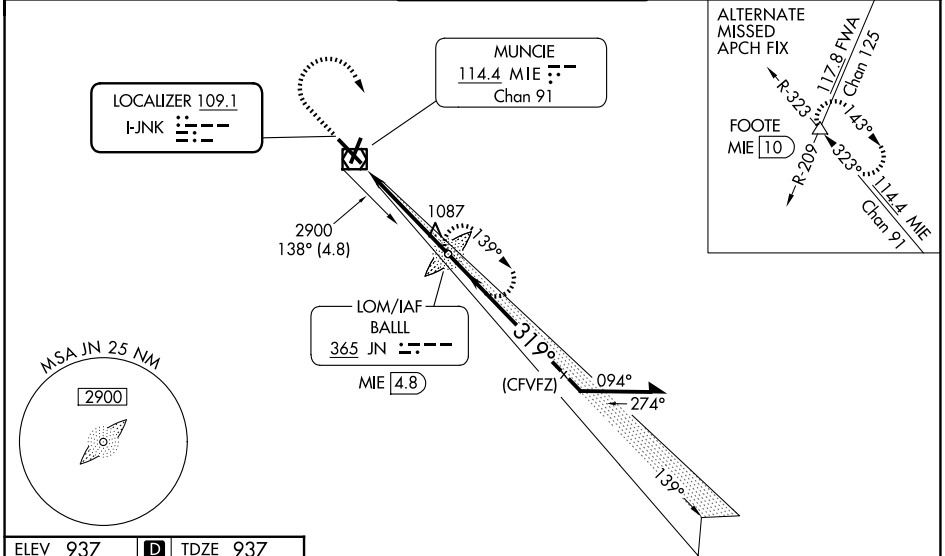
ADF or DME required.

⚠ When control tower closed, except for operators with approved weather reporting service, use FWA allimeter setting. For inop ALS, increase S-LOC 32 visibility Cats A and B to 1 SM, Cat C to 1 3/8 SM. For inop ALS when using FWA allimeter setting, increase S-ILS 32 visibility all Cats to 1 SM and increase S-LOC 32 Cats C and D to 1 3/8 SM. When local allimeter setting not received, use FWA allimeter setting and increase S-ILS 32 DA to 1258 feet; increase all MDAs 140 feet; increase S-LOC 32 visibility Cats C and D 3/8 SM and Circling visibility Cats C and D 1/2 SM. VDP NA when using FWA allimeter setting.



MISSED APPROACH: Climb to 1460 then climbing right turn to 2900 direct BALL LOM and hold.

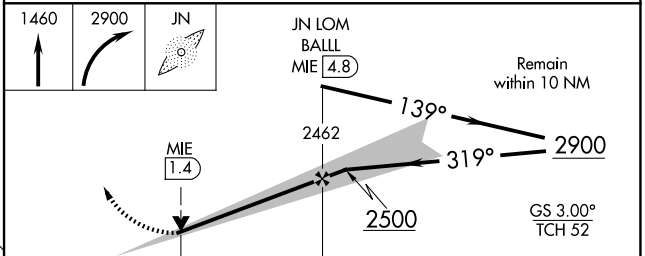
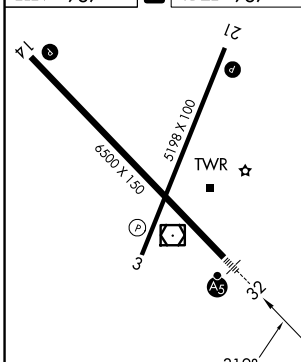
ATIS 133.25	INDIANAPOLIS APP CON 120.65 317.8	MUNCIE TOWER ★ 120.1 (CTAF) 0	GND CON 121.9	UNICOM 122.95
-----------------------	---------------------------------------------	-----------------------------------------	-------------------------	-------------------------



EC-2, 16 APR 2026 to 14 MAY 2026

EC-2, 16 APR 2026 to 14 MAY 2026

ELEV 937	D	TDZE 937
----------	----------	----------



CATEGORY	A	B	C	D
S-ILS 32		1137-1/2	200 (200-1/2)	
S-LOC 32	1380-1/2	443 (500-1/2)	1380-7/8	443 (500-7/8)
CIRCLING	1460-1	523 (600-1)	1500-1 1/2 563 (600-1 1/2)	1600-2 663 (700-2)