

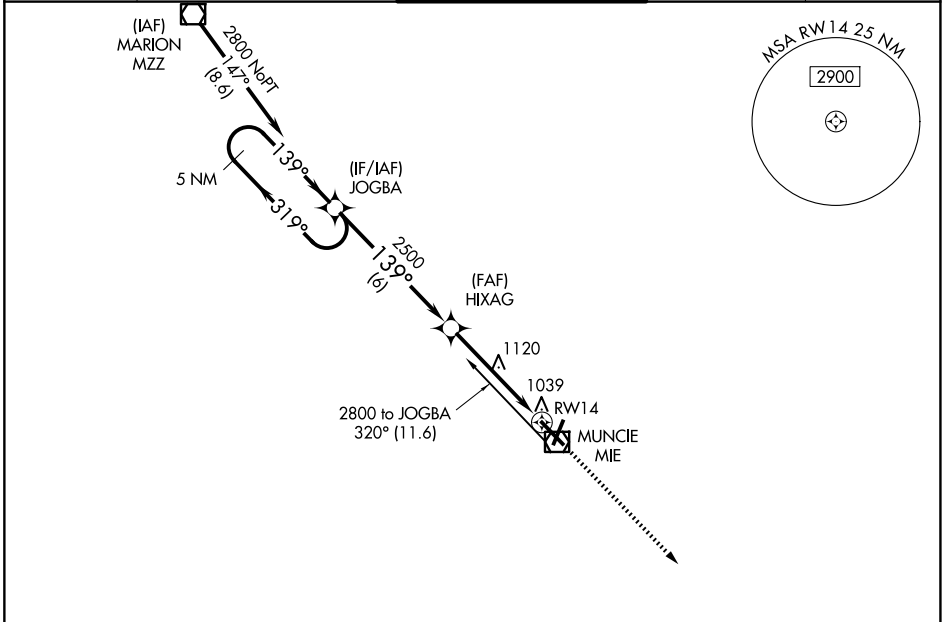
WAAS CH <b>56401</b> W <b>14A</b>	APP CRS <b>139°</b>	Rwy Ldg TDZE Apt Elev	<b>6500</b> <b>933</b> <b>937</b>
---	------------------------	-----------------------------	---

# RNAV (GPS) RWY 14

DELAWARE COUNTY RGNL (MIE)

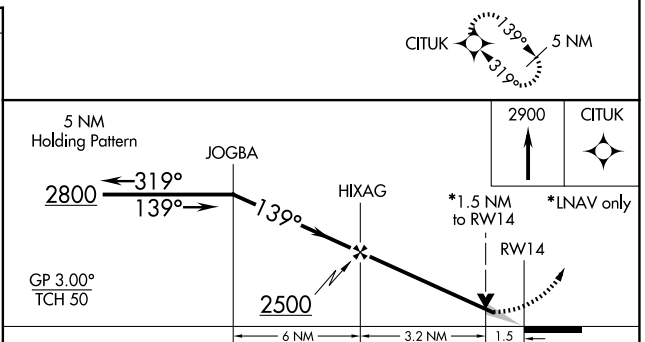
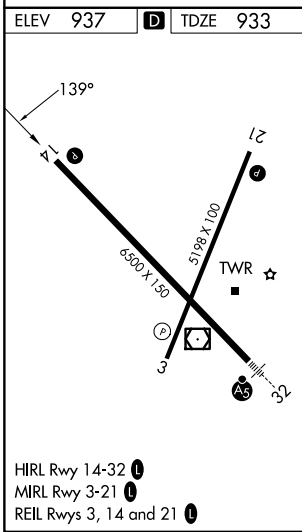
RNP APCH.	For uncompensated Baro-VNAV systems, LNAV/VNAV NA below -16°C (4°F) or above 47°C (116°F). Baro-VNAV and VDP NA when using Fort Wayne Intl altimeter setting. When local altimeter setting not received, use Fort Wayne Intl altimeter setting and increase LPV DA all Cats to 1375 and visibility 3/8 SM, LNAV/VNAV DA all Cats to 1410 and visibility 1/8 SM; increase all MDA 140 feet and LNAV Cat C 1/2 SM and Cat D 1/4 SM, Circling visibility Cat C/D 1/2 SM.	MISSED APPROACH: Climb to 2900 direct CITUK and hold.
-----------	---	--

ATIS <b>133.25</b>	INDIANAPOLIS APP CON <b>120.65 317.8</b>	MUNCIE TOWER ★ <b>120.1</b> (CTAF) <b>0</b>	GND CON <b>121.9</b>	UNICOM <b>122.95</b>
-----------------------	---	--	-------------------------	-------------------------



EC-2, 16 APR 2026 to 14 MAY 2026

EC-2, 16 APR 2026 to 14 MAY 2026



CATEGORY	A	B	C	D
LPV DA	1254-1 321 (400-1)			
LNAV/VNAV DA	1289-1¼ 356 (400-1¼)			
LNAV MDA	1420-1	487 (500-1)	1420-1¼ 487 (500-1¼)	1420-1½ 487 (500-1½)
CIRCLING	1460-1¼	523 (600-1¼)	1480-1½ 543 (600-1½)	1560-2 623 (700-2)