

WAAS CH 72601 W32A	APP CRS 319°	Rwy Ldg TDZE Apt Elev	6500 937 937
---------------------------------	------------------------	-----------------------------	---

RNAV (GPS) RWY 32

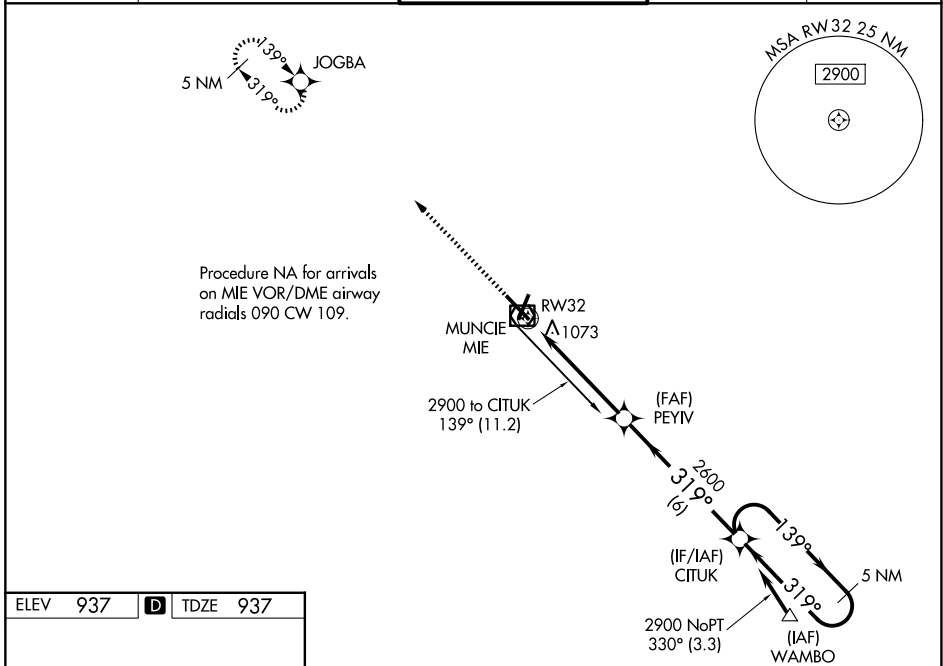
DELAWARE COUNTY RGNL (MIE)

⚠ For uncompensated Baro-VNAV systems, LNAV/VNAV NA below -16°C (4°F) or above 47°C (116°F). DME/DME RNP-0.3 NA. Baro-VNAV and VDP NA when using Fort Wayne Intl altimeter setting. For inop MALSRS when using Fort Wayne Intl altimeter setting, increase LPV all Cats visibility to 1½ mile. When local altimeter setting not received, use Fort Wayne Intl altimeter setting and increase DA 121 feet; increase LPV and LNAV/VNAV all Cats visibility by ½ mile; increase all MDA 140 feet and LNAV visibility Cats C and D to 1¼; increase Circling visibility Cats C and D by ¼ mile. For inop MALSRS, increase all LPV Cats visibility to 1 SM.

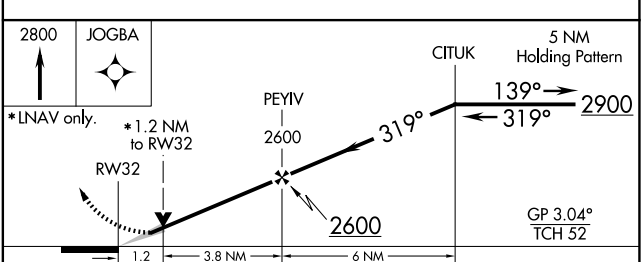
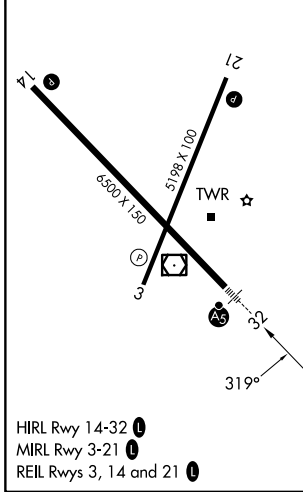
MALSRS

MISSED APPROACH:
Climb to 2800 direct JOGBA and hold.

ATIS 133.25	INDIANAPOLIS APP CON 120.65 317.8	MUNCIE TOWER ★ 120.1 (CTAF) 0	GND CON 121.9	UNICOM 122.95
-----------------------	---	---	-------------------------	-------------------------



ELEV 937	D TDZE 937
----------	-------------------



CATEGORY	A	B	C	D
LPV DA	1241-½ 304 (400-½)			
LNAV/VNAV DA	1396-1⅛ 459 (500-1⅛)			
LNAV MDA	1460-½ 523 (600-½)		1460-1 523 (600-1)	
CIRCLING	1460-1 523 (600-1)		1480-1½ 543 (600-1½)	1560-2 623 (700-2)

EC-2, 16 APR 2026 to 14 MAY 2026

EC-2, 16 APR 2026 to 14 MAY 2026