

MINOT, NORTH DAKOTA

COPTER RNAV (GPS) RWY 12

WAAS CH 71280 W12A	APCH CRS 118°	Rwy ldg 13,198
		TDZE 1666
		Arpt Elev 1666

AL-5013 (USAF)

MINOT AFB (KMIB)

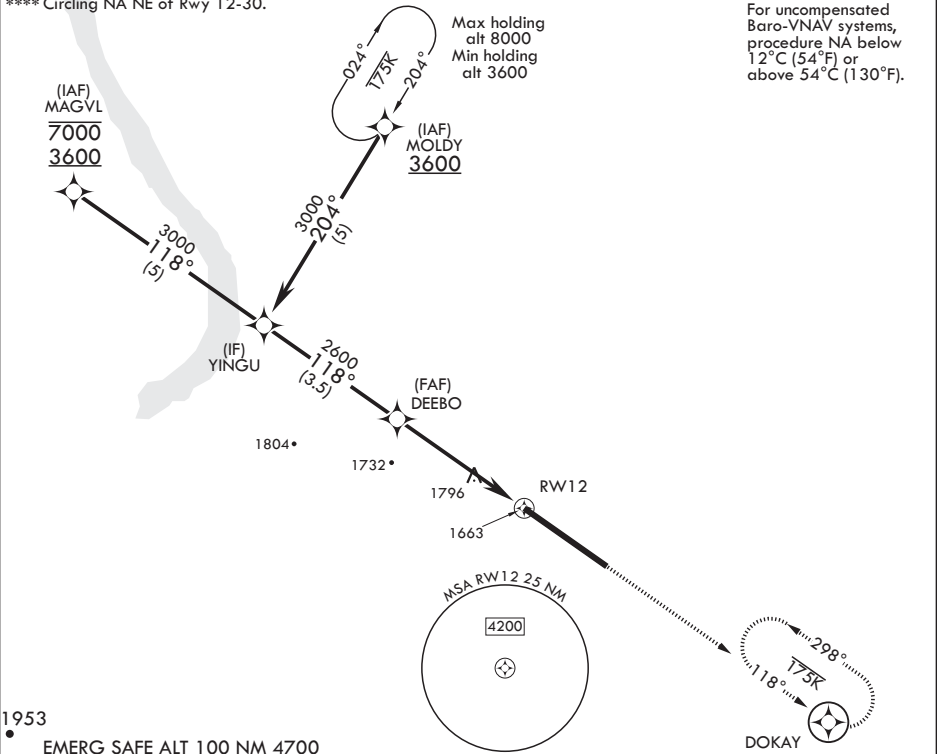
* When ALS inop, increase CAT A RVR to 40, vis to 3/4 mile.
 ** When ALS inop, increase CAT A vis to 1 5/8 miles.
 *** When ALS inop, increase CAT A RVR to 55, vis to 1 mile.



MISSED APPROACH: Climb to 3600 direct DOKAY and hold.

ATIS * 278.8	APP CON 119.6 363.8	TOWER * 120.65 253.5	GND CON 134.0 275.8	CLNC DEL 326.2
-----------------	------------------------	-------------------------	------------------------	-------------------

**** Circling NA NE of Rwy 12-30.

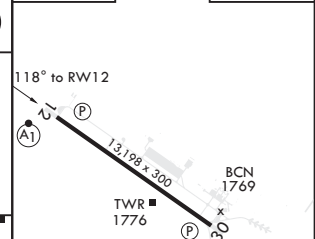
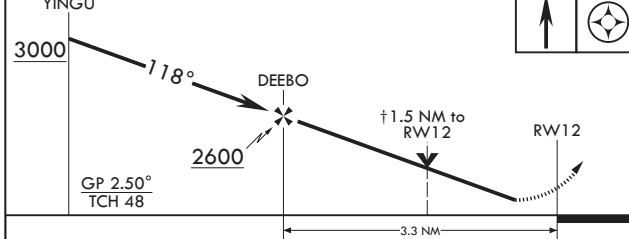


For uncompensated Baro-VNAV systems, procedure NA below 12°C (54°F) or above 54°C (130°F).

NC-1, 16 APR 2026 to 14 MAY 2026

NC-1, 16 APR 2026 to 14 MAY 2026

YINGU	↑ LNAV only	3600	DOKAY	ELEV 1666	TDZE 1666
-------	-------------	------	-------	-----------	-----------



CATEGORY	COPTER		
LPV DA*	1866/24	200	(200-1/4)
LNAV/VNAV DA**	2077/60	411	(500-1 1/2)
LNAV MDA***	2100/24	434	(500-1/2)
C CIRCLING****	2120-1	454	(500-1)

HIRL all Rws

MINOT, NORTH DAKOTA

48°25'N - 101°21'W

MINOT AFB (KMIB)

Orig 19JUL18

COPTER RNAV (GPS) RWY 12