

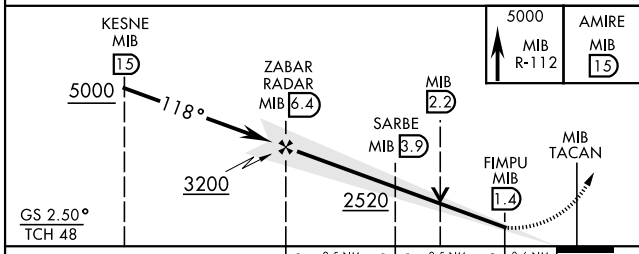
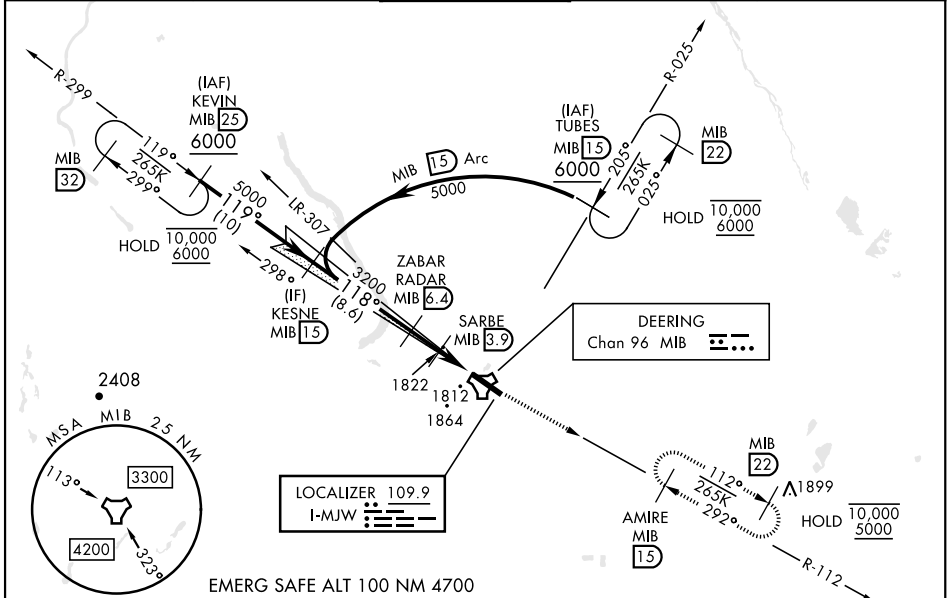
# ILS or LOC Y RWY 12

LOC I-MJW <b>109.9</b>	APCH CRS <b>118°</b>	Rwy Idg <b>13,198</b> TDZE <b>1666</b> Arprt Elev <b>1666</b>
---------------------------	-------------------------	---

[USAF]

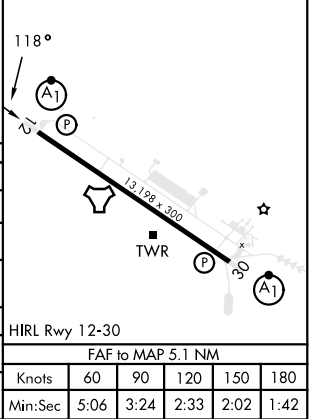
MINOT AFB (KMIB)

RADAR or DME required.				
* When ALS inop, increase RVR to 40 and vis to 3/4 mile. ** When ALS inop, increase CAT AB RVR to 55 and vis to 1 mile; CAT CDE RVR to 60, vis to 1 1/2 miles. *** When ALS inop, increase CAT AB RVR to 55, vis to 1 mile, CAT CDE vis to 1 1/2 miles. **** Circling not authorized N of Rwy 12-30.			ALSF-1 	
MISSED APPROACH: Climb to 5000 via MIB TACAN R-112 direct AMIRE and hold.				
ATIS <b>278.8</b>	MINOT APP CON <b>119.6 363.8</b>	MINOT TOWER <b>120.65 253.5</b>	GND CON <b>134.0 275.8</b>	CLNC DEL <b>326.2</b>



ELEV	1666	TDZE	1666
------	------	------	------

CATEGORY	A	B	C	D	E
S-ILS 12*	1866/24		200	(200-1/2)	
S-LOC 12**	2080/24	414 (500-1/2)	2080/40	414	(500-3/4)
CIRCLING****	2120-1	2140-1	2180-1 1/2	2320-2	2320-2 1/4
	454 (500-1)	474 (500-1)	514 (600-1 1/2)	654 (700-2)	654 (700-2 1/4)
LOCAL ALTIMETER WITHOUT LAST STEPOUND FIX					
S-LOC 12***	2200/24	534 (600-1/2)	2200/55	534	(600-1)
CIRCLING****	2200-1	534 (600-1)	2200-1 1/2	2320-2	2320-2 1/4
			534 (600-1 1/2)	654 (700-2)	654 (700-2 1/4)



# ILS or LOC Y RWY 12

NC-1, 16 APR 2026 to 14 MAY 2026

NC-1, 16 APR 2026 to 14 MAY 2026